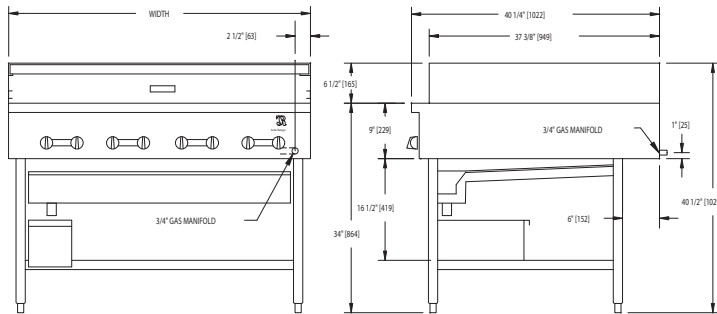




# CHICKEN BROILER HIGH PRODUCTION



JCBH-48



| MODEL    | BURNERS | WIDTH | DEPTH   | HEIGHT  | BTUS    |
|----------|---------|-------|---------|---------|---------|
| JCBH-24  | 4       | 24"   | 40-1/4" | 40-1/2" | 100,000 |
| JCBH-30  | 5       | 30"   | 40-1/4" | 40-1/2" | 125,000 |
| JCBH-36  | 6       | 36"   | 40-1/4" | 40-1/2" | 150,000 |
| JCBH-42  | 7       | 42"   | 40-1/4" | 40-1/2" | 175,000 |
| JCBH-48  | 8       | 48"   | 40-1/4" | 40-1/2" | 200,000 |
| JCBH-60* | 10      | 60"   | 40-1/4" | 40-1/2" | 250,000 |
| JCBH-72* | 12      | 72"   | 40-1/4" | 40-1/2" | 300,000 |

\* 1" regulator recommended

| MODEL NO.                        | DESCRIPTION                         |
|----------------------------------|-------------------------------------|
| <input type="checkbox"/> JCBH-24 | 24" HIGH PRODUCTION CHICKEN BROILER |
| <input type="checkbox"/> JCBH-30 | 30" HIGH PRODUCTION CHICKEN BROILER |
| <input type="checkbox"/> JCBH-36 | 36" HIGH PRODUCTION CHICKEN BROILER |
| <input type="checkbox"/> JCBH-42 | 42" HIGH PRODUCTION CHICKEN BROILER |
| <input type="checkbox"/> JCBH-48 | 48" HIGH PRODUCTION CHICKEN BROILER |
| <input type="checkbox"/> JCBH-60 | 60" HIGH PRODUCTION CHICKEN BROILER |
| <input type="checkbox"/> JCBH-72 | 72" HIGH PRODUCTION CHICKEN BROILER |

### STANDARD FEATURES

- Extra deep
- 14 gauge stainless steel all welded body construction
- Precision individual control of burners
- One burner for every 6" of broiler width
- Stainless steel superstructure (removable for cleaning) offers 4 levels of broiling and gives an additional 4" of cooking space at the rear
- High production burner output is 25,000 BTU/hr. each—actual broiling area available from 6.2 sq. ft. to 18.6 sq. ft.
- Specially designed flame control grates
- Extra large self-draining gutter, grease drawer and shelf
- 12 gauge all welded firebox construction
- 3/4" gas regulator
- Stainless steel front and sides, plate shelf
- Stainless steel legs and bottom shelf

### AVAILABLE OPTIONS

- Stainless steel drip deflector and grease drawer

### ACCESSORIES

- 6" casters, front two locking (3" diameter wheel)
- 36" flex hose with quick disconnect and restraining device
- 48" flex hose with quick disconnect and restraining device

**NOTE: SPECIFY TYPE OF GAS WHEN ORDERING.**

### UTILITY INFORMATION:

- 3/4" connection (see drawing for location)
- Required operating pressure:
  - Natural Gas 5" W.C. minimum
  - Propane Gas 10" W.C. minimum
  - 14" W.C. maximum

**Note:** This unit must be connected with the gas appliance regulator supplied.

**SPECIFY TYPE OF GAS WHEN ORDERING.**

**SPECIFY ALTITUDE WHEN ABOVE 2,000 FT.**



WWW.JADERANGE.COM

JADE RANGE, LLC., A MIDDLEBY COMPANY • 2650 Orbiter Street • Brea, CA 92821 • PHONE: 800-884-5233 FAX: 714-961-2550  
 Note: In line with their policy to continually improve products, Jade reserves the right to change materials and specifications without notice. PRINTED IN USA