



CABINET BASE FRENCH TOP RANGE

TITAN CABINET BASE FRENCH TOP RANGE



JTRH-2FHT

MODEL NO.	DESCRIPTION
<input type="checkbox"/> JTRH-1FHT	18" ONE FRENCH TOP SECTION
<input type="checkbox"/> JTRH-2FHT	36" TWO FRENCH TOP SECTIONS

STANDARD FEATURES

- Highly polished reinforced cast iron French top plates
- One 30,000 BTU/hr burner per section
- Variable size multi-point gas connection—see utility information for details
- 14 gauge all welded body construction
- Stainless steel cabinet interior and exterior
- Stainless steel gas tubing throughout
- Stainless steel front, sides, stub back and bottom
- Stainless steel 6" plate shelf
- Stainless steel adjustable 6" legs
- 3/4" gas regulator (shipped loose, must be installed for proper operation)

AVAILABLE OPTIONS

- Stainless steel high riser
- Stainless steel double high riser
- Stainless steel high shelf
- Stainless steel double high shelf
- Stainless steel tubular high shelf
- Stainless steel tubular double high shelf
- Stainless steel doors
- Common plate shelf with Item(s) Model(s) _____
- Cap and cover manifold. Left Right

ACCESSORIES

- 6" casters, front two locking (5" diameter wheel)
- 36" flex hose with quick disconnect (3/4" connection)
- 48" flex hose with quick disconnect (3/4" connection)
- 1" gas pressure regulator (specify gas type)
- 1-1/4" gas pressure regulator (specify gas type)



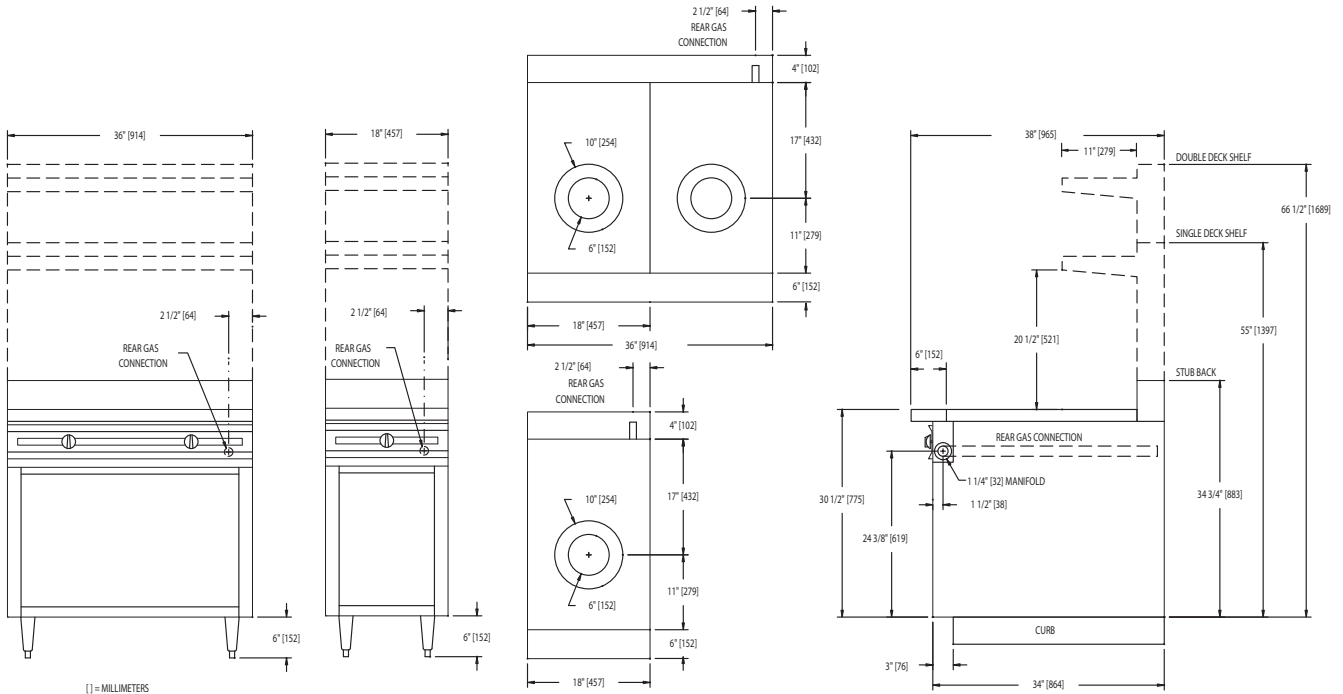
WWW.JADERANGE.COM

JADE RANGE, LLC., A MIDDLEBY COMPANY • 2650 Orbiter Street • Brea, CA 92821 • PHONE: 800-884-5233 FAX: 714-961-2550
 Note: In line with their policy to continually improve products, Jade reserves the right to change materials and specifications without notice. PRINTED IN USA





CABINET BASE FRENCH TOP RANGE



MODEL	BTUS	WIDTH	DEPTH	HEIGHT	APPX. SHP. WT.
JTRH-1FHT	30,000	18"	38"	SEE DRAWING	230 LBS.
JTRH-2FHT	60,000	36"	38"	SEE DRAWING	510 LBS.

DESCRIPTION:

Heavy duty cabinet base French top range. To be model # JTRH _____ manufactured by Jade Range. Top sections to consist of highly polished reinforced cast iron French top plates. Provide with 30,000 BTU/hr. per burner section, controlled by infinite gas valves. To have 14 gauge all welded body with stainless steel front, sides, back and bottom. All gas tubing to be stainless steel throughout. To have 6" stainless steel adjustable legs.

SPECIFY TYPE OF GAS WHEN ORDERING.

SPECIFY ALTITUDE WHEN ABOVE 2,000 ft.

UTILITY INFORMATION (GAS):

- Ranges are supplied with 1-1/4" front manifold connection and a 1" or 3/4" capped rear manifold connection. For rear manifold connection, remove cap. Ranges are supplied with 3/4" gas pressure regulator. For 1-1/4" or 1" gas pressure regulator, see accessories. (Specify required front manifold cap and cover when ordering.)
- Required operating pressure:
 Natural Gas 5" W.C. minimum
 Propane Gas 10" W.C. minimum
 14" W.C. maximum

Note: This unit must be connected with the gas appliance regulator supplied.



WWW.JADERANGE.COM

JADE RANGE, LLC., A MIDDLEBY COMPANY • 2650 Orbiter Street • Brea, CA 92821 • PHONE: 800-884-5233 FAX: 714-961-2550
 Note: In line with their policy to continually improve products, Jade reserves the right to change materials and specifications without notice. PRINTED IN USA