



CABINET BASE SPLIT TOP RANGE

TITAN CABINET BASE SPLIT TOP RANGE



JTRH-3ST

MODEL NO.	DESCRIPTION
<input type="checkbox"/> JTRH-1ST	12" ONE SPLIT TOP SECTION
<input type="checkbox"/> JTRH-2ST	24" TWO SPLIT TOP SECTIONS
<input type="checkbox"/> JTRH-3ST	36" THREE SPLIT TOP SECTIONS
<input type="checkbox"/> JTRH-4ST	48" FOUR SPLIT TOP SECTIONS
<input type="checkbox"/> JTRH-5ST	60" FIVE SPLIT TOP SECTIONS
<input type="checkbox"/> JTRH-6ST	72" SIX SPLIT TOP SECTIONS

STANDARD FEATURES

- Individual cast iron top grates with open top front and polished hot top rear
- 15,000 BTU/hr per hot top section
- 35,000 BTU/hr per open burner section
- Variable size multi-point gas connection—see utility information for details
- 14 gauge stainless steel all welded body construction
- Stainless steel gas tubing throughout
- Stainless steel front, sides, tray bed and stub back
- Stainless steel 6" plate shelf
- 3/4" gas regulator (shipped loose, must be installed for proper operation)

AVAILABLE OPTIONS

- Stainless steel high riser
- Stainless steel double high riser
- Stainless steel high shelf
- Stainless steel double high shelf
- Stainless steel tubular high shelf
- Stainless steel tubular double high shelf
- Stainless steel doors
- Common plate shelf with Item(s) Model(s) _____
- Cap and cover manifold. Left Right

ACCESSORIES

- 6" casters, front two locking (5" diameter wheel)
- 36" flex hose with quick disconnect (3/4" connection)
- 48" flex hose with quick disconnect (3/4" connection)
- 1" gas pressure regulator (specify gas type)
- 1-1/4" gas pressure regulator (specify gas type)



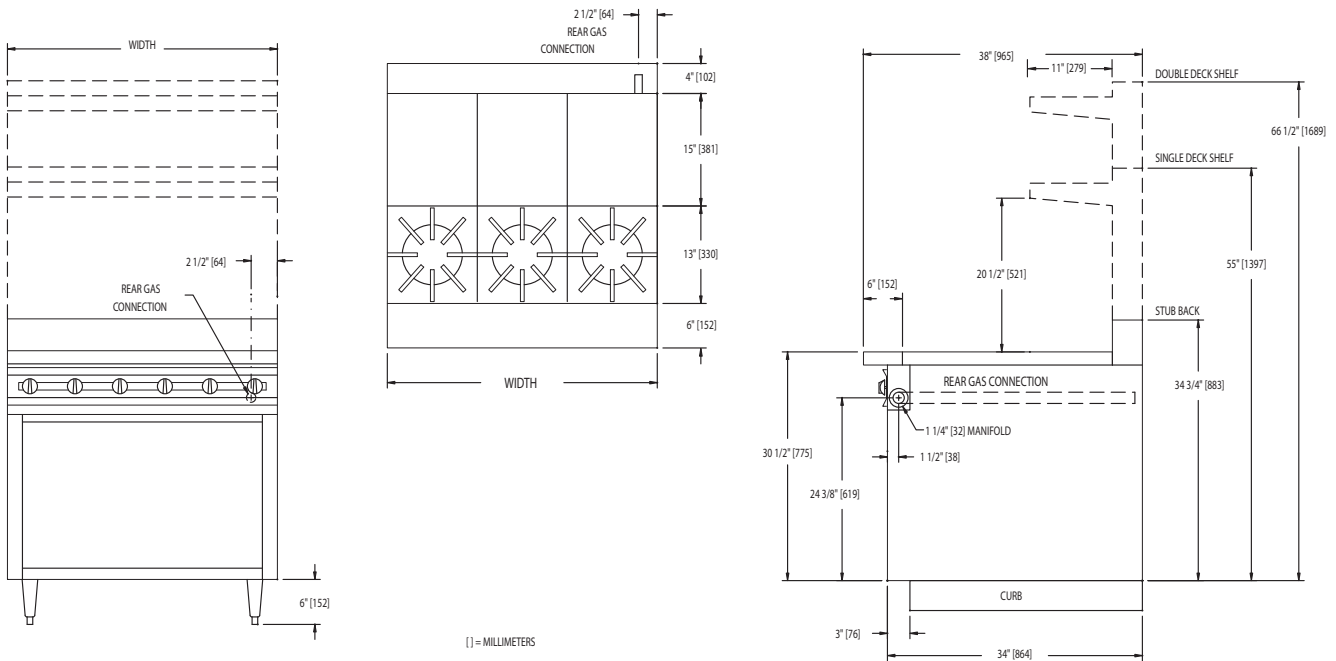
WWW.JADERANGE.COM

JADE RANGE, LLC., A MIDDLEBY COMPANY • 2650 Orbiter Street • Brea, CA 92821 • PHONE: 800-884-5233 FAX: 714-961-2550
 Note: In line with their policy to continually improve products, Jade reserves the right to change materials and specifications without notice. PRINTED IN USA





CABINET BASE SPLIT TOP RANGE



MODEL	BTUS	WIDTH	DEPTH	HEIGHT	APPX. SHP. WT.
JTRH-1ST	50,000	12"	38"	SEE DRAWING	200 LBS.
JTRH-2ST	100,000	24"	38"	SEE DRAWING	340 LBS.
JTRH-3ST	150,000	36"	38"	SEE DRAWING	485 LBS.
JTRH-4ST	200,000	48"	38"	SEE DRAWING	685 LBS.
JTRH-5ST	250,000	60"	38"	SEE DRAWING	825 LBS.
JTRH-6ST	300,000	72"	38"	SEE DRAWING	970 LBS.

DESCRIPTION:

Heavy duty cabinet base split top range. To be model # JTRH _____ manufactured by Jade Range. Top sections to consist of cast iron top grates, with open top front and polished top rear. Provide with 30,000 BTU/hr. per open burner section and 15,000 BTU/hr. per hot top section, controlled by infinite gas valves. To have 14 gauge all welded body with stainless steel front, sides, back and bottom. All gas tubing to be stainless steel throughout. To have 6" stainless steel adjustable legs.

SPECIFY TYPE OF GAS WHEN ORDERING.

SPECIFY ALTITUDE WHEN ABOVE 2,000 ft.

UTILITY INFORMATION (GAS):

- Ranges are supplied with 1-1/4" front manifold connection and a 1" or 3/4" capped rear manifold connection. For rear manifold connection, remove cap. Ranges are supplied with 3/4" gas pressure regulator. For 1-1/4" or 1" gas pressure regulator, see accessories. (Specify required front manifold cap and cover when ordering.)
- Required operating pressure:
 Natural Gas 5" W.C. minimum
 Propane Gas 10" W.C. minimum
 14" W.C. maximum

Note: This unit must be connected with the gas appliance regulator supplied.