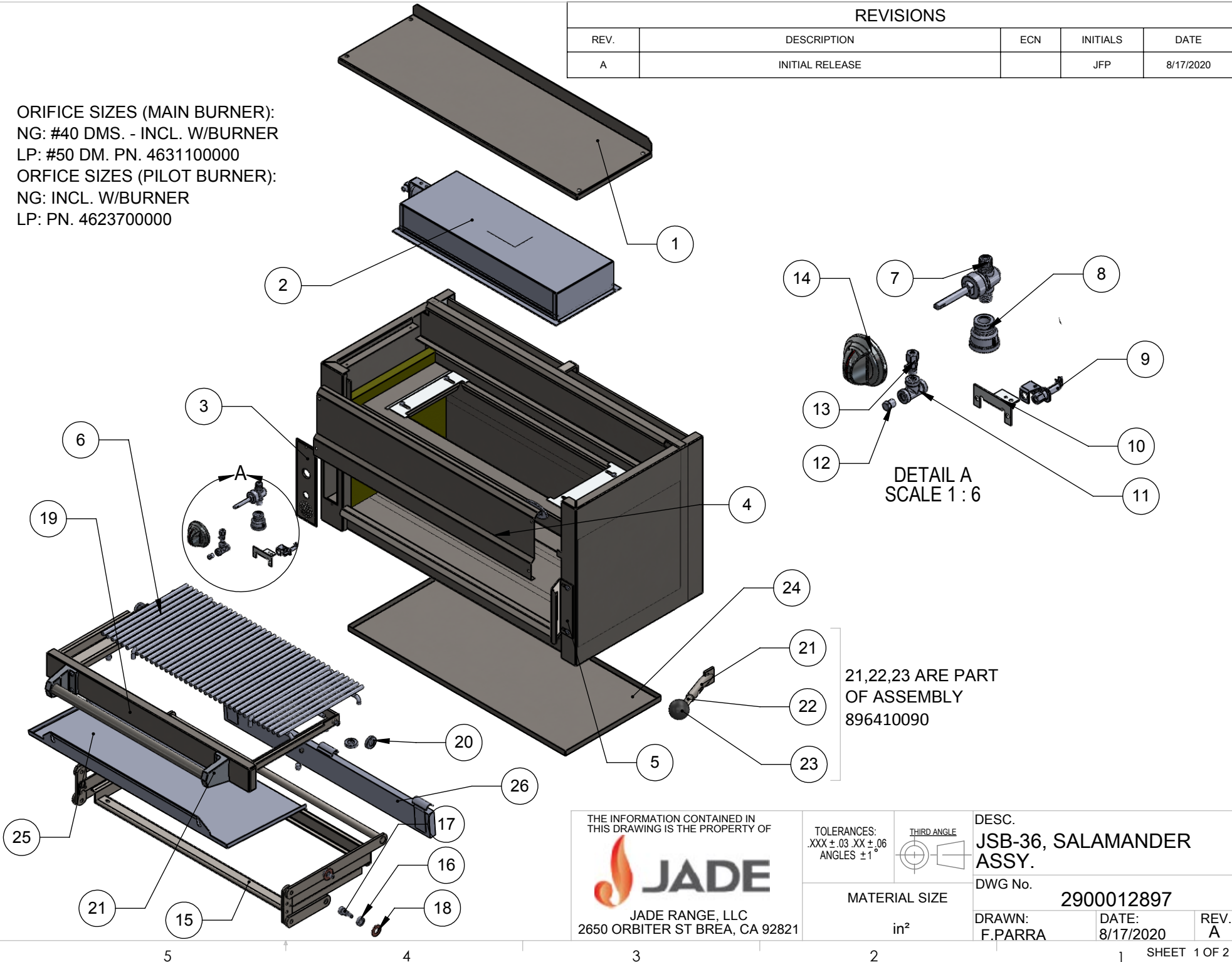


REVISIONS

REV.	DESCRIPTION	ECN	INITIALS	DATE
A	INITIAL RELEASE		JFP	8/17/2020

ORIFICE SIZES (MAIN BURNER):  
 NG: #40 DMS. - INCL. W/BURNER  
 LP: #50 DM. PN. 4631100000  
 ORFICE SIZES (PILOT BURNER):  
 NG: INCL. W/BURNER  
 LP: PN. 4623700000



DETAIL A  
 SCALE 1 : 6

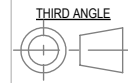
21,22,23 ARE PART  
 OF ASSEMBLY  
 896410090

THE INFORMATION CONTAINED IN THIS DRAWING IS THE PROPERTY OF



JADE RANGE, LLC  
 2650 ORBITER ST BREA, CA 92821

TOLERANCES:  
 .XXX ± .03 .XX ± .06  
 ANGLES ± 1°




MATERIAL SIZE  
 in<sup>2</sup>

DESC. <b>JSB-36, SALAMANDER ASSY.</b>		
DWG No. <b>2900012897</b>		
DRAWN: F.PARRA	DATE: 8/17/2020	REV. A

ITEM NO.	PART NUMBER	DESCRIPTION	QTY.
1	8912900000	TOP PANEL JSB-36 WM	1
2	1212200000	BURNER, IR, SALAMANDR C40T-5	1
3	8910700000	CONVER, CONTROL	1
4	8910600000	FRONT PANEL, JSB	1
5	8916700000	RATCHET, CARRIAGE JSB	1
6	1412000200	RACK, SALAMANDER	1
7	4410600100	VALVE, 3/8 MPT X 3/8 MPT	1
8	1831800000	COUPLER, REDUCER 3/4 X 3/8	1
9	4613100100	PILOT, SALAMANDER 5CHL-2	1
10	8915900000	BRACKET, PILOT, JSB NG	1
11	1813900000	TEE, 1/8 X 1/8 X 1/8 BLK 150#	1
12	1813000000	PLUG, 1/8 HX HD BLK	1
13	4410400000	VALVE,PT#MV3801 SINGLE PILOT	1
14	3000012131	TITAN ARC KNOB 2.75	1
15	8946300090	MECHANISM, WELD ASSY.	1
16	8933000000	BUSHING, SPACER - FRONT CARRIAGE	4
17	3452200000	BOLT, SHD. SOCKET 1/2 X 5/8	4
18	3458100000	WASHER, BRASS 9/16 ID 1 1/4 OD	4
19	8946210090	CARRIAGE ASSY W/HANDLE/BEARING	1
20	3047600000	BALL BEARING, 1.31 OD; 1/4 ID	4
21	8946400000	HANDLE, SUB ASSY, JSB-36	1
22	8933300000	ROD, HANDLE SEEALSO 3000011057	1
23	3048500000	KNOB PLASTIC BL #6046K29	1
24	8946510090	DRIP TRAY, WELD ASSY	1
25	2500010645	TRAVELING DRIP TRAY ASSEMBLY	1
26	2500137429	JSB BRACKET HOLDER ASSY (COUNTER WEIGHT)	1

THE INFORMATION CONTAINED IN THIS DRAWING IS THE PROPERTY OF



JADE RANGE, LLC  
2650 ORBITER ST BREA, CA 92821

DESC.  
JSB-36, SALAMANDER ASSY.

DWG No. 2900012897

DRAWN:  
F.PARRA

DATE:  
8/17/2020

REV.  
A