

THIS DRAWING IS THE PROPERTY OF JADE RANGE LLC NO PART OF THIS DOCUMENT MAY BE COPIED OR USED WITHOUT THE WRITTEN PERMISSION.

THIS DRAWING IS A CONCEPTUAL LAYOUT, SUBJECT TO CHANGES AS THE FINAL MANUFACTURING PARTS ARE CREATED.

**ALL GAS PRESSURE REGULATORS ARE SHIPPED LOOSE & WILL NEED TO BE INSTALLED BY CERTIFIED PLUMBER - LOCAL CODE PREVAILING**

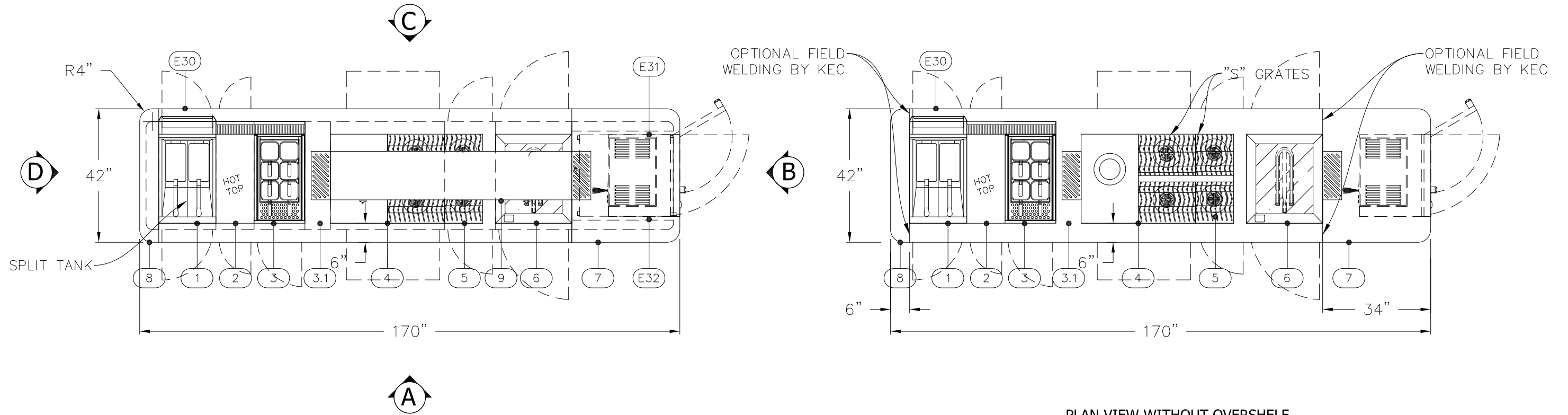
ITEM	QTY	MODEL #	DESCRIPTION	BTU/HR	AMP
E30	1	ISLAND SUITE	CUSTOM SINGLE PASS THRU ISLAND SUITE	N/A	N/A
1	1	JTFF-40-18-ST, SIG	TITAN 18", SPLIT/TWIN TANK MATCH FRYER, CABINET BASE	122,000	N/A
2	1	JTRH-1HT-PT, SIG	TITAN 12", 12" HOT TOP, CABINET BASE PASS THRU	35,000	N/A
3	1	JTPC-16, SIG	TITAN 16", PASTA COOKER, CABINET BASE	80,000	N/A
3.1	1	JTPR-8-PT, SIG	TITAN 8", SPREADER PLATE, ENCLOSED CABINET BASE	N/A	N/A
4	1	JTRH-1FHT-2-36HM-PT, SIG	TITAN 36", 18" FRENCH HOT TOP, (2) 12" OPEN BURNERS, HIGH MASS OVEN BASE PASS THRU	135,000	N/A
5	1	JTRH-2-A-PT, SIG	TITAN 12", (2) 12" OPEN BURNERS, CABINET BASE PASS THRU	70,000	N/A
6	1	JTRH-24IP-PT, SIG	TITAN 24", PLANCHA TOP, PASS THRU CABINET BASE	17,500	N/A
7	1	END CABINET 1	CUSTOM TITAN END CABINET 1	N/A	N/A
8	1	END CABINET 2	CUSTOM TITAN END CABINET 2	N/A	N/A
9	1	JCM-76-PT	TITAN 76", CHEESEMELTER, PASS THRU	60,000	N/A
E31	1	SCC XS E	RATIONAL COMBI OVEN 208V/60/1-Ph, BY OTHERS	N/A	27.5
E32	1	750-S	ALTO-SHAAM HOT FOOD HOLDING CABINET 208V/60/1-Ph, BY OTHERS	N/A	3.9

REVISIONS					
REV	DESCRIPTION	ECN	BY	DATE	APPROVED
A	INITIAL DRAWING PER REQUEST	XXX	ECS	12.23.20	
B	REVISED DRAWING PER REQUEST	XXX	ECS	06.22.21	
C	REVISED DRAWING PER REQUEST	XXX	ECS	06.22.21	

CHANGES TO DRAWING MAY RESULT IN CHANGES TO DELIVERY DATE & COST

**SIGNATURE PACKAGE**

TOTAL BTU/HR: 519,000  
TOTAL AMPS:(208V) 31.4A



**PLAN VIEW WITHOUT OVERSHELF**

MIN 6" CLEARANCE ABOVE FLUE PEDESTALS

GAS TYPE:  
ELEVATION:  
TO BE SPECIFIED BEFORE MFG.

- 1.  $\oplus$   $\text{G}$   $\text{R}$  REGULATOR AND GAS CONNECTION
  - $\text{E}$  ELECTRICAL CONNECTION
  - $\text{D}$  DRAIN
  - $\text{R}$  REFRIGERATION
  - $\text{W}$  WATER
2. GAS SHUT-OFF VALVES AND CONNECTIONS SUPPLIED BY OTHERS.
3. ALL ELECTRICAL WORK (INSTALLATIONS AND CONNECTIONS) MUST BE PROVIDED BY OTHERS (BY CERTIFIED ELECTRICIAN)

PROJECT MANAGER: MARIA CORDERO



UNLESS OTHERWISE NOTED DIMENSIONS ARE IN INCHES AND TOLERANCES: .X $\pm$ .125 .XX $\pm$ .03 .XXX $\pm$ .015. ANGLES  $\pm$ 1°

MATERIAL	DRAWN	ECS	12.23.20
FINISH	CHECKED		
	APPROVED		

DESC	<b>Partake - Long Beach</b>		
FOR			
SIZE	DWG NO	<b>21084C</b>	
B		SCALE	3/8" = 1'-0"
		SHEET	1 OF 5

THIS DRAWING IS THE PROPERTY OF JADE RANGE LLC NO PART OF THIS DOCUMENT MAY BE COPIED OR USED WITHOUT THE WRITTEN PERMISSION.

THIS DRAWING IS A CONCEPTUAL LAYOUT, SUBJECT TO CHANGES AS THE FINAL MANUFACTURING PARTS ARE CREATED.

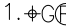

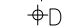


REVISIONS					
REV	DESCRIPTION	ECN	BY	DATE	APPROVED
A	INITIAL DRAWING PER REQUEST	XXX	ECS	12.23.20	
B	REVISED DRAWING PER REQUEST	XXX	ECS	06.22.21	
C	REVISED DRAWING PER REQUEST	XXX	ECS	06.22.21	
CHANGES TO DRAWING MAY RESULT IN CHANGES TO DELIVERY DATE & COST					

NOTES:

- All electrical wires, conduit and pig tails are provided by Jade and are long enough to reach the main load panel, which is also provided by Jade. The connection of the wires, conduit and pigtails, which are provided by Jade, from each component to the load panel is to be completed by the KEC or contract electrician. The KEC or contract electrician is to make the final connection from the load panel to the incoming main line.
- All gas manifolds and connection of the gas manifolds in between each unit are provided by Jade. Those connections to the main manifold from each Jade unit is to be completed by the KEC or plumbing contractor. The KEC or plumbing contractor is to make the final connection from the main manifold to the gas pressure regulator located in the specified location per drawing and then to make the connections to the main incoming gas line.
- All convenience outlets to be commercial grade GFCI breakers and outlets.
- All water connections and drain connections are to be completed by the KEC or contract plumber. Jade provides no water or drain connections, only fixtures and devices that require water and / or drains. The KEC or contract plumber is to complete all the water lines to each water connection and each drain connection to the appropriate floor sink/drain.
- All units ship assembled unless otherwise specified. Jade Range ships salamanders and cheesemelters range mounted and line-ups & suites ship in as large of sections as possible for easier assembly onsite at the time of install.

MIN 6" CLEARANCE  
ABOVE FLUE PEDESTALS

GAS TYPE:	
ELEVATION:	
TO BE SPECIFIED BEFORE MFG.	

- 1.  REGULATOR AND GAS CONNECTION
-  ELECTRICAL CONNECTION
-  DRAIN
-  REFRIGERATION
-  WATER
- 2. GAS SHUT-OFF VALVES AND CONNECTIONS SUPPLIED BY OTHERS.
- 3. ALL ELECTRICAL WORK (INSTALLATIONS AND CONNECTIONS) MUST BE PROVIDED BY OTHERS (BY CERTIFIED ELECTRICIAN)



UNLESS OTHERWISE NOTED DIMENSIONS ARE IN INCHES AND TOLERANCES: .X±.125 .XX±.03 .XXX±.015. ANGLES ±1°

MATERIAL	DRAWN	ECS	12.23.20
	CHECKED		
FINISH	APPROVED		

DESC		<b>Partake - Long Beach</b>	
FOR		SIZE	DWG NO
		<b>B</b>	<b>21084C</b>
SCALE	3/8" = 1'-0"		SHEET 2 OF 5

PROJECT MANAGER: MARIA CORDERO

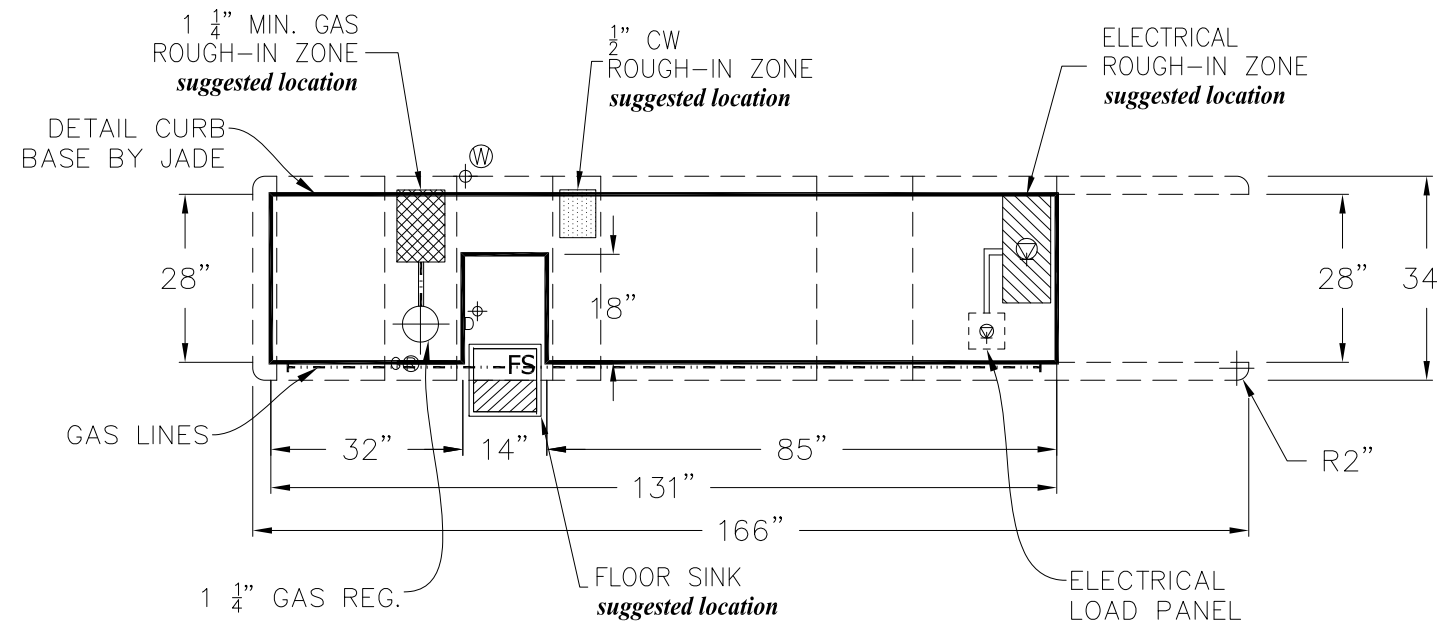
THIS DRAWING IS THE PROPERTY OF JADE RANGE LLC NO PART OF THIS DOCUMENT MAY BE COPIED OR USED WITHOUT THE WRITTEN PERMISSION.

THIS DRAWING IS A CONCEPTUAL LAYOUT, SUBJECT TO CHANGES AS THE FINAL MANUFACTURING PARTS ARE CREATED.

REVISIONS					
REV	DESCRIPTION	ECN	BY	DATE	APPROVED
A	INITIAL DRAWING PER REQUEST	XXX	ECS	12.23.20	
B	REVISED DRAWING PER REQUEST	XXX	ECS	06.22.21	
C	REVISED DRAWING PER REQUEST	XXX	ECS	06.22.21	

CHANGES TO DRAWING MAY RESULT IN CHANGES TO DELIVERY DATE & COST

**ADD LOAD PANEL SCHEDULE HERE**



**CURB PERIMETER DETAIL**

MIN 6" CLEARANCE ABOVE FLUE PEDESTALS

GAS TYPE:	
ELEVATION:	
TO BE SPECIFIED BEFORE MFG.	

PROJECT MANAGER: MARIA CORDERO

- 1.  $\oplus$   $\text{G}$   $\text{R}$  REGULATOR AND GAS CONNECTION
- $\text{E}$  ELECTRICAL CONNECTION
- $\text{D}$  DRAIN
- $\text{R}$  REFRIGERATION
- $\text{W}$  WATER
- 2. GAS SHUT-OFF VALVES AND CONNECTIONS SUPPLIED BY OTHERS.
- 3. ALL ELECTRICAL WORK (INSTALLATIONS AND CONNECTIONS) MUST BE PROVIDED BY OTHERS (BY CERTIFIED ELECTRICIAN)

UNLESS OTHERWISE NOTED DIMENSIONS ARE IN INCHES AND TOLERANCES: .X±.125 .XX±.03 .XXX±.015. ANGLES ±1°

MATERIAL	DRAWN	ECS	12.23.20
FINISH	CHECKED		
	APPROVED		

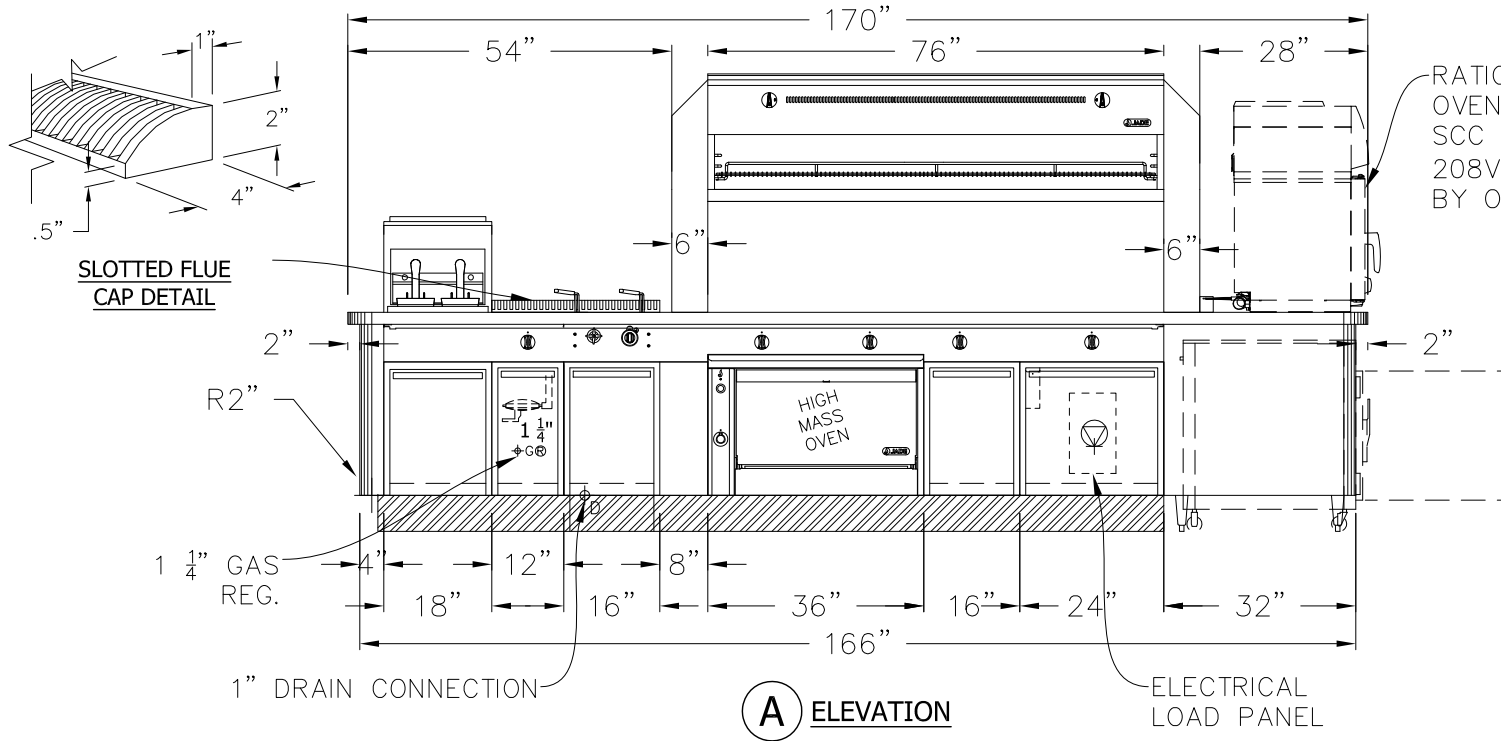
DESC	<b>Partake - Long Beach</b>		
FOR	SIZE	DWG NO	
	<b>B</b>	<b>21084C</b>	
SCALE	3/8" = 1'-0"		SHEET 3 OF 5

THIS DRAWING IS THE PROPERTY OF JADE RANGE LLC NO PART OF THIS DOCUMENT MAY BE COPIED OR USED WITHOUT THE WRITTEN PERMISSION.

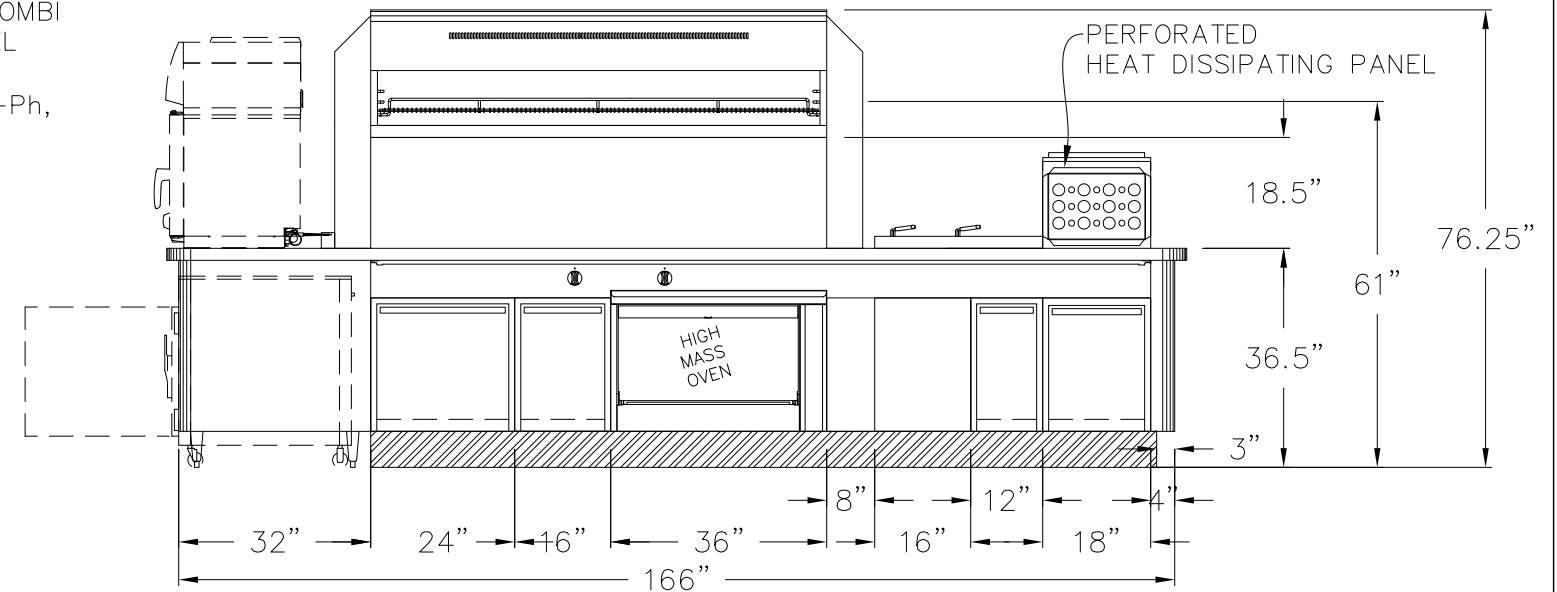
THIS DRAWING IS A CONCEPTUAL LAYOUT, SUBJECT TO CHANGES AS THE FINAL MANUFACTURING PARTS ARE CREATED.

REVISIONS					
REV	DESCRIPTION	ECN	BY	DATE	APPROVED
A	INITIAL DRAWING PER REQUEST	XXX	ECS	12.23.20	
B	REVISED DRAWING PER REQUEST	XXX	ECS	06.22.21	
C	REVISED DRAWING PER REQUEST	XXX	ECS	06.22.21	

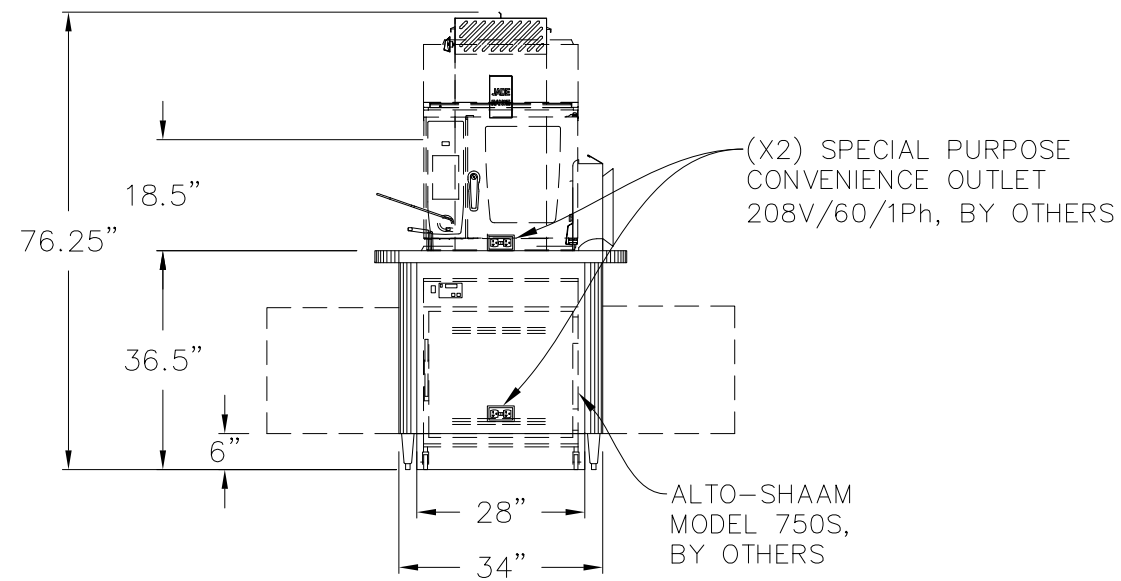
CHANGES TO DRAWING MAY RESULT IN CHANGES TO DELIVERY DATE & COST



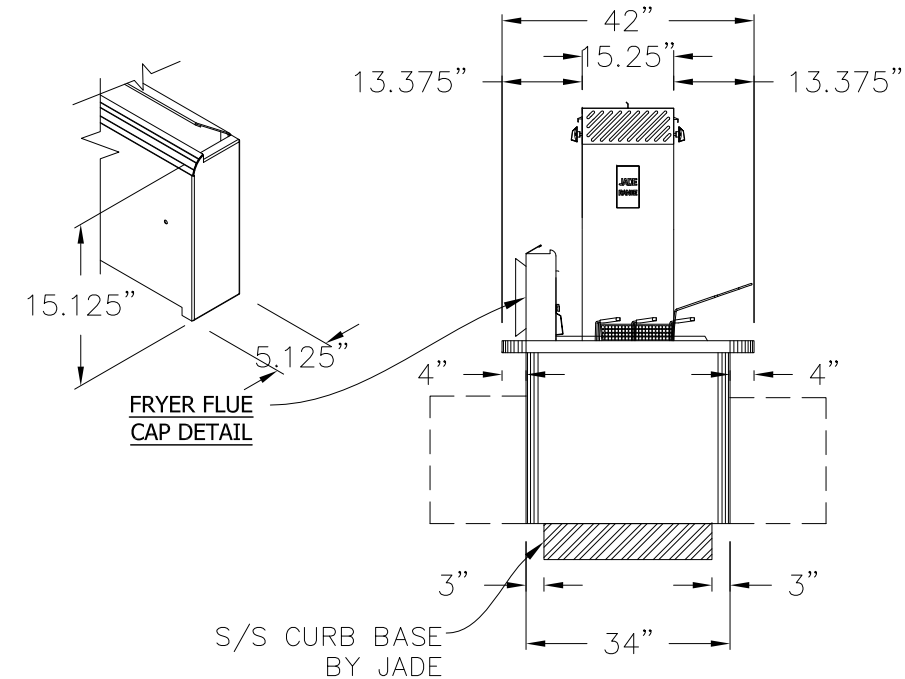
**A ELEVATION**



**C ELEVATION**



**B ELEVATION**



**D ELEVATION**

MIN 6" CLEARANCE ABOVE FLUE PEDESTALS

GAS TYPE:	
ELEVATION:	
TO BE SPECIFIED BEFORE MFG.	

- 1. +GⓄ REGULATOR AND GAS CONNECTION
- Ⓞ ELECTRICAL CONNECTION
- +D DRAIN
- Ⓡ REFRIGERATION
- Ⓢ WATER
- 2. GAS SHUT-OFF VALVES AND CONNECTIONS SUPPLIED BY OTHERS.
- 3. ALL ELECTRICAL WORK (INSTALLATIONS AND CONNECTIONS) MUST BE PROVIDED BY OTHERS (BY CERTIFIED ELECTRICIAN)

PROJECT MANAGER: MARIA CORDERO



UNLESS OTHERWISE NOTED DIMENSIONS ARE IN INCHES AND TOLERANCES: .X±.125 .XX±.03 .XXX±.015. ANGLES ±1°

MATERIAL	DRAWN	ECS	12.23.20
FINISH	CHECKED		
	APPROVED		

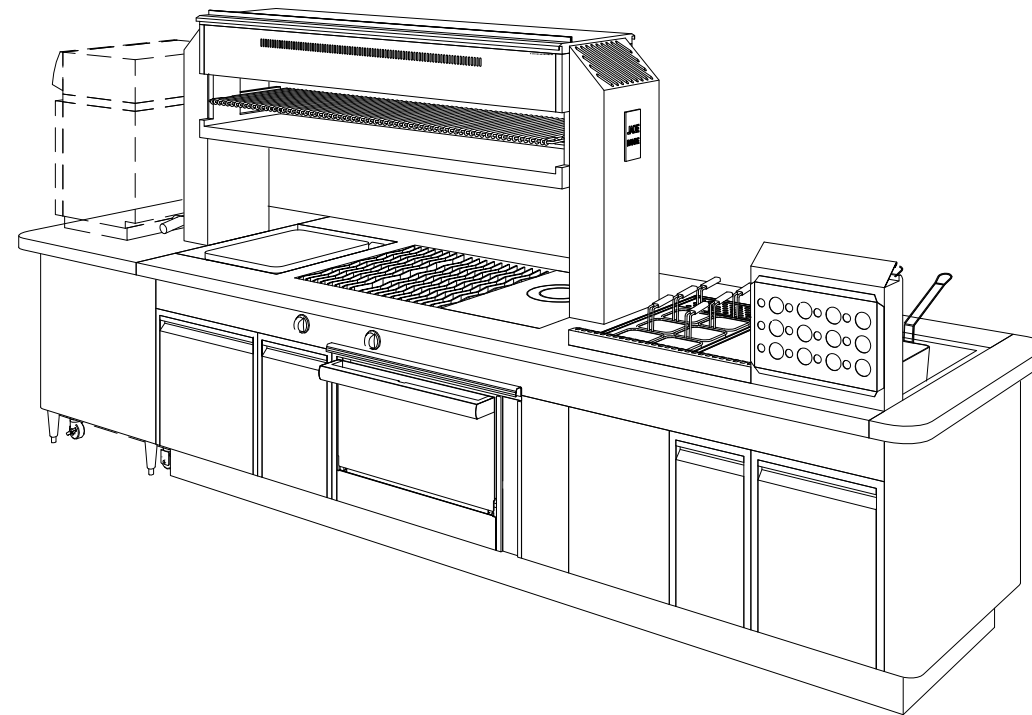
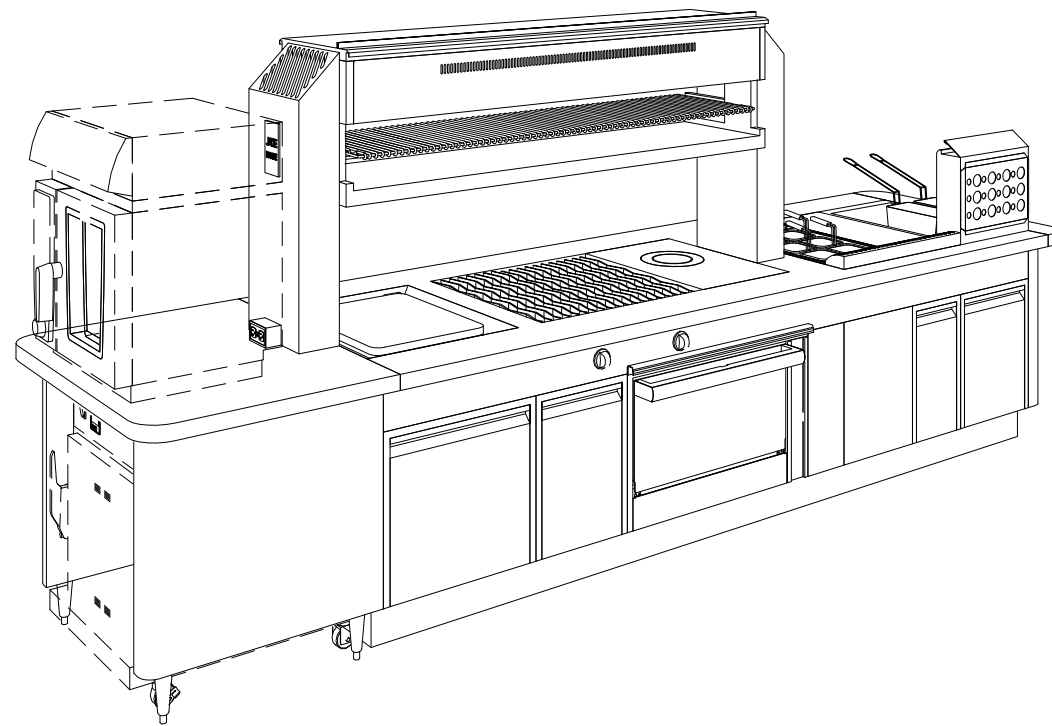
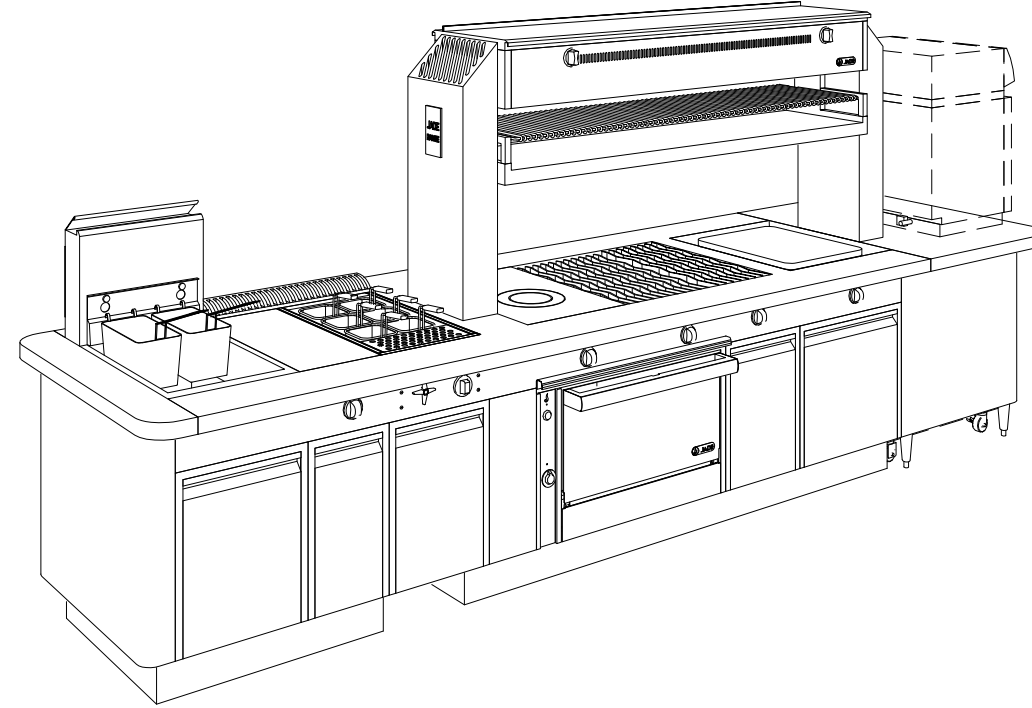
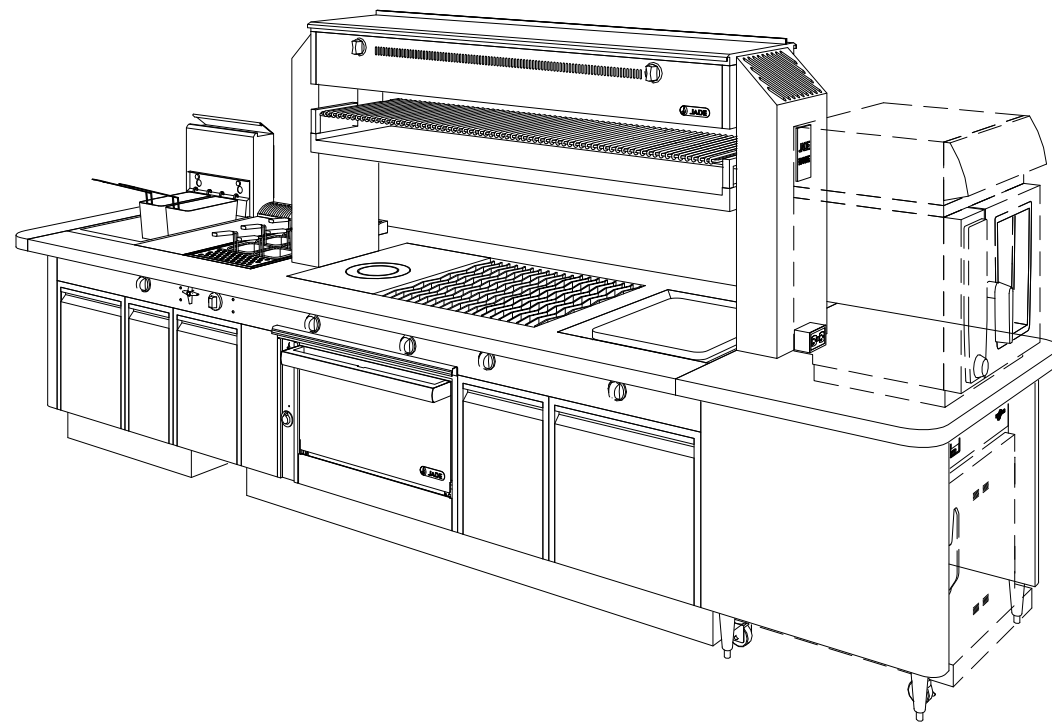
DESC	<b>Partake - Long Beach</b>		
FOR	SIZE	DWG NO	
	<b>B</b>	<b>21084C</b>	
SCALE	3/8" = 1'-0"		SHEET 4 OF 5

THIS DRAWING IS THE PROPERTY OF JADE RANGE LLC. NO PART OF THIS DOCUMENT MAY BE COPIED OR USED WITHOUT THE WRITTEN PERMISSION.

THIS DRAWING IS A CONCEPTUAL LAYOUT, SUBJECT TO CHANGES AS THE FINAL MANUFACTURING PARTS ARE CREATED.

REVISIONS					
REV	DESCRIPTION	ECN	BY	DATE	APPROVED
A	INITIAL DRAWING PER REQUEST	XXX	ECS	12.23.20	
B	REVISED DRAWING PER REQUEST	XXX	ECS	06.22.21	
C	REVISED DRAWING PER REQUEST	XXX	ECS	06.22.21	

CHANGES TO DRAWING MAY RESULT IN CHANGES TO DELIVERY DATE & COST



MIN 6" CLEARANCE  
ABOVE FLUE PEDESTALS

GAS TYPE: \_\_\_\_\_  
ELEVATION: \_\_\_\_\_  
TO BE SPECIFIED BEFORE MFG.

- 1.  $\oplus$   $\text{G}$   $\text{R}$  REGULATOR AND GAS CONNECTION
- $\text{E}$  ELECTRICAL CONNECTION
- $\text{D}$  DRAIN
- $\text{R}$  REFRIGERATION
- $\text{W}$  WATER
- 2. GAS SHUT-OFF VALVES AND CONNECTIONS SUPPLIED BY OTHERS.
- 3. ALL ELECTRICAL WORK (INSTALLATIONS AND CONNECTIONS) MUST BE PROVIDED BY OTHERS (BY CERTIFIED ELECTRICIAN)

PROJECT MANAGER: MARIA CORDERO



UNLESS OTHERWISE NOTED DIMENSIONS ARE IN INCHES AND TOLERANCES: .X±.125 .XX±.03 .XXX±.015. ANGLES ±1°

MATERIAL	DRAWN	ECS	12.23.20
FINISH	CHECKED		
	APPROVED		

DESC	Partake - Long Beach		
FOR			
SIZE	DWG NO		
B	21084C		
SCALE	NTS	SHEET	5 OF 5