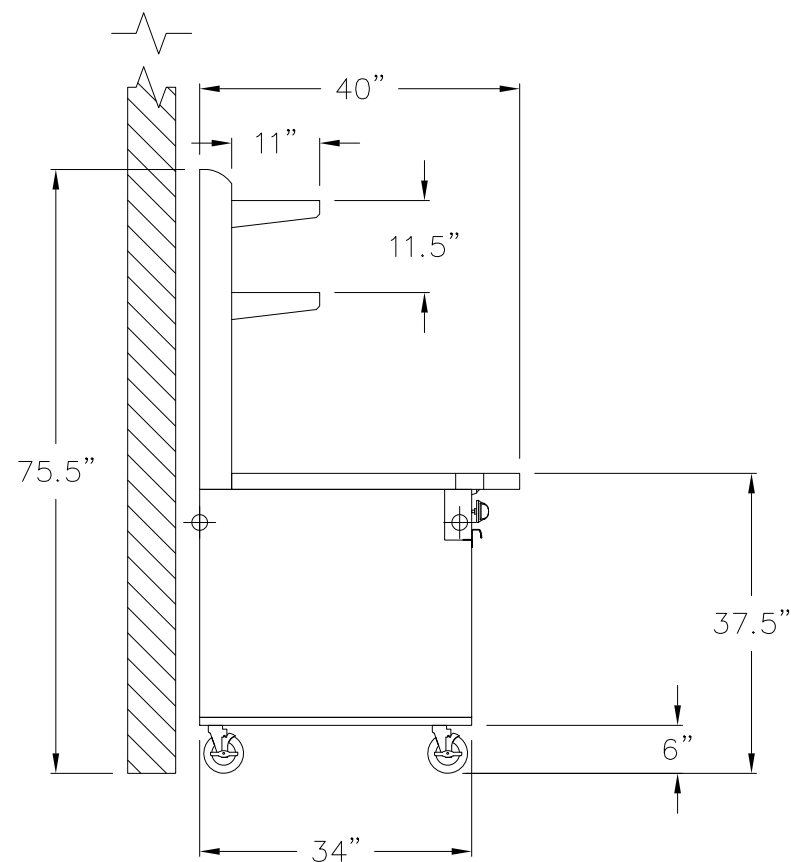


THIS DRAWING IS A CONCEPTUAL LAYOUT, SUBJECT TO CHANGES AS THE FINAL MANUFACTURING PARTS ARE CREATED.






ALL GAS REGULATORS LARGER THAN 3/4" ARE TO BE
INSTALLED IN A HORIZONTAL FASHION WITH THE TOP
ORIENTED UPWARDS AS PER MANUFACTURER
SPECIFICATIONS. ALL GAS PRESSURE REGULATORS ARE
SHIPPED LOOSE & WILL NEED TO BE INSTALLED BY
CERTIFIED PLUMBER - LOCAL CODE PREVAILING

CUSTOMER TO ADVISE ABOUT SHIPPING SECTIONS
PRIOR TO SHIPMENT. ANY ITEMS SHIPPED
DISASSEMBLED FROM ORIGINAL DESIGN INTENT
WILL NEED TO BE REASSEMBLED BY THE KEC AT
TIME OF INSTALLATION.



SIDE VIEW

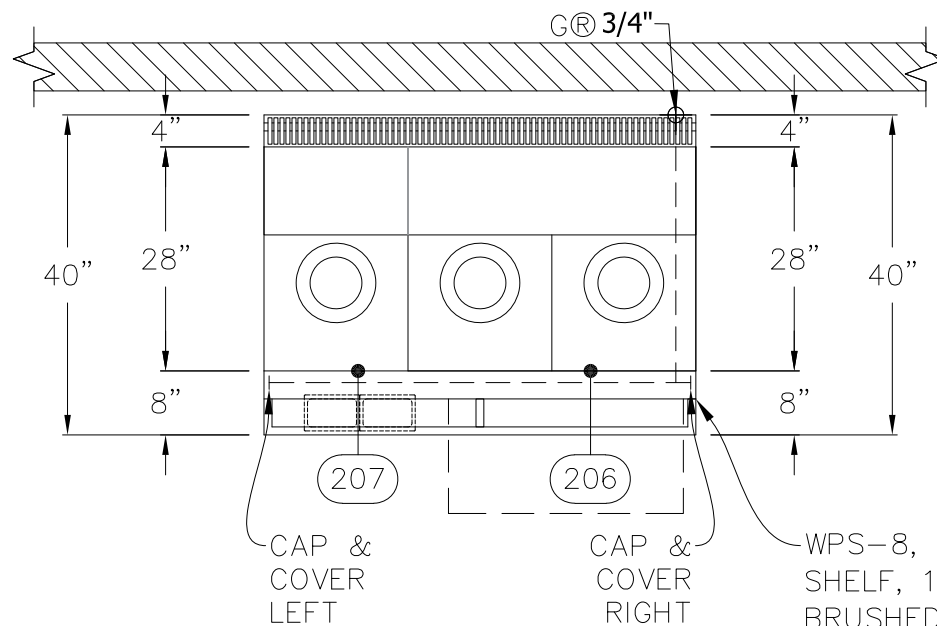
MIN 6" CLEARANCE ABOVE FLUE PEDESTALS	
GAS TYPE:	
ELEVATION:	
TO BE SPECIFIED BEFORE MFG.	

1.  REGULATOR AND GAS CONNECTION
 ELECTRICAL CONNECTION
 DRAIN
 REFRIGERATION
 WATER

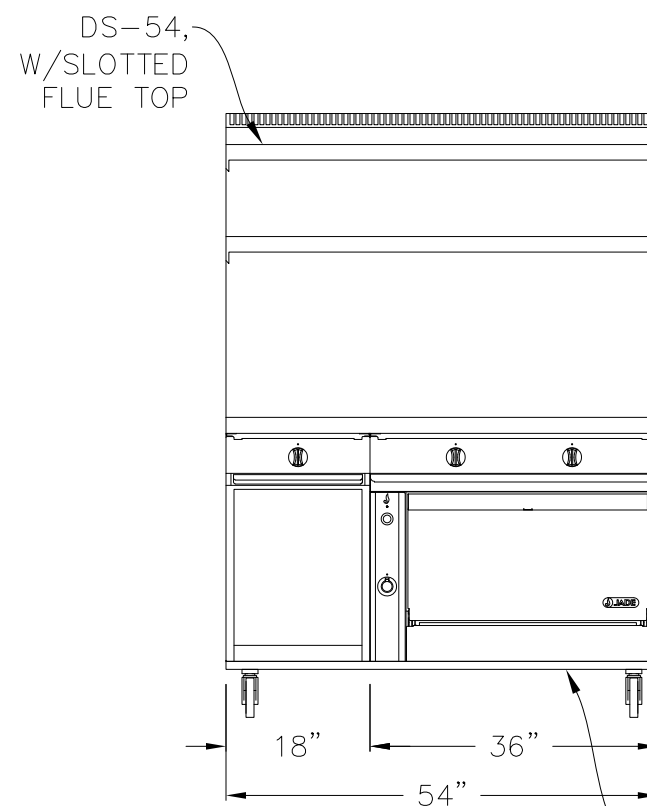
2. GAS SHUT-OFF VALVES AND CONNECTIONS SUPPLIED BY OTHERS.

3. ALL ELECTRICAL WORK (INSTALLATIONS AND CONNECTIONS)
 MUST BE PROVIDED BY OTHERS (BY CERTIFIED ELECTRICIAN)

ITEM	QTY	MODEL #	DESCRIPTION	BTU/HR	TOTAL AMP
206	1	JTRH-2FHT-36, SIG	TITAN 36", (2) 18" FRENCH HOT TOPS, OVEN BASE	95,000	N/A
207	1	JTRH-1FHT, SIG	TITAN 18", FRENCH HOT TOP, OPEN CABINET BASE	30,000	N/A



ELEVATION

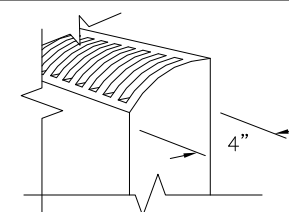


ELEVATION

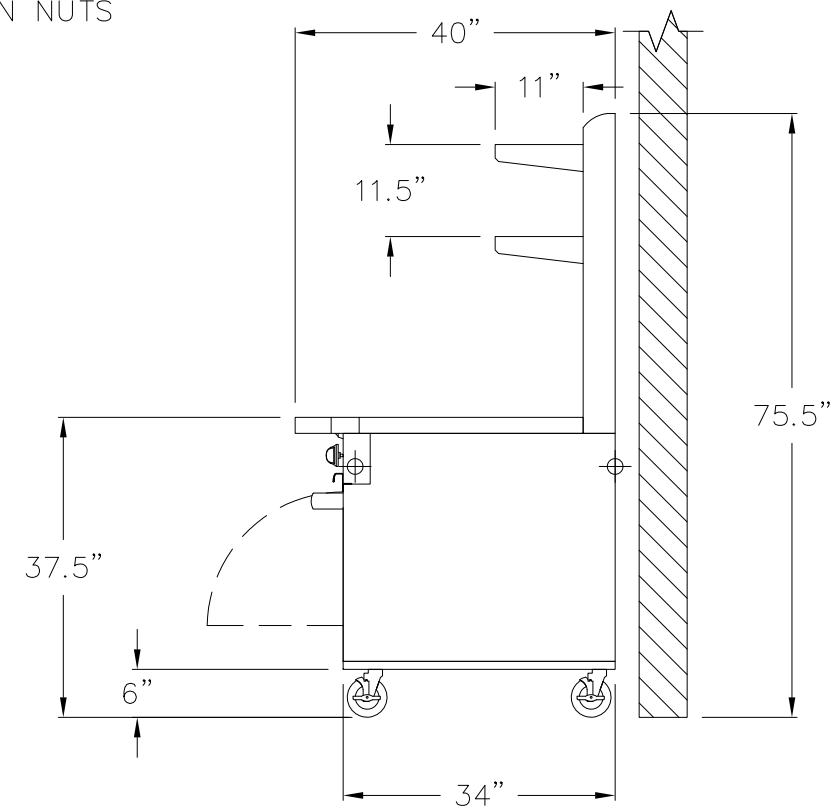
~54" DOLLY FRAME W/ FOUR
CASTERS, 2 WITH BRAKES

P	REVISIONS					
	REV	DESCRIPTION	ECN	BY	DATE	APPROVED
	A	INITIAL DRAWING PER REQUEST	XXX	ECS	11.17.23	
	B	REVISED DRAWING PER REQUEST	XXX	ECS	12.05.23	
	C	REVISED DRAWING PER REQUEST	XXX	ECS	12.21.23	
	D	REVISED DRAWING PER REQUEST	XXX	ECS	01.11.24	
	E	REVISED DRAWING PER REQUEST	XXX	ECS	07.29.24	
	F	REVISED DRAWING PER REQUEST	XXX	ECS	08.05.24	
	G	REVISED DRAWING PER REQUEST	XXX	ECS	09.06.24	
	H	REVISED DRAWING PER REQUEST	XXX	ECS	11.04.24	
	J	REVISED DRAWING PER REQUEST	XXX	ECS	11.13.24	
	CHANGES TO DRAWING MAY RESULT IN CHANGES TO DELIVERY DATE & COST					


SIGNATURE PACKAGE



SLOTTED FLUE
TOP DETAIL



SIDE VIEW

 <p>JADE RANGE LLC 2650 ORBITER ST. BREA, CA 92821 -A MIDDLEBY CO.</p>	UNLESS OTHERWISE NOTED DIMENSIONS ARE IN INCHES AND TOLERANCES: .X±.125 .XX±.03 .XXX±.015. ANGLES ±1°				DESC Alston Chicago	
	MATERIAL	DRAWN	ECS	11.17.23	FOR	
		CHECKED			SIZE	DWG NO
		APPROVED			B	23570J
FINISH				SCALE	1/2" = 1'-0"	SHEET 1 OF 4

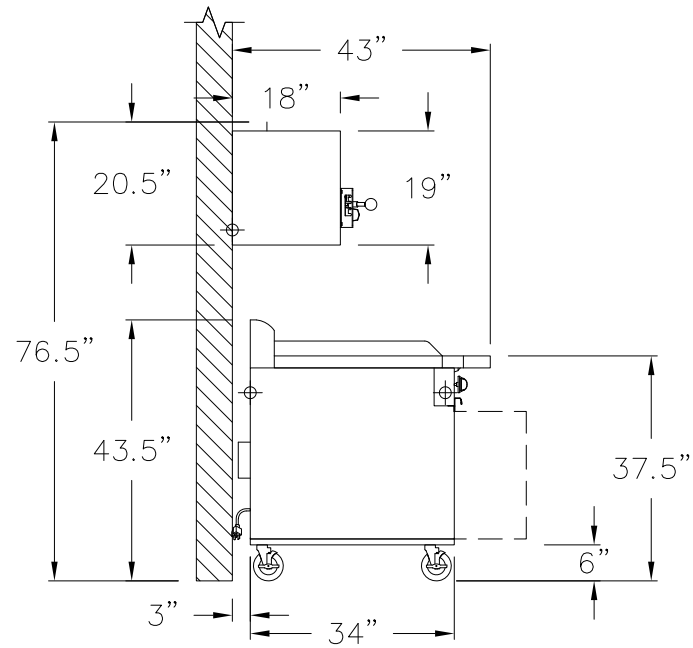
THIS DRAWING IS THE PROPERTY OF JADE RANGE LLC NO PART OF THIS DOCUMENT MAY BE COPIED OR USED WITHOUT THE WRITTEN PERMISSION.

THIS DRAWING IS A CONCEPTUAL LAYOUT, SUBJECT TO CHANGES AS THE FINAL MANUFACTURING PARTS ARE CREATED.

NOTE:
• All units ship assembled unless otherwise specified. Jade Range ships salamanders and cheesemelters range mounted and line-ups & suites ship in as large of sections as possible for easier assembly onsite at the time of install.

ALL GAS REGULATORS LARGER THAN 3/4" ARE TO BE INSTALLED IN A HORIZONTAL FASHION WITH THE TOP ORIENTED UPWARDS AS PER MANUFACTURER SPECIFICATIONS. ALL GAS PRESSURE REGULATORS ARE SHIPPED LOOSE & WILL NEED TO BE INSTALLED BY CERTIFIED PLUMBER - LOCAL CODE PREVAILING

SHIPPING INSTRUCTIONS
CUSTOMER TO ADVISE ABOUT SHIPPING SECTIONS PRIOR TO SHIPMENT. ANY ITEMS SHIPPED DISASSEMBLED FROM ORIGINAL DESIGN INTENT WILL NEED TO BE REASSEMBLED BY THE KEC AT TIME OF INSTALLATION.

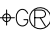



SIDE VIEW


MIN 6" CLEARANCE
ABOVE FLUE PEDESTALS


GAS TYPE:	
ELEVATION:	
TO BE SPECIFIED BEFORE MFG.	


PROJECT MANAGER: MARIA CORDERO

1.  REGULATOR AND GAS CONNECTION

 ELECTRICAL CONNECTION

 DRAIN

 REFRIGERATION

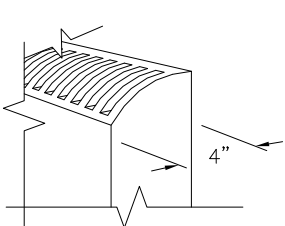
 WATER
2. GAS SHUT-OFF VALVES AND CONNECTIONS SUPPLIED BY OTHERS.

3. ALL ELECTRICAL WORK (INSTALLATIONS AND CONNECTIONS) MUST BE PROVIDED BY OTHERS (BY CERTIFIED ELECTRICIAN)

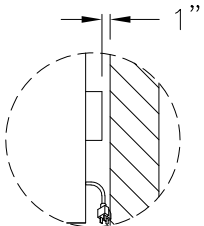
ITEM	QTY	MODEL #	DESCRIPTION	BTU/HR	TOTAL AMP
241	1	JTPR-8-SD, SIG	TITAN 8", SPREADER CABINET, CABINET BASE W/DOOR	N/A	N/A
242	1	JSB-36WM	TITAN 36", SALAMANDER BROILER, WALL MOUNT	35,000	N/A
243	1	JTRH-36GT-36C, 550F, SIG	TITAN 36", 550°F THERMOSTATIC GRIDDLE, CONVECTION OVEN, 115V/60/1-Ph 4.4 AMPS	120,000	4.4
244	1	JTRH-2FHT-36C, SIG	TITAN 36", (2) 18" FRENCH HOT TOPS, CONVECTION OVEN, 115V/60/1-Ph 4.4 AMPS	90,000	4.4
245	1	JTPR-12-SD, SIG	TITAN 12", SPREADER CABINET, CABINET W/DOOR	N/A	N/A
246	1	JMPR-12, SIG	TITAN 12", SPREADER PLATE, MODULAR	N/A	N/A
247	1	JTPC-18, SIG	TITAN 18", PASTA COOKER, CABINET BASE	80,000	N/A
248	1	JMRH-2FHT, SIG	TITAN 36", (2) 18" FRENCH HOT TOPS, MODULAR	60,000	N/A
249	1	JRLH-02S-T-48	TITAN 48", SELF-CONTAINED, REFRIGERATED BASE 115V/60/1-Ph 12.6 AMPS	1,300	12.6

REVISIONS					
REV	DESCRIPTION	ECN	BY	DATE	APPROVED
A	INITIAL DRAWING PER REQUEST	XXX	ECS	11.17.23	
B	REVISED DRAWING PER REQUEST	XXX	ECS	12.05.23	
C	REVISED DRAWING PER REQUEST	XXX	ECS	12.21.23	
D	REVISED DRAWING PER REQUEST	XXX	ECS	01.11.24	
E	REVISED DRAWING PER REQUEST	XXX	ECS	07.29.24	
F	REVISED DRAWING PER REQUEST	XXX	ECS	08.05.24	
G	REVISED DRAWING PER REQUEST	XXX	ECS	09.06.24	
H	REVISED DRAWING PER REQUEST	XXX	ECS	11.04.24	
J	REVISED DRAWING PER REQUEST	XXX	ECS	11.13.24	
CHANGES TO DRAWING MAY RESULT IN CHANGES TO DELIVERY DATE & COST					

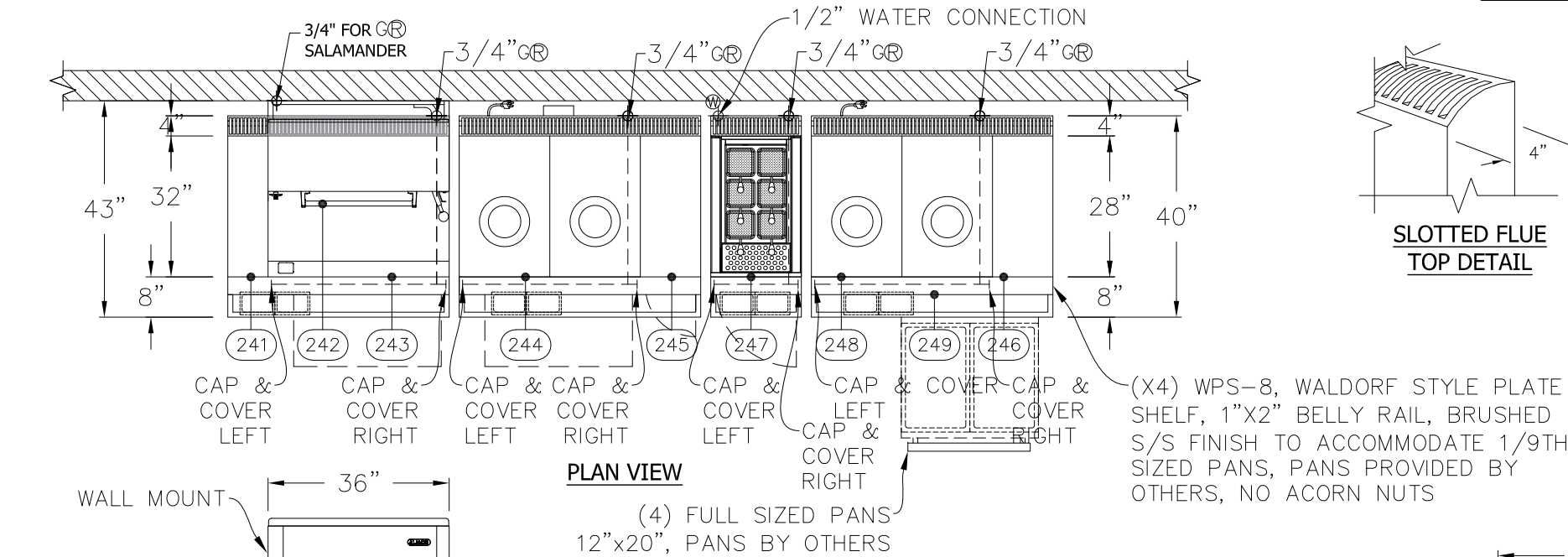
SIGNATURE PACKAGE



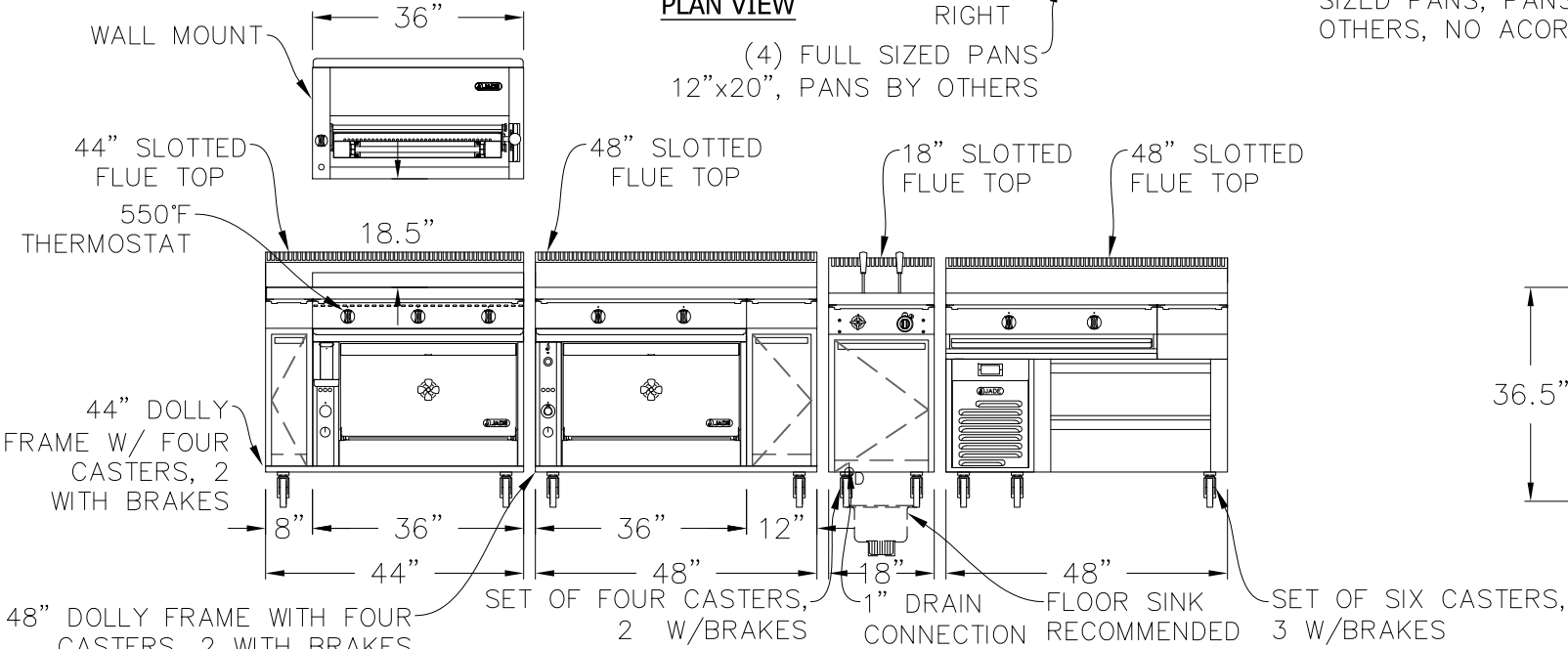
SLOTTED FLUE
TOP DETAIL



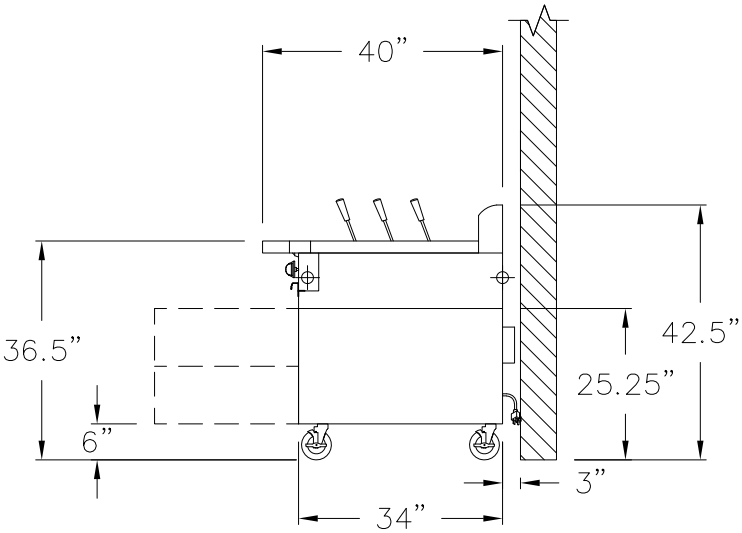
CONVECTION MOTOR
MINIMUM CLEARANCE
DETAIL



PLAN VIEW



ELEVATION



SIDE VIEW



JADE RANGE LLC
2650 ORBITER ST.
BREA, CA 92821
-A MIDDLEBY CO.

UNLESS OTHERWISE NOTED DIMENSIONS ARE IN INCHES AND TOLERANCES: .X±.125 .XX±.03 .XXX±.015. ANGLES ±1°

MATERIAL	DRAWN	ECS	11.17.23
FINISH	CHECKED		
	APPROVED		

DESC		Alston Chicago			
FOR		SIZE		DWG NO	
		B		23570J	
SCALE		3/8" = 1'-0"		SHEET 2 OF 4	

THIS DRAWING IS A CONCEPTUAL LAYOUT, SUBJECT TO
CHANGES AS THE FINAL MANUFACTURING PARTS ARE CREATED.

- All units ship assembled unless otherwise specified. Jade Range ships salamanders and cheesemelters range mounted and line-ups & suites ship in as large of sections as possible for easier assembly onsite at the time of install.






**CUSTOMER TO ADVISE ABOUT SHIPPING SECTIONS
PRIOR TO SHIPMENT. ANY ITEMS SHIPPED
DISASSEMBLED FROM ORIGINAL DESIGN INTENT
WILL NEED TO BE REASSEMBLED BY THE KEC AT
TIME OF INSTALLATION.**



MIN 6" CLEARANCE
ABOVE FLUE PEDESTALS

GAS TYPE:	
ELEVATION:	
TO BE SPECIFIED BEFORE MFG.	

PROJECT MANAGER: MARIA CORDERO

1.  REGULATOR AND GAS CONNECTION
 ELECTRICAL CONNECTION
 DRAIN
 REFRIGERATION
 WATER
2. GAS SHUT-OFF VALVES AND CONNECTIONS SUPPLIED BY OTHERS.
3. ALL ELECTRICAL WORK (INSTALLATIONS AND CONNECTIONS)
MUST BE PROVIDED BY OTHERS (BY CERTIFIED ELECTRICIAN)

REVISIONS						
REV	DESCRIPTION	ECN	BY	DATE	APPROVED	
A	INITIAL DRAWING PER REQUEST	XXX	ECS	11.17.23		
B	REVISED DRAWING PER REQUEST	XXX	ECS	12.05.23		
C	REVISED DRAWING PER REQUEST	XXX	ECS	12.21.23		
D	REVISED DRAWING PER REQUEST	XXX	ECS	01.11.24		
E	REVISED DRAWING PER REQUEST	XXX	ECS	07.29.24		
F	REVISED DRAWING PER REQUEST	XXX	ECS	08.05.24		
G	REVISED DRAWING PER REQUEST	XXX	ECS	09.06.24		
H	REVISED DRAWING PER REQUEST	XXX	ECS	11.04.24		
J	REVISED DRAWING PER REQUEST	XXX	ECS	11.13.24		
CHANGES TO DRAWING MAY RESULT IN CHANGES TO DELIVERY DATE & COST						



UNLESS OTHERWISE NOTED DIMENSIONS ARE IN INCHES
AND TOLERANCES: .X \pm .125 .XX \pm .03 .XXX \pm .015. ANGLES \pm 1°

MATERIAL	DRAWN	ECS	11.17.23
	CHECKED		
FINISH	APPROVED		

DESC	Alston Chicago		
FOR			
SIZE B	DWG NO	23570J	
SCALE	1/2" = 1'-0"	SHEET	3 OF 4

THIS DRAWING IS THE PROPERTY OF JADE RANGE LLC NO PART OF THIS DOCUMENT MAY BE COPIED OR USED WITHOUT THE WRITTEN PERMISSION.

THIS DRAWING IS A CONCEPTUAL LAYOUT, SUBJECT TO CHANGES AS THE FINAL MANUFACTURING PARTS ARE CREATED.

NOTE:

- All units ship assembled unless otherwise specified. Jade Range ships salamanders and cheesemelters range mounted and line-ups & suites ship in as large of sections as possible for easier assembly onsite at the time of install.

ALL GAS REGULATORS LARGER THAN 3/4" ARE TO BE INSTALLED IN A HORIZONTAL FASHION WITH THE TOP ORIENTED UPWARDS AS PER MANUFACTURER SPECIFICATIONS. ALL GAS PRESSURE REGULATORS ARE SHIPPED LOOSE & WILL NEED TO BE INSTALLED BY CERTIFIED PLUMBER - LOCAL CODE PREVAILING

SHIPPING INSTRUCTIONS

CUSTOMER TO ADVISE ABOUT SHIPPING SECTIONS PRIOR TO SHIPMENT. ANY ITEMS SHIPPED DISASSEMBLED FROM ORIGINAL DESIGN INTENT WILL NEED TO BE REASSEMBLED BY THE KEC AT TIME OF INSTALLATION.

(X2) WPS-8, WALDORF STYLE PLATE SHELF, 1"x2" BELLY RAIL, BRUSHED S/S FINISH TO ACCOMMODATE 1/9TH SIZED PANS, PANS PROVIDED BY OTHERS, NO ACORN NUTS

(2) FULL SIZE PANS 12"x20", PANS BY OTHERS

AREA M - BACK BAR PLAN VIEW

DTS-72, MOD, W/SLOTTED FLUE TOP

RANGE MOUNT

DTS-18, W/SLOTTED FLUE TOP

PSK-18, PAN SLIDE KIT TO ACCOMMODATE (5) 13"x18" HALF-SIZED LONG PANS, PANS BY OTHERS

SET OF FOUR CASTERS, 2 WITH BRAKES

72" DOLLY FRAME WITH SET OF SIX CASTERS, 3 W/BRAKES

SIDE VIEW

ELEVATION

SIDE VIEW

MIN 6" CLEARANCE ABOVE FLUE PEDESTALS

GAS TYPE:	
ELEVATION:	
TO BE SPECIFIED BEFORE MFG.	

PROJECT MANAGER: MARIA CORDERO

- 1.⚙️

REGULATOR AND GAS CONNECTION

⚡

ELECTRICAL CONNECTION

⚓

DRAIN

Ⓜ️

REFRIGERATION

💧

WATER
2. GAS SHUT-OFF VALVES AND CONNECTIONS SUPPLIED BY OTHERS.

3. ALL ELECTRICAL WORK (INSTALLATIONS AND CONNECTIONS) MUST BE PROVIDED BY OTHERS (BY CERTIFIED ELECTRICIAN)



JADE RANGE LLC
2650 ORBITER ST.
BREA, CA 92821
-A MIDDLEBY CO.

UNLESS OTHERWISE NOTED DIMENSIONS ARE IN INCHES AND TOLERANCES: .X±.125 .XX±.03 .XXX±.015. ANGLES ±1°

MATERIAL	DRAWN	ECS	11.17.23
	CHECKED		
FINISH	APPROVED		

DESC		Alston Chicago			
FOR		SIZE B		DWG NO 23570J	
SCALE 3/8" = 1'-0"		SHEET 4 OF 4			

ITEM	QTY	MODEL #	DESCRIPTION	BTU/HR	TOTAL AMP
1	1	JMRH-36B, SIG	TITAN 36", CHARBROILER, MODULAR	90,000	N/A
1.1	1	JRLH-02S-T-36	TITAN 36", SELF-CONTAINED, REFRIGERATED BASE 115V/60/1-Ph 12.6 AMPS	1,000	12.6
2	1	JTRH-2FHT-36C, SIG	TITAN 36", (2) 18" FRENCH HOT TOPS, CONVECTION OVEN, 115V/60/1-Ph 4.4 AMPS	90,000	4.4
3	1	JSB-36RMT	TITAN 36", SALAMANDER BROILER, RANGE MOUNT	35,000	N/A
4	1	JTRH-1FHT, SIG	TITAN 18", 18" FRENCH HOT TOP, OPEN CABINET BASE	30,000	N/A

REVISIONS					
REV	DESCRIPTION	ECN	BY	DATE	APPROVED
A	INITIAL DRAWING PER REQUEST	XXX	ECS	11.17.23	
B	REVISED DRAWING PER REQUEST	XXX	ECS	12.05.23	
C	REVISED DRAWING PER REQUEST	XXX	ECS	12.21.23	
D	REVISED DRAWING PER REQUEST	XXX	ECS	01.11.24	
E	REVISED DRAWING PER REQUEST	XXX	ECS	07.29.24	
F	REVISED DRAWING PER REQUEST	XXX	ECS	08.05.24	
G	REVISED DRAWING PER REQUEST	XXX	ECS	09.06.24	
H	REVISED DRAWING PER REQUEST	XXX	ECS	11.04.24	
J	REVISED DRAWING PER REQUEST	XXX	ECS	11.13.24	
CHANGES TO DRAWING MAY RESULT IN CHANGES TO DELIVERY DATE & COST					

