

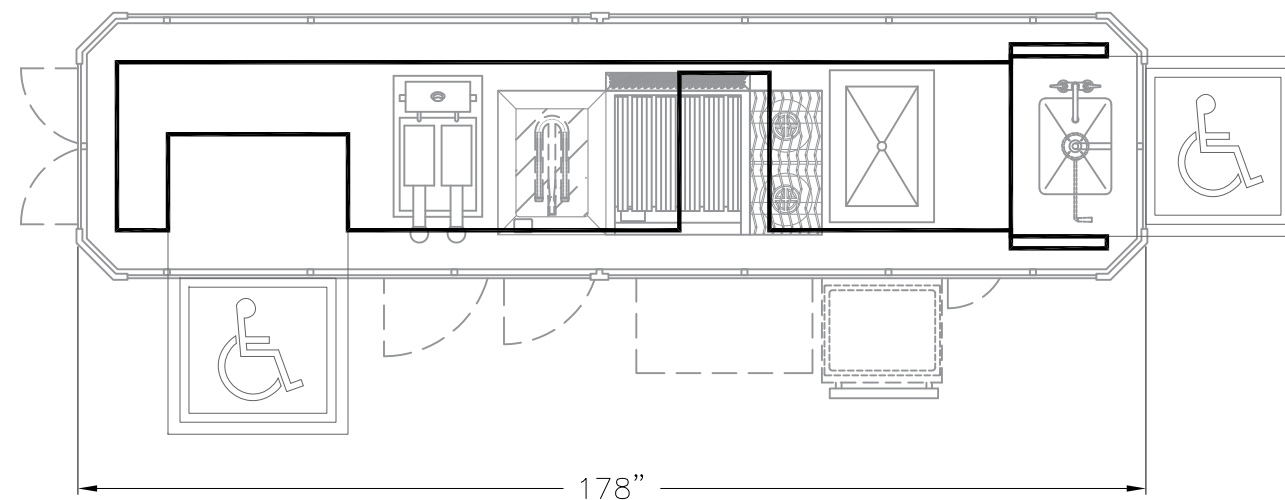
THIS DRAWING IS A CONCEPTUAL LAYOUT, SUBJECT TO CHANGES
AS THE FINAL MANUFACTURING PARTS ARE CREATED.

REVISIONS					
REV	DESCRIPTION	ECN	BY	DATE	APPROVED
A	INITIAL DRAWING PER REQUEST	XXX	ECS	01.08.24	
B	REVISED DRAWING PER REQUEST	XXX	ECS	01.16.24	
C	REVISED DRAWING PER REQUEST	XXX	ECS	01.31.24	
CHANGES TO DRAWING MAY RESULT IN CHANGES TO DELIVERY DATE & COST					

ALL GAS REGULATORS LARGER THAN 3/4" ARE TO BE
INSTALLED IN A HORIZONTAL FASHION WITH THE TOP
ORIENTED UPWARDS AS PER MANUFACTURER
SPECIFICATIONS. ALL GAS PRESSURE REGULATORS ARE
SHIPPED LOOSE & WILL NEED TO BE INSTALLED BY
CERTIFIED PLUMBER - LOCAL CODE PREVAILING

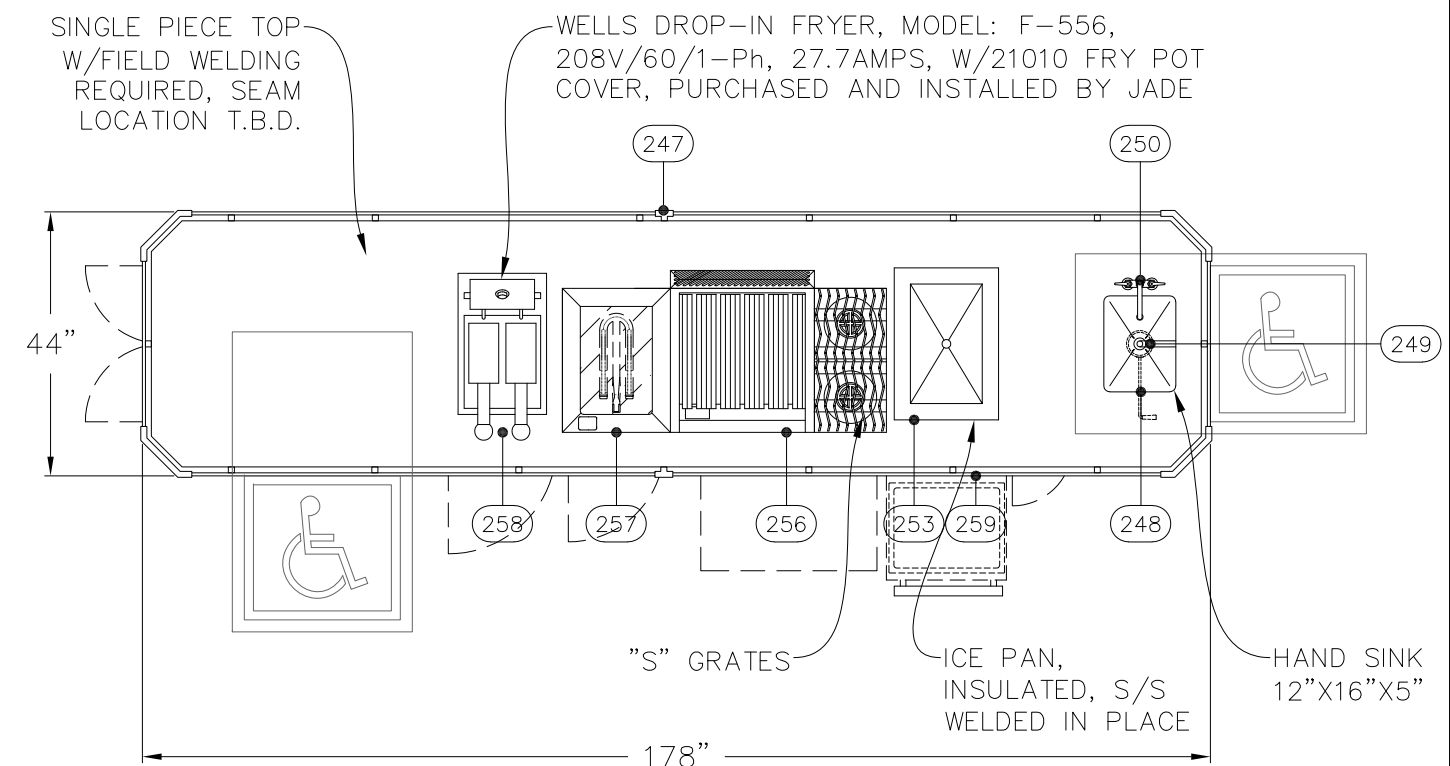
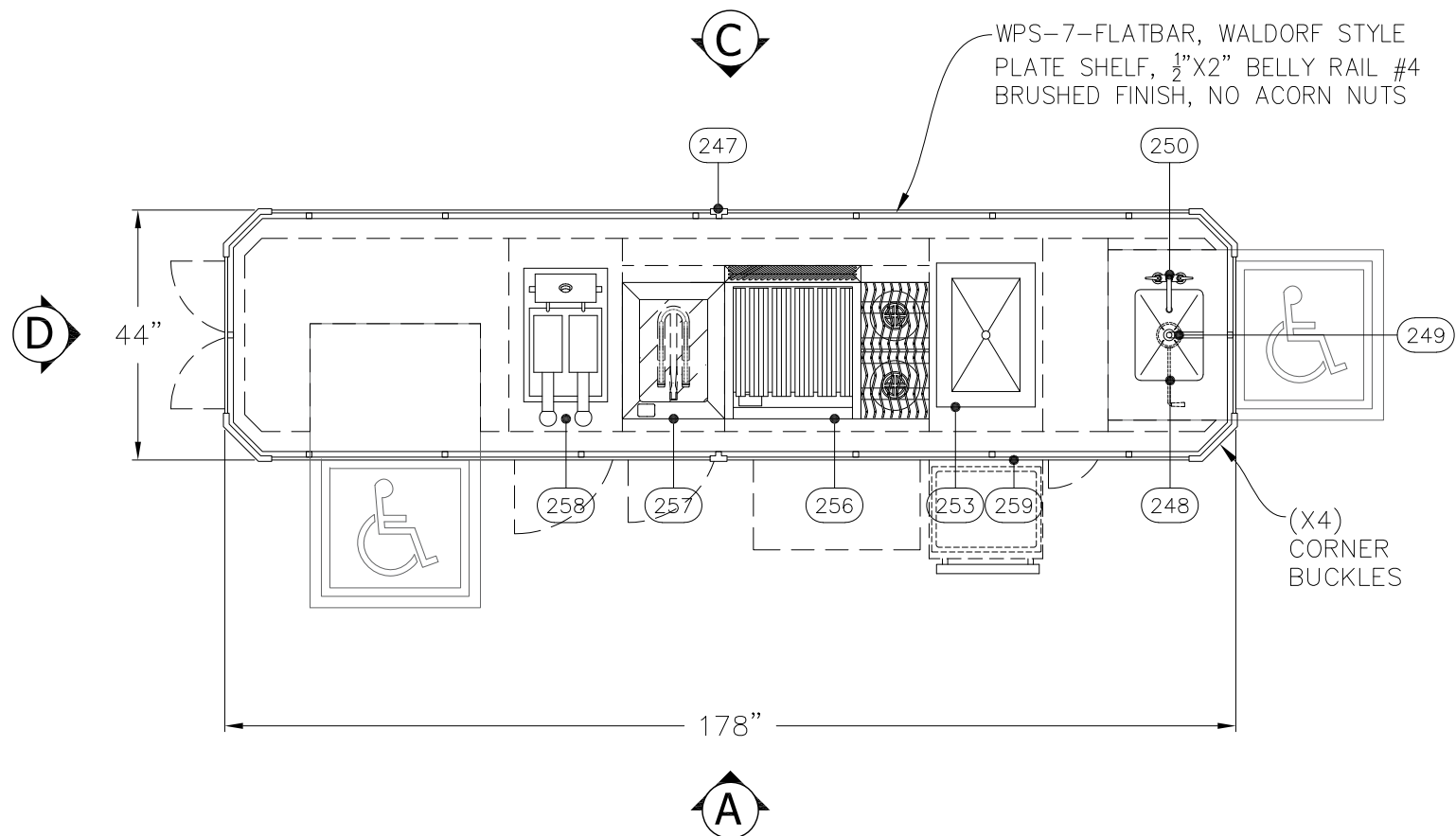
SHIPPING INSTRUCTIONS

ALL UNITS TO SHIP INDIVIDUALLY.
ALL RE-ASSEMBLY AND UTILITIES RE-CONNECTIONS
ARE TO BE COMPLETED BY THE KEC/GC.








PLAN VIEW WITH CURB BASE LOCATION

MATERIALS:
WORKTOP: 12 GAUGE STAINLESS STEEL
CABINETS/BASE: COMBINATION OF 14 & 16 GAUGE
STAINLESS STEEL
CURB: 12 GAUGE STAINLESS STEEL



PLAN VIEW WITHOUT BODY

MIN 6" CLEARANCE
ABOVE FLUE PEDESTALS

1.  REGULATOR AND GAS CONNECTION
 ELECTRICAL CONNECTION
 DRAIN
 REFRIGERATION
 WATER
2. GAS SHUT-OFF VALVES AND CONNECTIONS SUPPLIED BY OTHERS.
3. ALL ELECTRICAL WORK (INSTALLATIONS AND CONNECTIONS)
 MUST BE PROVIDED BY OTHERS (BY CERTIFIED ELECTRICIAN)



UNLESS OTHERWISE NOTED DIMENSIONS ARE IN INCHES
AND TOLERANCES: .XX±.125 .XX±.03 .XXX±.015. ANGLES ±1°

MATERIAL	DRAWN	ECS	01.08.24
	CHECKED		
	APPROVED		

DESC	Colton HS Culinary Instructor Suite		
FOR			
SIZE B	DWG NO	24014C	
SCALE	3/8" = 1'-0"	SHEET	1 OF 5

THIS DRAWING IS THE PROPERTY OF JADE RANGE LLC NO PART OF THIS DOCUMENT MAY BE COPIED OR USED WITHOUT THE WRITTEN PERMISSION.		ITEM		QTY		MODEL #		DESCRIPTION		BTU/HR		AMP		REVISIONS											
		247		1		ISLAND SUITE		CUSTOM WALDORF ISLAND SUITE		N/A		N/A		REV		DESCRIPTION		ECN		BY		DATE		APPROVED	
THIS DRAWING IS A CONCEPTUAL LAYOUT, SUBJECT TO CHANGES AS THE FINAL MANUFACTURING PARTS ARE CREATED.		248		1		HAND SINK		CUSTOM HAND SINK		N/A		N/A		A		INITIAL DRAWING PER REQUEST		XXX		ECS		01.08.24			
		249		1		B-3952-01		T&S, DRAIN, LEVER WASTE		N/A		N/A		B		REVISED DRAWING PER REQUEST		XXX		ECS		01.16.24			
		250		1		B-0325		T&S, FAUCET, DECK MOUNT		N/A		N/A		C		REVISED DRAWING PER REQUEST		XXX		ECS		01.31.24			
		253		1		ICP-100		WELLS, COLD WELL, DROP-IN		N/A		N/A		CHANGES TO DRAWING MAY RESULT IN CHANGES TO DELIVERY DATE & COST											
		256		1		JBR-2-24B-36C		BISTRO 36", (2) 12" OPEN BURNERS, 24" CHARBROILER, CONVECTION OVEN BASE, 120V/60/1-Ph		150,000		4.4													
		257		1		JBR-18IP		BISTRO 18", SPANISH STYLE PLANCHA, CABINET BASE W/DOOR		17,500		N/A													
		258		1		F-556		WELLS, DROP-IN FRYER, 208V/60/1-Ph		N/A		27.7													
		259		1		DRAWER SET		CUSTOM DRAWERS		N/A		N/A													

THIS DRAWING IS THE PROPERTY OF JADE RANGE LLC NO PART OF THIS DOCUMENT MAY BE COPIED OR USED WITHOUT THE WRITTEN PERMISSION.

THIS DRAWING IS A CONCEPTUAL LAYOUT, SUBJECT TO CHANGES AS THE FINAL MANUFACTURING PARTS ARE CREATED.


REVISIONS					
REV	DESCRIPTION	ECN	BY	DATE	APPROVED
A	INITIAL DRAWING PER REQUEST	XXX	ECS	01.08.24	
B	REVISED DRAWING PER REQUEST	XXX	ECS	01.16.24	
C	REVISED DRAWING PER REQUEST	XXX	ECS	01.31.24	
CHANGES TO DRAWING MAY RESULT IN CHANGES TO DELIVERY DATE & COST					


QTY	MODEL #	DESCRIPTION	CIRCUIT BREAKER		CIRCUIT	CONNECTED LOAD (A)				CIRCUIT	CIRCUIT BREAKER		DESCRIPTION	MODEL #	QTY
			POLE	SIZE		L1		L2			POLE	SIZE			
1	F-556	WELLS, DROP-IN FRYER, 208V/60/1-Ph	2	30	1	13.85		4.4		2	1	15	BISTRO 36", (2) 12" OPEN BURNERS, 24"CHARBROILER, CONVECTION OVEN BASE, 120V/60/1-Ph	JBR-2-24B-36C	1
					1				13.85	4					
						13.85	0	4.4	13.85						
		LINE SUB TOTALS:				13.85		18.25							
		TOTALS:				32.1									
LOAD CENTER: VOLTAGE: 120/208V PHASES: 1 PANEL SIZE (AMPERES) 40A PANEL SIZE MINIMUM (CIRCUITS): 2 CONNECTIONS															
		L2 - L1	4.4												

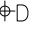
MIN 6" CLEARANCE
ABOVE FLUE PEDESTALS


GAS TYPE:	
ELEVATION:	
TO BE SPECIFIED BEFORE MFG.	


PROJECT MANAGER: JOSHUA HORIKAWA

1.  REGULATOR AND GAS CONNECTION

 ELECTRICAL CONNECTION

 DRAIN

 REFRIGERATION

 WATER

2. GAS SHUT-OFF VALVES AND CONNECTIONS SUPPLIED BY OTHERS.

3. ALL ELECTRICAL WORK (INSTALLATIONS AND CONNECTIONS) MUST BE PROVIDED BY OTHERS (BY CERTIFIED ELECTRICIAN)



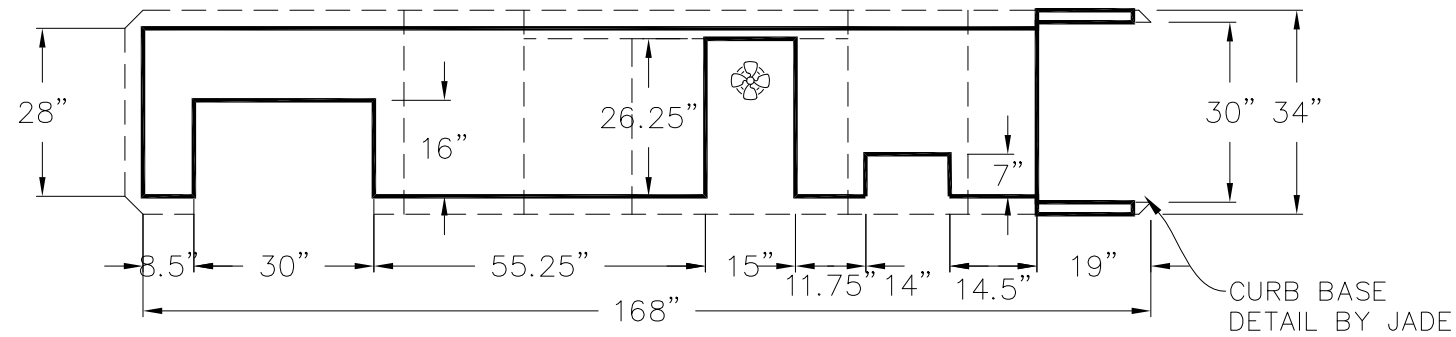
JADE RANGE LLC
2650 ORBITER ST.
BREA, CA 92821
-A MIDDLEBY CO.

UNLESS OTHERWISE NOTED DIMENSIONS ARE IN INCHES AND TOLERANCES: .X±.125 .XX±.03 .XXX±.015. ANGLES ±1°			
MATERIAL	DRAWN	ECS	01.08.24
	CHECKED		
FINISH	APPROVED		

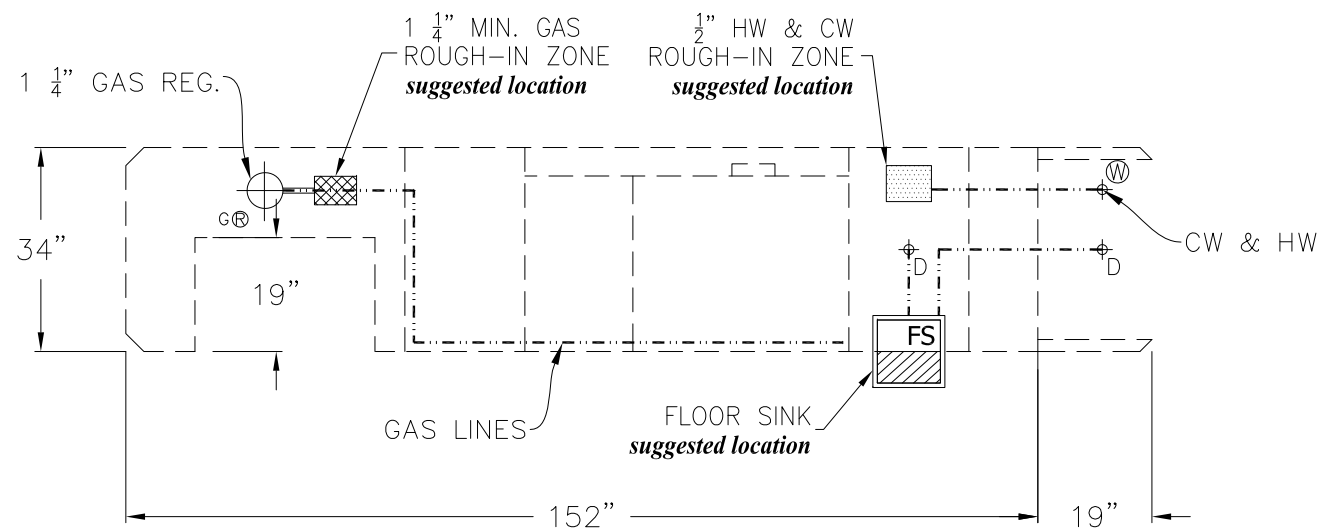
DESC		Colton HS Culinary Instructor Suite			
FOR					
SIZE	B	DWG NO		24014C	
SCALE		3/8" = 1'-0"		SHEET 3 OF 5	

THIS DRAWING IS A CONCEPTUAL LAYOUT, SUBJECT TO CHANGES
AS THE FINAL MANUFACTURING PARTS ARE CREATED.

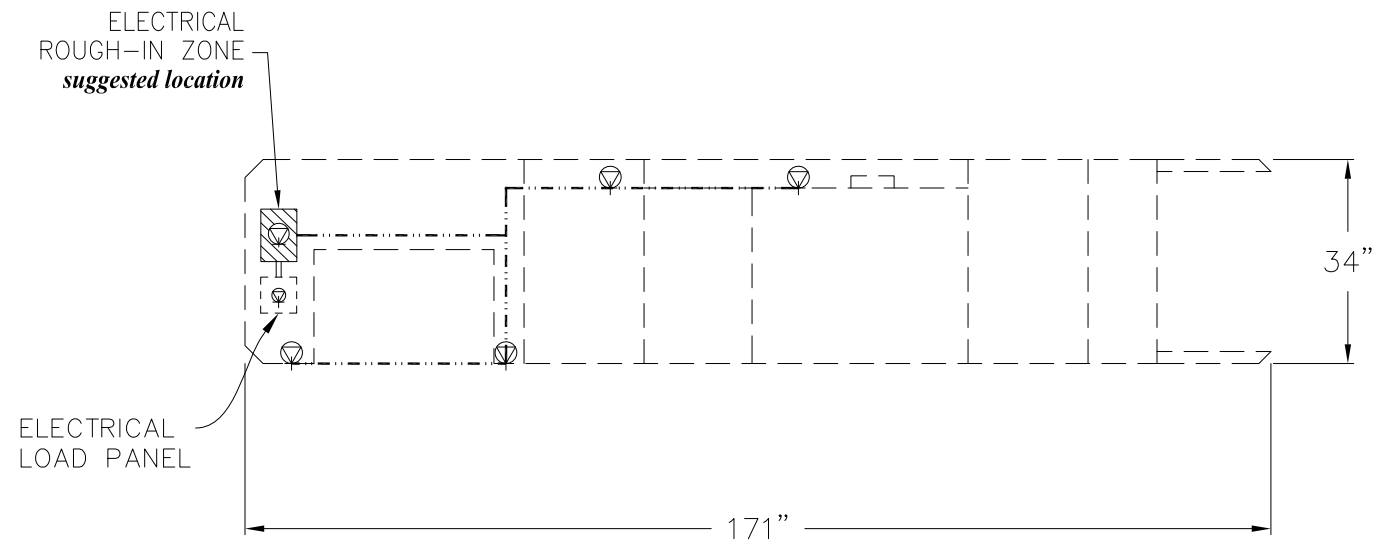
REVISIONS						
REV	DESCRIPTION	ECN	BY	DATE	APPROVED	
A	INITIAL DRAWING PER REQUEST	XXX	ECS	01.08.24		
B	REVISED DRAWING PER REQUEST	XXX	ECS	01.16.24		
C	REVISED DRAWING PER REQUEST	XXX	ECS	01.31.24		
CHANGES TO DRAWING MAY RESULT IN CHANGES TO DELIVERY DATE & COST						



CURB PERIMETER DETAIL








EQUIPMET BODY CONNECTIONS GAS, WATER & DRAIN



EQUIPMET BODY CONNECTION ELECTRICAL

MIN 6" CLEARANCE ABOVE FLUE PEDESTALS	
GAS TYPE:	
ELEVATION:	
TO BE SPECIFIED BEFORE MFG.	

PROJECT MANAGER: JOSHUA HORIKAWA

1.  REGULATOR AND GAS CONNECTION
 ELECTRICAL CONNECTION
 DRAIN
 REFRIGERATION
 WATER
2. GAS SHUT-OFF VALVES AND CONNECTIONS SUPPLIED BY OTHERS.
3. ALL ELECTRICAL WORK (INSTALLATIONS AND CONNECTIONS)
 MUST BE PROVIDED BY OTHERS (BY CERTIFIED ELECTRICIAN)



UNLESS OTHERWISE NOTED DIMENSIONS ARE IN INCHES
AND TOLERANCES: .X \pm .125 .XX \pm .03 .XXX \pm .015. ANGLES \pm 1°

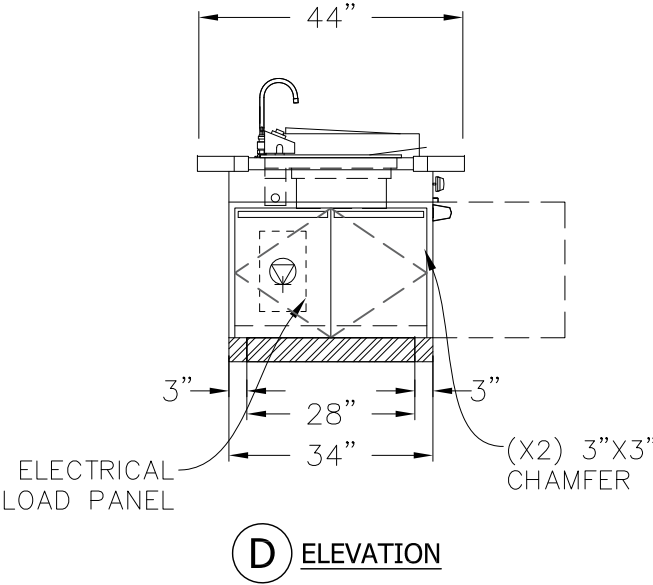
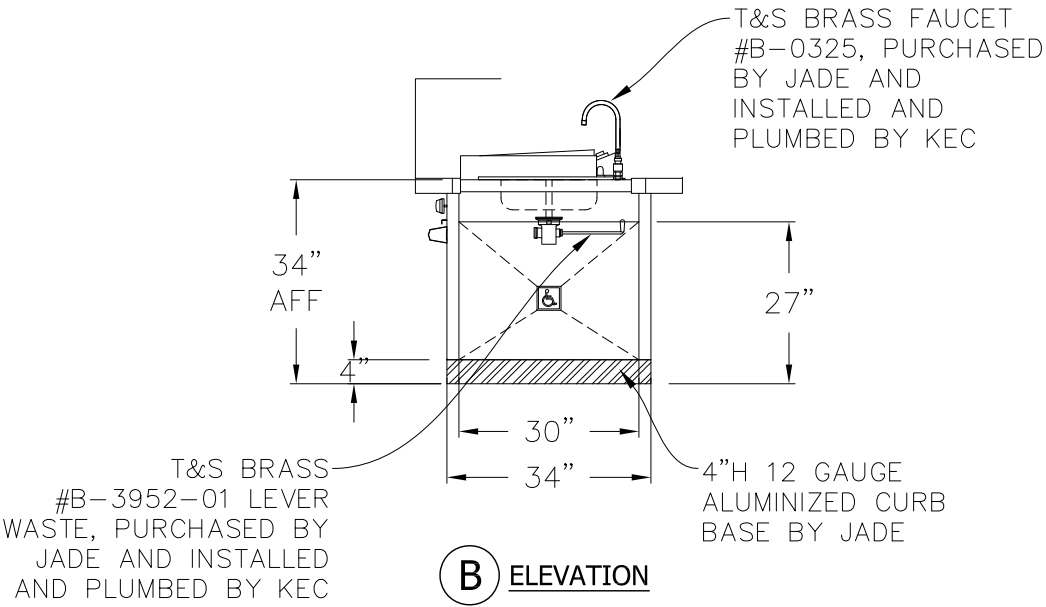
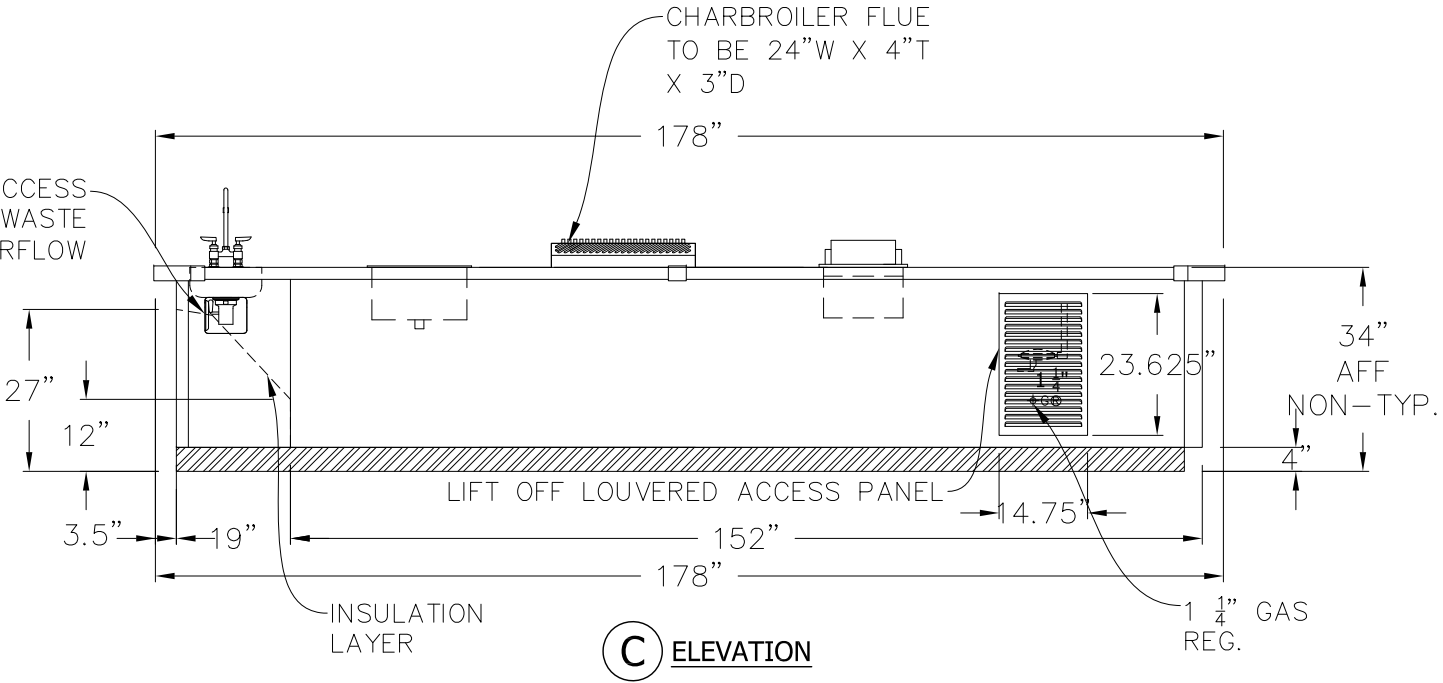
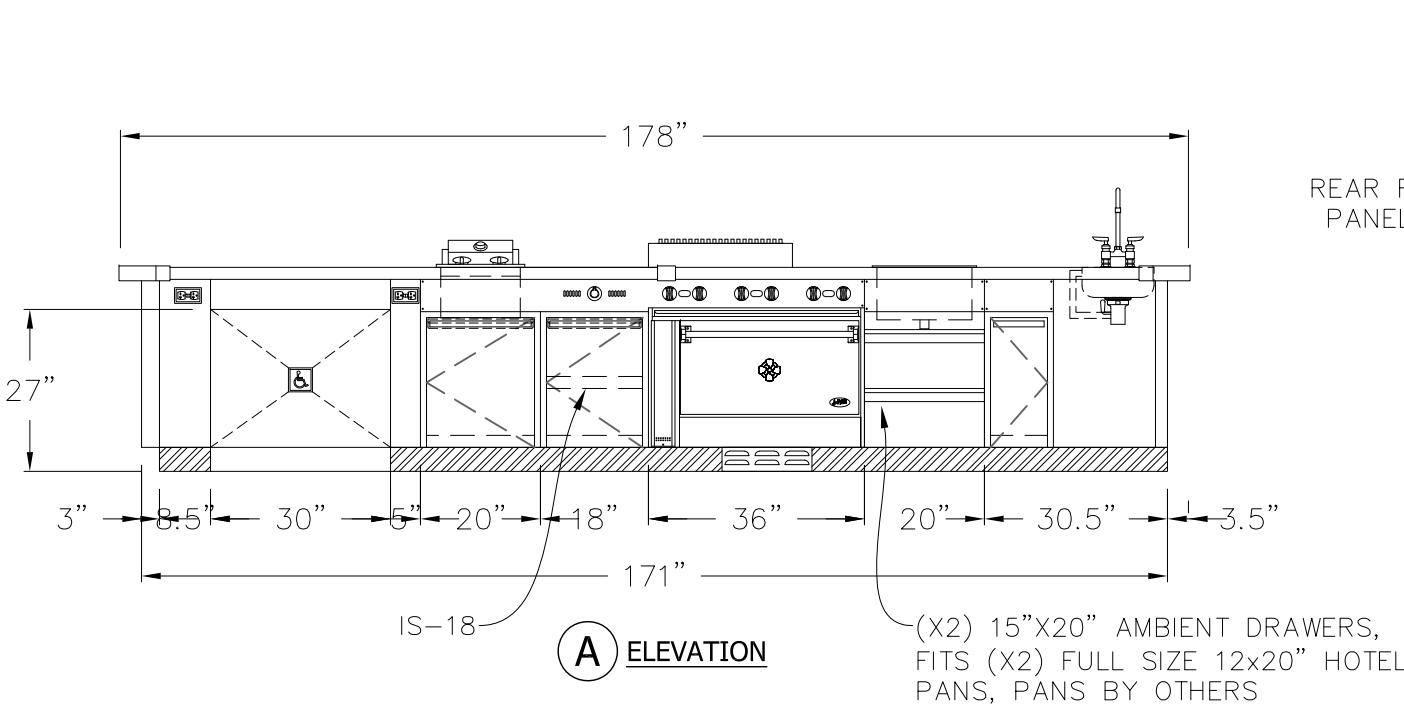
MATERIAL	DRAWN	ECS	01.08.24
	CHECKED		
FINISH	APPROVED		

DESC	Colton HS Culinary Instructor Suite		
FOR			
SIZE B	DWG NO	24014C	
SCALE	3/8" = 1'-0"	SHEET	4 OF 5

THIS DRAWING IS THE PROPERTY OF JADE RANGE LLC NO PART OF THIS DOCUMENT MAY BE COPIED OR USED WITHOUT THE WRITTEN PERMISSION.

THIS DRAWING IS A CONCEPTUAL LAYOUT, SUBJECT TO CHANGES AS THE FINAL MANUFACTURING PARTS ARE CREATED.

REVISIONS					
REV	DESCRIPTION	ECN	BY	DATE	APPROVED
A	INITIAL DRAWING PER REQUEST	XXX	ECS	01.08.24	
B	REVISED DRAWING PER REQUEST	XXX	ECS	01.16.24	
C	REVISED DRAWING PER REQUEST	XXX	ECS	01.31.24	
CHANGES TO DRAWING MAY RESULT IN CHANGES TO DELIVERY DATE & COST					



MIN 6" CLEARANCE
ABOVE FLUE PEDESTALS

GAS TYPE:	
ELEVATION:	
TO BE SPECIFIED BEFORE MFG.	

PROJECT MANAGER: JOSHUA HORIKAWA

- 1. REGULATOR AND GAS CONNECTION
- ELECTRICAL CONNECTION
- DRAIN
- REFRIGERATION
- WATER
- 2. GAS SHUT-OFF VALVES AND CONNECTIONS SUPPLIED BY OTHERS.
- 3. ALL ELECTRICAL WORK (INSTALLATIONS AND CONNECTIONS) MUST BE PROVIDED BY OTHERS (BY CERTIFIED ELECTRICIAN)



JADE
JADE RANGE LLC
2650 ORBITER ST.
BREA, CA 92821
-A MIDDLEBY CO.

UNLESS OTHERWISE NOTED DIMENSIONS ARE IN INCHES AND TOLERANCES: .X±.125 .XX±.03 .XXX±.015. ANGLES ±1°

MATERIAL	DRAWN	ECS	01.08.24
FINISH	CHECKED		
	APPROVED		

DESC		Colton HS Culinary Instructor Suite	
FOR		SIZE DWG NO	
B		24014C	
SCALE 3/8" = 1'-0"		SHEET 5 OF 5	