

THIS DRAWING IS THE PROPERTY OF JADE RANGE LLC NO PART OF THIS DOCUMENT MAY BE COPIED OR USED WITHOUT THE WRITTEN PERMISSION.

THIS DRAWING IS A CONCEPTUAL LAYOUT, SUBJECT TO CHANGES AS THE FINAL MANUFACTURING PARTS ARE CREATED.

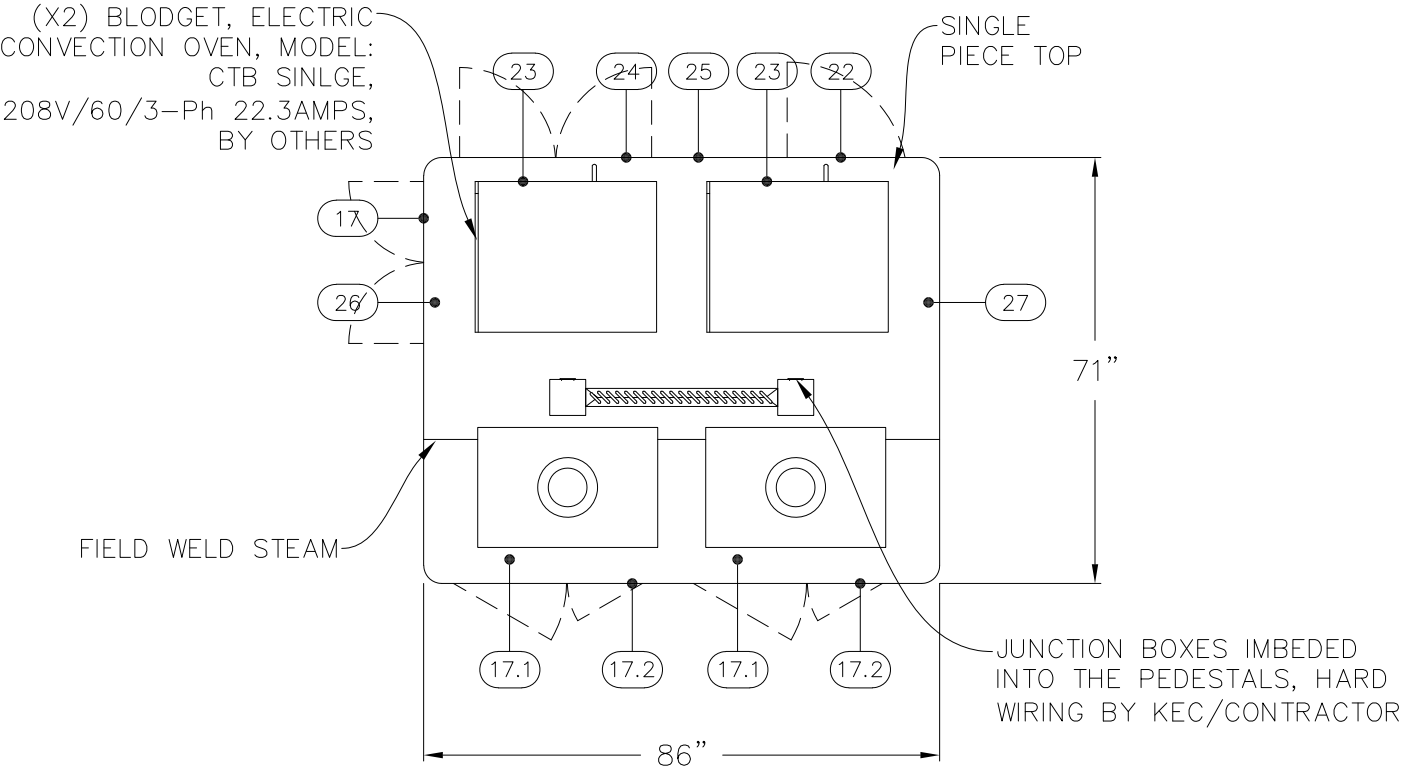
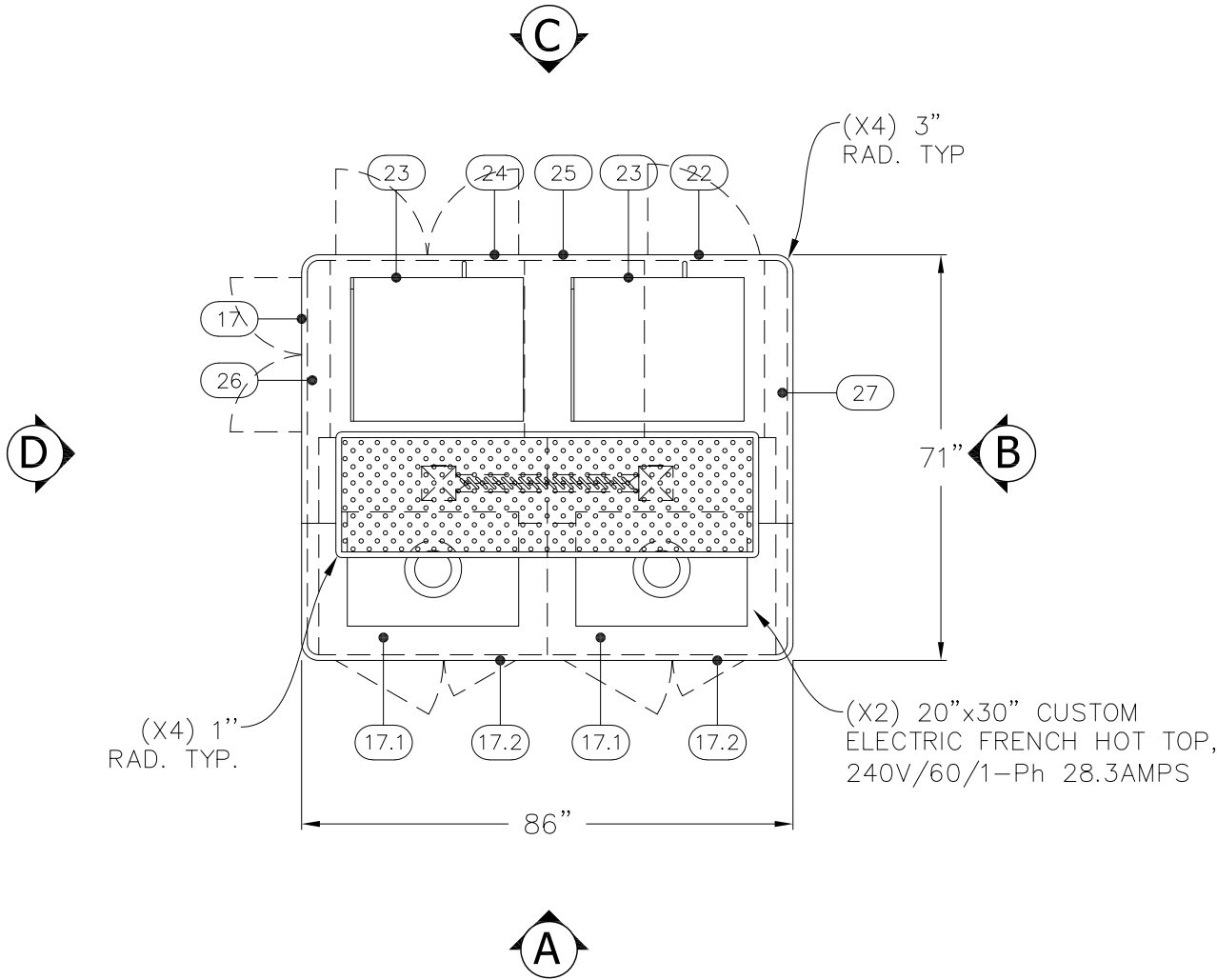
**SHIPPING INSTRUCTIONS**  
CUSTOMER TO ADVISE ABOUT SHIPPING SECTIONS  
PRIOR TO SHIPMENT. ANY ITEMS SHIPPED  
DISASSEMBLED FROM ORIGINAL DESIGN INTENT  
WILL NEED TO BE REASSEMBLED BY THE KEC AT  
TIME OF INSTALLATION.

ITEM	QTY	MODEL #	DESCRIPTION	kW/HR	AMP
17	1	ISLAND SUITE	CUSTOM WALDORF ISLAND SUITE	N/A	N/A
17.1	2	ELECTRIC FRENCH	CUSTOM TITAN 36", ELECTRIC FRENCH HOT TOP, 240V/60/1-Ph	6.8	28.3
17.2	2	JTPR-38, SIG, MOD	MODIFIED TITAN 38" SPREADER CABINET, OPEN CABINET BASE	N/A	N/A
	2	TVES-10SC	SOUTHBEND, ELECTRIC CONVECTION OVEN, 208V/60/3-Ph	8.4	23.4
22	1	CHV7-04HP	WINSTON, COOK & HOLD CABINET, 208V/60/1-Ph BY OTHERS	2.9	14.0
23	2	CTB SINGLE	BLODGET, ELECTRIC CONVECTION OVEN, 208V/60/3-Ph BY OTHERS	8.0	22.3
24	1	JTPR-34-SD, SIG	TITAN 34", SPREADER CABINET, CABINET BASE W/DOORS	N/A	N/A
25	1	JTPR-21, SIG	TITAN 21", SPREADER CABINET, CABINET BASE W/ PAN SLIDE KIT	N/A	N/A
26	1	END CAP	CUSTOM END CAP 1	N/A	N/A
27	1	END CAP	CUSTOM END CAP 2	N/A	N/A

REVISIONS					
REV	DESCRIPTION	ECN	BY	DATE	APPROVED
A	INITIAL DRAWING PER REQUEST	XXX	ECS	01.18.24	
B	REVISED DRAWING PER REQUEST	XXX	ECS	01.24.24	
C	REVISED DRAWING PER REQUEST	XXX	ECS	01.25.24	
D	REVISED DRAWING PER REQUEST	XXX	ECS	01.31.24	
E	REVISED DRAWING PER REQUEST	XXX	ECS	06.21.24	
F	REVISED DRAWING PER REQUEST	XXX	ECS	06.27.24	
G	REVISED DRAWING PER REQUEST	XXX	ECS	08.27.24	
CHANGES TO DRAWING MAY RESULT IN CHANGES TO DELIVERY DATE & COST					

SIGNATURE PACKAGE

TOTAL kW/HR: 42.1  
TOTAL AMPS:(208V/1-Ph) 14.0A  
TOTAL AMPS:(208V/3-Ph) 91.4A  
TOTAL AMPS: (240V/1-Ph) 28.4A



PLAN VIEW WITHOUT OVERSHELF

MIN 6" CLEARANCE  
ABOVE FLUE PEDESTALS

GAS TYPE:	
ELEVATION:	
TO BE SPECIFIED BEFORE MFG.	

PROJECT MANAGER: SERGIO FORCATTO  
KURT EICKMEYER  
JOSHUA HORIKAWA

- 1. REGULATOR AND GAS CONNECTION
- 2. GAS SHUT-OFF VALVES AND CONNECTIONS SUPPLIED BY OTHERS.
- 3. ALL ELECTRICAL WORK (INSTALLATIONS AND CONNECTIONS) MUST BE PROVIDED BY OTHERS (BY CERTIFIED ELECTRICIAN)

JADE RANGE LLC  
2650 ORBITER ST.  
BREA, CA 92821  
-A MIDDLEBY CO.

UNLESS OTHERWISE NOTED DIMENSIONS ARE IN INCHES AND TOLERANCES: .X±.125 .XX±.03 .XXX±.015. ANGLES ±1°

MATERIAL	DRAWN	ECS	01.18.24
FINISH	CHECKED		
	APPROVED		

DESC		550 Fifth Suite-Safra			
FOR		24036G			
SCALE		3/8" = 1'-0"		SHEET 1 OF 6	

THIS DRAWING IS THE PROPERTY OF JADE RANGE LLC NO PART OF THIS DOCUMENT MAY BE COPIED OR USED WITHOUT THE WRITTEN PERMISSION.

THIS DRAWING IS A CONCEPTUAL LAYOUT, SUBJECT TO CHANGES AS THE FINAL MANUFACTURING PARTS ARE CREATED.

REVISIONS					
REV	DESCRIPTION	ECN	BY	DATE	APPROVED
A	INITIAL DRAWING PER REQUEST	XXX	ECS	01.18.24	
B	REVISED DRAWING PER REQUEST	XXX	ECS	01.24.24	
C	REVISED DRAWING PER REQUEST	XXX	ECS	01.25.24	
D	REVISED DRAWING PER REQUEST	XXX	ECS	01.31.24	
E	REVISED DRAWING PER REQUEST	XXX	ECS	06.21.24	
F	REVISED DRAWING PER REQUEST	XXX	ECS	06.27.24	
G	REVISED DRAWING PER REQUEST	XXX	ECS	08.27.24	
CHANGES TO DRAWING MAY RESULT IN CHANGES TO DELIVERY DATE & COST					



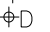



NOTES:


- All electrical wires, conduit and pig tails are provided by Jade and are long enough to reach the main load panel, which is also provided by Jade. The connection of the wires, conduit and pigtails, which are provided by Jade, from each component to the load panel is to be completed by the KEC or contract electrician. The KEC or contract electrician is to make the final connection from the load panel to the incoming main line.
- All gas manifolds and connection of the gas manifolds in between each unit are provided by Jade. Those connections to the main manifold from each Jade unit is to be completed by the KEC or plumbing contractor. The KEC or plumbing contractor is to make the final connection from the main manifold to the gas pressure regulator located in the specified location per drawing and then to make the connections to the main incoming gas line.
- All convenience outlets to be commercial grade GFCI breakers and outlets.
- All water connections and drain connections are to be completed by the KEC or contract plumber. Jade provides no water or drain connections, only fixtures and devices that require water and / or drains. The KEC or contract plumber is to complete all the water lines to each water connection and each drain connection to the appropriate floor sink/drain.
- All units ship assembled unless otherwise specified. Jade Range ships salamanders and cheesemelters range mounted and line-ups & suites ship in as large of sections as possible for easier assembly onsite at the time of install.

MIN 6" CLEARANCE  
ABOVE FLUE PEDESTALS

GAS TYPE:	
ELEVATION:	
TO BE SPECIFIED BEFORE MFG.	

PROJECT MANAGER: SERGIO FORCATTO  
KURT EICKMEYER  
JOSHUA HORIKAWA

1.   REGULATOR AND GAS CONNECTION
-  ELECTRICAL CONNECTION
2.  DRAIN
3.  REFRIGERATION
-  WATER
2. GAS SHUT-OFF VALVES AND CONNECTIONS SUPPLIED BY OTHERS.
3. ALL ELECTRICAL WORK (INSTALLATIONS AND CONNECTIONS) MUST BE PROVIDED BY OTHERS (BY CERTIFIED ELECTRICIAN)

 <div>JADE RANGE LLC 2650 ORBITER ST. BREA, CA 92821 -A MIDDLEBY CO.</div>	UNLESS OTHERWISE NOTED DIMENSIONS ARE IN INCHES AND TOLERANCES: .X±.125 .XX±.03 .XXX±.015. ANGLES ±1°				DESC <b>550 Fifth Suite-Safra</b>	
	MATERIAL	DRAWN	ECS	01.18.24	FOR	
	FINISH	CHECKED			SIZE B	DWG NO <b>24036G</b>
		APPROVED			SCALE 3/8" = 1'-0"	SHEET 2 OF 6

THIS DRAWING IS THE PROPERTY OF JADE RANGE LLC NO PART OF THIS DOCUMENT MAY BE COPIED OR USED WITHOUT THE WRITTEN PERMISSION.

THIS DRAWING IS A CONCEPTUAL LAYOUT, SUBJECT TO CHANGES AS THE FINAL MANUFACTURING PARTS ARE CREATED.

REVISIONS					
REV	DESCRIPTION	ECN	BY	DATE	APPROVED
A	INITIAL DRAWING PER REQUEST	XXX	ECS	01.18.24	
B	REVISED DRAWING PER REQUEST	XXX	ECS	01.24.24	
C	REVISED DRAWING PER REQUEST	XXX	ECS	01.25.24	
D	REVISED DRAWING PER REQUEST	XXX	ECS	01.31.24	
E	REVISED DRAWING PER REQUEST	XXX	ECS	06.21.24	
F	REVISED DRAWING PER REQUEST	XXX	ECS	06.27.24	
G	REVISED DRAWING PER REQUEST	XXX	ECS	08.27.24	
CHANGES TO DRAWING MAY RESULT IN CHANGES TO DELIVERY DATE & COST					

Load Center Panel Balance Schedule

Project Name: 550 Fifth Suite - Safra  
Project Number: 24036-E Panel 1

Model	Description	Circuit Breaker		Circuit	Phase Load (kW)						Circuit	Circuit Breaker		Description	Model
		Pole	Size		A	B	C	C	B	A		Size	Pole		
TVES-10SC	Southbend Convection Oven 208V/3ph 8.4kW	3	30	1	2.80					2.80	2	30	3	Southbend Convection Oven 208V/3ph 8.4kW	TVES-10SC
				3		2.80			2.80		4				
				5			2.80	2.80			6				
CTB Single	Blodget Convection Oven 208V/3ph 8.0kW	3	30	7	2.67					2.67	8	30	3	Blodget Convection Oven 208V/3ph 8.0kW	CTB Single
				9		2.67			2.67		10				
				11			2.67	2.67			12				
Phase Sub-Totals					5.47	5.47	5.47	5.47	5.47	5.47					
<div>Load Center: Voltage: 208Y/120VACPhase:3Panel Size (Amperes): 125</div>															

PHASE SUB-TOTALS (kW)					
AΦ	BΦ	CΦ	CΦ	BΦ	AΦ
5.47	5.47	5.47	5.47	5.47	5.47

Phase Load Totals (kW):	Phase A:	Phase B:	Phase C:	Total Load (kW):
	10.94	10.94	10.94	32.82
Amperes Per Phase	91.17	91.17	91.17	

Total Load	32.82		
Total Amps	91.17		
Demand Factor	80%	Number of Units	Demand Factor %
Demand Load	26.256	1	100
Demand Ampere	72.93	2	100
Additional Future Provision	10%	3	90
Final Demand Load	28.8816	4	80
Current	80.23	5	70
Risk Factor	1.25	6	65
Final Load	36.102		
Final Current	100.28		

MIN 6" CLEARANCE  
ABOVE FLUE PEDESTALS

GAS TYPE:	
ELEVATION:	
TO BE SPECIFIED BEFORE MFG.	

PROJECT MANAGER: SERGIO FORCATTO  
KURT EICKMEYER  
JOSHUA HORIKAWA

- 1.⚙️

REGULATOR AND GAS CONNECTION
- ⚡

ELECTRICAL CONNECTION
- ⚙️


DRAIN
- ❄️

REFRIGERATION
- 💧

WATER
2.

GAS SHUT-OFF VALVES AND CONNECTIONS SUPPLIED BY OTHERS.
3.

ALL ELECTRICAL WORK (INSTALLATIONS AND CONNECTIONS) MUST BE PROVIDED BY OTHERS (BY CERTIFIED ELECTRICIAN)



JADE  
JADE RANGE LLC  
2650 ORBITER ST.  
BREA, CA 92821  
-A MIDDLEBY CO.

UNLESS OTHERWISE NOTED DIMENSIONS ARE IN INCHES AND TOLERANCES: .X±.125 .XX±.03 .XXX±.015. ANGLES ±1°

MATERIAL

DRAWN

ECS

01.18.24

FINISH

CHECKED

APPROVED

DESC

550 Fifth Suite-Safra

FOR

SIZE

DWG NO

B24036G

SCALE

3/8" = 1'-0"

SHEET

3 OF 6

THIS DRAWING IS THE PROPERTY OF JADE RANGE LLC NO PART OF THIS DOCUMENT MAY BE COPIED OR USED WITHOUT THE WRITTEN PERMISSION.

THIS DRAWING IS A CONCEPTUAL LAYOUT, SUBJECT TO CHANGES AS THE FINAL MANUFACTURING PARTS ARE CREATED.

REVISIONS					
REV	DESCRIPTION	ECN	BY	DATE	APPROVED
A	INITIAL DRAWING PER REQUEST	XXX	ECS	01.18.24	
B	REVISED DRAWING PER REQUEST	XXX	ECS	01.24.24	
C	REVISED DRAWING PER REQUEST	XXX	ECS	01.25.24	
D	REVISED DRAWING PER REQUEST	XXX	ECS	01.31.24	
E	REVISED DRAWING PER REQUEST	XXX	ECS	06.21.24	
F	REVISED DRAWING PER REQUEST	XXX	ECS	06.27.24	
G	REVISED DRAWING PER REQUEST	XXX	ECS	08.27.24	
CHANGES TO DRAWING MAY RESULT IN CHANGES TO DELIVERY DATE & COST					

Load Center Panel Balance Schedule

Project Name: 550 Fifth Suite - Safra  
Project Number: 24036-G Panel 2

Date:9/5/2024

Model	Description	Circuit Breaker		Circuit	Phase Load (kW)						Circuit	Circuit Breaker		Description	Model
		Pole	Size		A	B	C	C	B	A		Size	Pole		
French Top	Custom Titan Electric French Top 208V/1ph 6.4kW	2	20	1	3.20						2				
				3		3.20			1.45		4	20	2	Winston Cook & Hold 208V/1ph 2.9kW	CHV7-04HP
French Top	Custom Titan Electric French Top 208V/1ph 6.4kW	2	20	5			3.20	1.45			6				
				7	3.20						8				
				9							10				
				11							12				
Phase Sub-Totals					6.40	3.20	3.20	1.45	1.45	0.00					
<div>Load Center: Voltage: 208Y/120VAC Phase:3 Panel Size (Amperes): 125</div>															

AΦ	BΦ	CΦ	CΦ	BΦ	AΦ
6.40	3.20	3.20	1.45	1.45	0.00

Phase Load Totals (kW):	Phase A:	Phase B:	Phase C:	Total Load (kW):
	6.40	4.65	4.65	15.70
Amperes Per Phase	53.33	38.75	38.75	

Total Load	15.70		
Total Amps	43.61		
Demand Factor	90%	Number of Units	Demand Factor %
Demand Load	14.13	1	100
Demand Ampere	39.25	2	100
Additional Future Provision	10%	3	90
Final Demand Load	15.543	4	80
Current	43.18	5	70
Risk Factor	1.25	6	65
Final Load	19.42875		
Final Current	53.97		

MIN 6” CLEARANCE  
ABOVE FLUE PEDESTALS

GAS TYPE:	
ELEVATION:	
TO BE SPECIFIED BEFORE MFG.	

PROJECT MANAGER: SERGIO FORCATTO  
KURT EICKMEYER  
JOSHUA HORIKAWA

- 1.⚙️

REGULATOR AND GAS CONNECTION

⚡

ELECTRICAL CONNECTION

🚰

DRAIN


❄️

REFRIGERATION

💧

WATER
2. GAS SHUT-OFF VALVES AND CONNECTIONS SUPPLIED BY OTHERS.

3. ALL ELECTRICAL WORK (INSTALLATIONS AND CONNECTIONS) MUST BE PROVIDED BY OTHERS (BY CERTIFIED ELECTRICIAN)



JADE RANGE LLC  
2650 ORBITER ST.  
BREA, CA 92821  
-A MIDDLEBY CO.

UNLESS OTHERWISE NOTED DIMENSIONS ARE IN INCHES AND TOLERANCES: .X±.125 .XX±.03 .XXX±.015. ANGLES ±1°

MATERIAL

DRAWN

ECS

01.18.24

CHECKED

APPROVED

FINISH

DESC

550 Fifth Suite-Safra

FOR

SIZE

DWG NO

24036G

SCALE

3/8” = 1’-0”

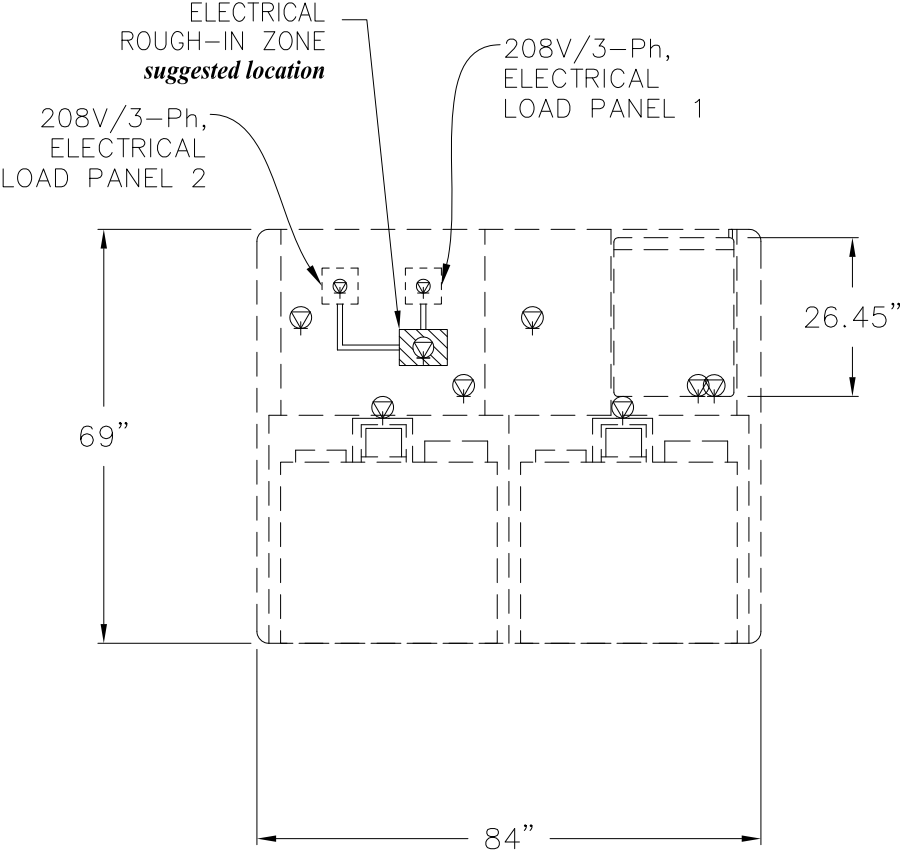
SHEET

4 OF 6

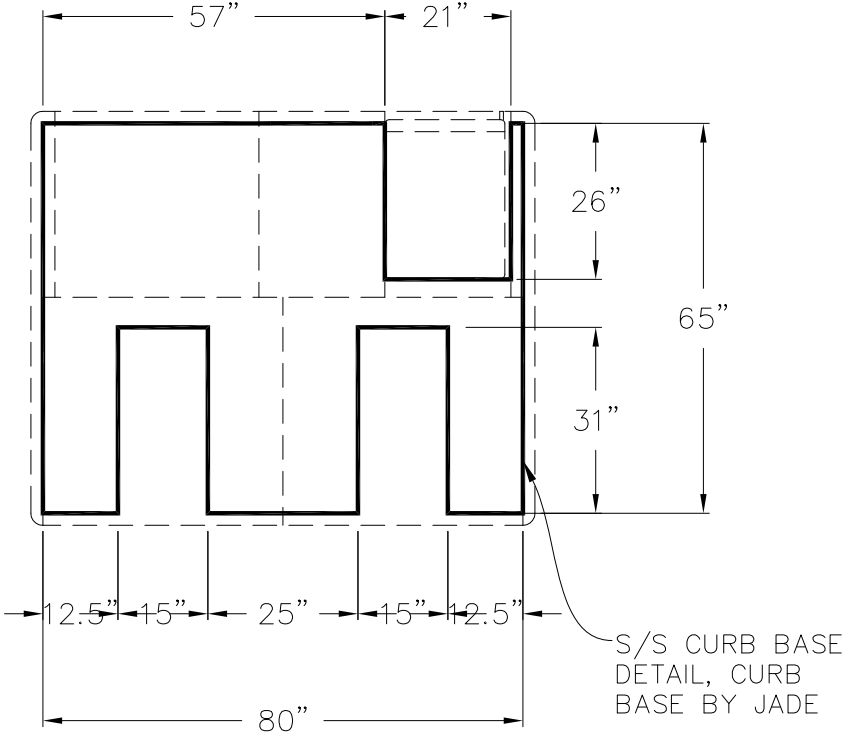
THIS DRAWING IS THE PROPERTY OF JADE RANGE LLC NO PART OF THIS DOCUMENT MAY BE COPIED OR USED WITHOUT THE WRITTEN PERMISSION.

THIS DRAWING IS A CONCEPTUAL LAYOUT, SUBJECT TO CHANGES AS THE FINAL MANUFACTURING PARTS ARE CREATED.

REVISIONS					
REV	DESCRIPTION	ECN	BY	DATE	APPROVED
A	INITIAL DRAWING PER REQUEST	XXX	ECS	01.18.24	
B	REVISED DRAWING PER REQUEST	XXX	ECS	01.24.24	
C	REVISED DRAWING PER REQUEST	XXX	ECS	01.25.24	
D	REVISED DRAWING PER REQUEST	XXX	ECS	01.31.24	
E	REVISED DRAWING PER REQUEST	XXX	ECS	06.21.24	
F	REVISED DRAWING PER REQUEST	XXX	ECS	06.27.24	
G	REVISED DRAWING PER REQUEST	XXX	ECS	08.27.24	
CHANGES TO DRAWING MAY RESULT IN CHANGES TO DELIVERY DATE & COST					



EQUIPMET BODY PERIMETER DETAIL





CURB BASE PERIMETER DETAIL

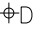
MIN 6" CLEARANCE  
ABOVE FLUE PEDESTALS


GAS TYPE:	
ELEVATION:	
TO BE SPECIFIED BEFORE MFG.	


PROJECT MANAGER: SERGIO FORCATTO  
KURT EICKMEYER  
JOSHUA HORIKAWA

1.  REGULATOR AND GAS CONNECTION

 ELECTRICAL CONNECTION

 DRAIN

 REFRIGERATION

 WATER
2. GAS SHUT-OFF VALVES AND CONNECTIONS SUPPLIED BY OTHERS.

3. ALL ELECTRICAL WORK (INSTALLATIONS AND CONNECTIONS) MUST BE PROVIDED BY OTHERS (BY CERTIFIED ELECTRICIAN)



JADE RANGE LLC  
2650 ORBITER ST.  
BREA, CA 92821  
-A MIDDLEBY CO.

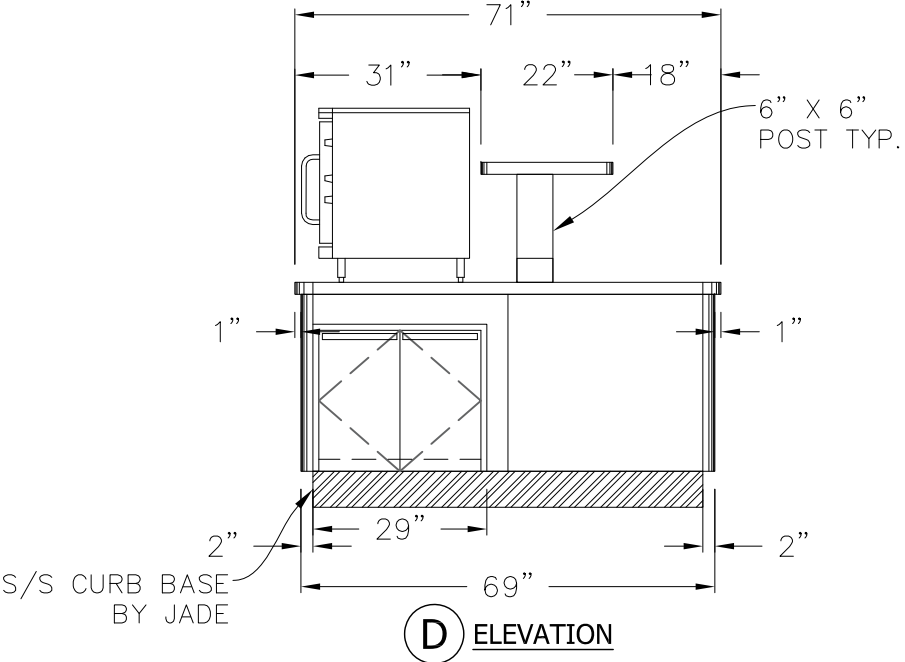
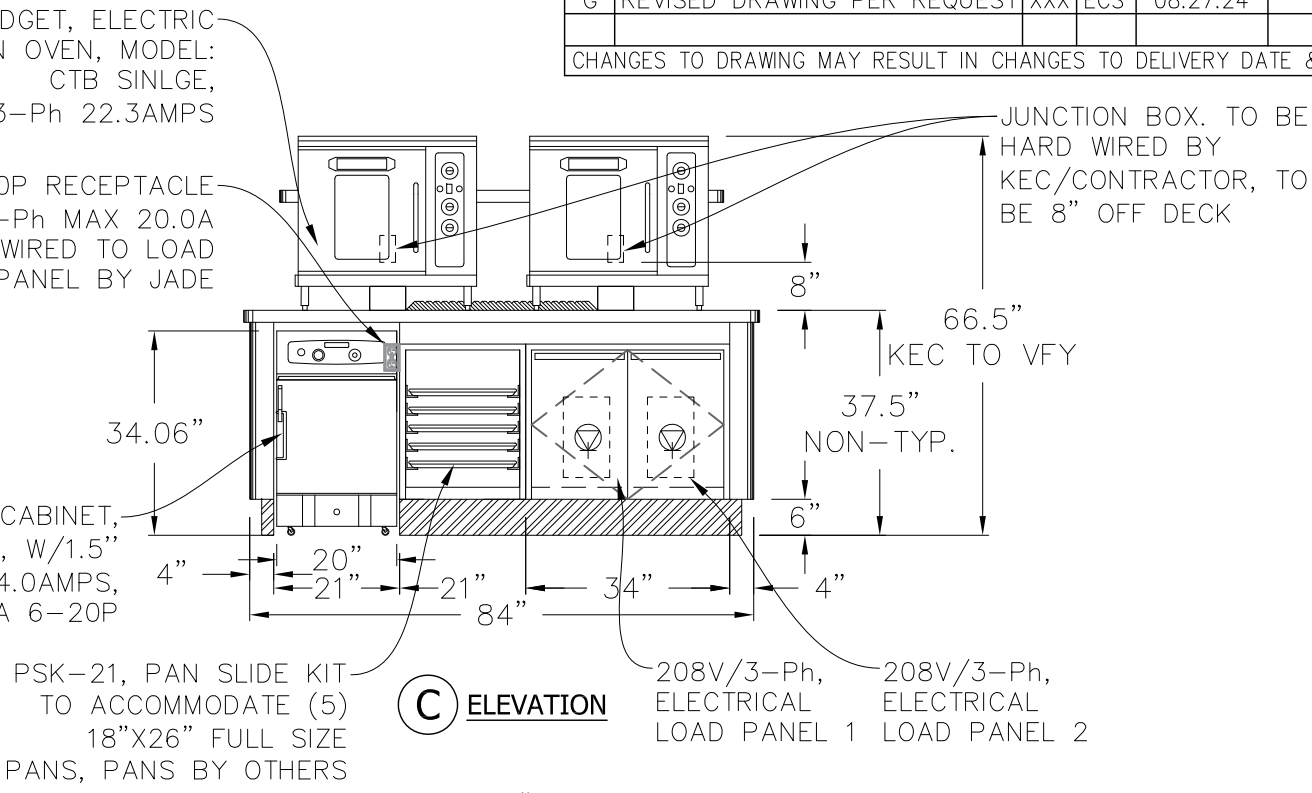
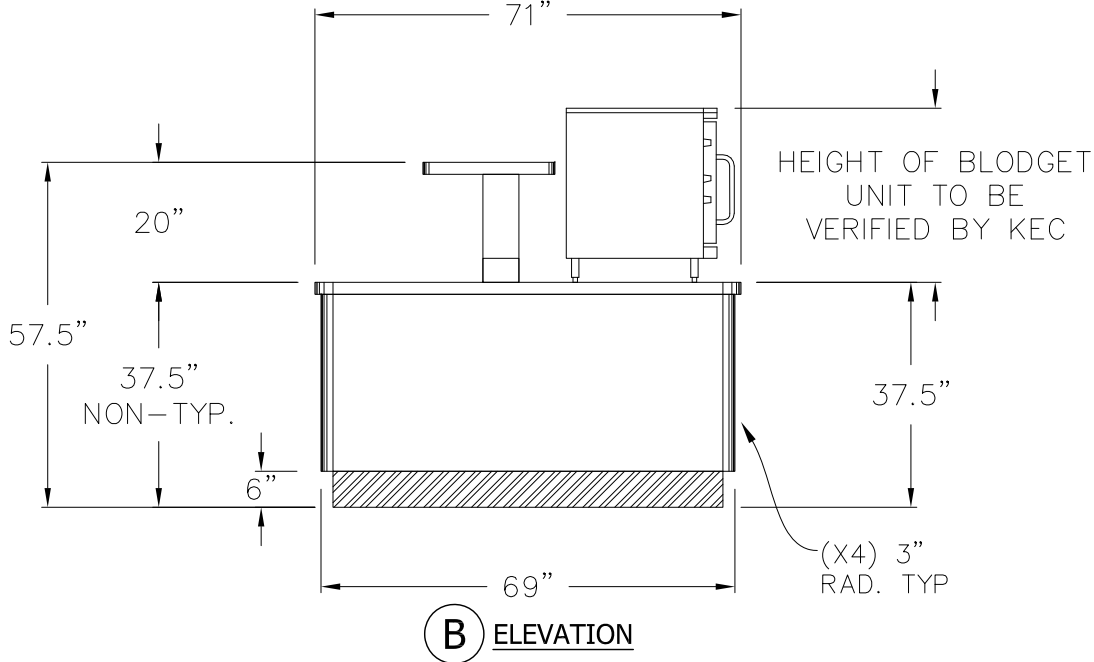
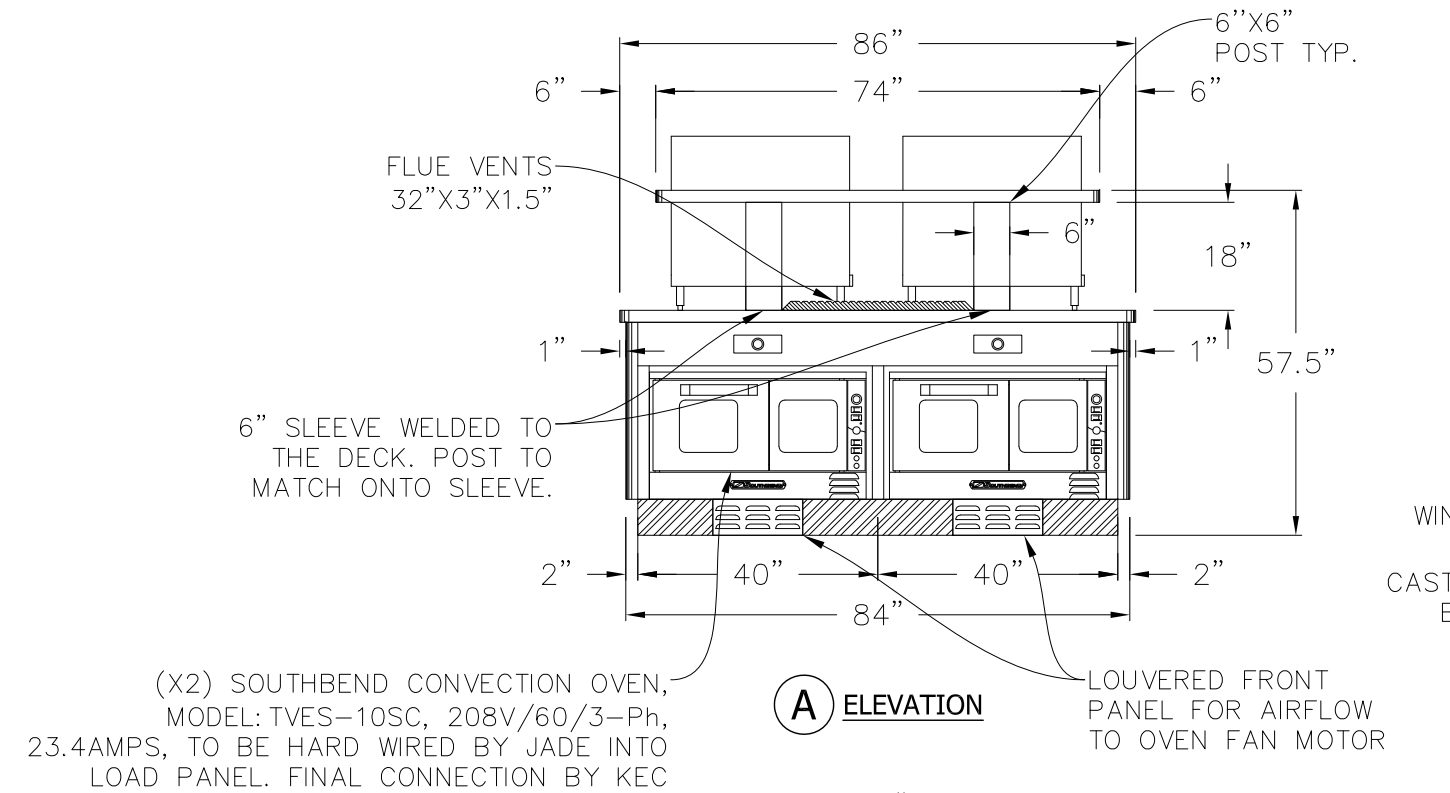
UNLESS OTHERWISE NOTED DIMENSIONS ARE IN INCHES AND TOLERANCES: .X±.125 .XX±.03 .XXX±.015. ANGLES ±1°			
MATERIAL	DRAWN	ECS	01.18.24
	CHECKED		
FINISH	APPROVED		

DESC		550 Fifth Suite-Safra	
FOR			
SIZE	DWG NO	24036G	
B			
SCALE 3/8" = 1'-0"		SHEET 5 OF 6	

THIS DRAWING IS THE PROPERTY OF JADE RANGE LLC NO PART OF THIS DOCUMENT MAY BE COPIED OR USED WITHOUT THE WRITTEN PERMISSION.

THIS DRAWING IS A CONCEPTUAL LAYOUT, SUBJECT TO CHANGES AS THE FINAL MANUFACTURING PARTS ARE CREATED.

REVISIONS					
REV	DESCRIPTION	ECN	BY	DATE	APPROVED
A	INITIAL DRAWING PER REQUEST	XXX	ECS	01.18.24	
B	REVISED DRAWING PER REQUEST	XXX	ECS	01.24.24	
C	REVISED DRAWING PER REQUEST	XXX	ECS	01.25.24	
D	REVISED DRAWING PER REQUEST	XXX	ECS	01.31.24	
E	REVISED DRAWING PER REQUEST	XXX	ECS	06.21.24	
F	REVISED DRAWING PER REQUEST	XXX	ECS	06.27.24	
G	REVISED DRAWING PER REQUEST	XXX	ECS	08.27.24	
CHANGES TO DRAWING MAY RESULT IN CHANGES TO DELIVERY DATE & COST					



MIN 6" CLEARANCE ABOVE FLUE PEDESTALS

GAS TYPE:	
ELEVATION:	
TO BE SPECIFIED BEFORE MFG.	

PROJECT MANAGER: SERGIO FORCATTO  
KURT EICKMEYER  
JOSHUA HORIKAWA

- 1. REGULATOR AND GAS CONNECTION
- ELECTRICAL CONNECTION
- DRAIN
- REFRIGERATION
- WATER
- 2. GAS SHUT-OFF VALVES AND CONNECTIONS SUPPLIED BY OTHERS.
- 3. ALL ELECTRICAL WORK (INSTALLATIONS AND CONNECTIONS) MUST BE PROVIDED BY OTHERS (BY CERTIFIED ELECTRICIAN)

JADE RANGE LLC  
2650 ORBITER ST.  
BREA, CA 92821  
-A MIDDLEBY CO.

UNLESS OTHERWISE NOTED DIMENSIONS ARE IN INCHES AND TOLERANCES: .X±.125 .XX±.03 .XXX±.015. ANGLES ±1°				DESC 550 Fifth Suite-Safra	
MATERIAL	DRAWN	ECS	01.18.24	FOR	
	CHECKED			SIZE DWG NO B 24036G	
FINISH	APPROVED			SCALE 3/8" = 1'-0" SHEET 6 OF 6	