

THIS DRAWING IS THE PROPERTY OF JADE RANGE LLC NO PART OF THIS DOCUMENT MAY BE COPIED OR USED WITHOUT THE WRITTEN PERMISSION.

THIS DRAWING IS A CONCEPTUAL LAYOUT, SUBJECT TO CHANGES AS THE FINAL MANUFACTURING PARTS ARE CREATED.

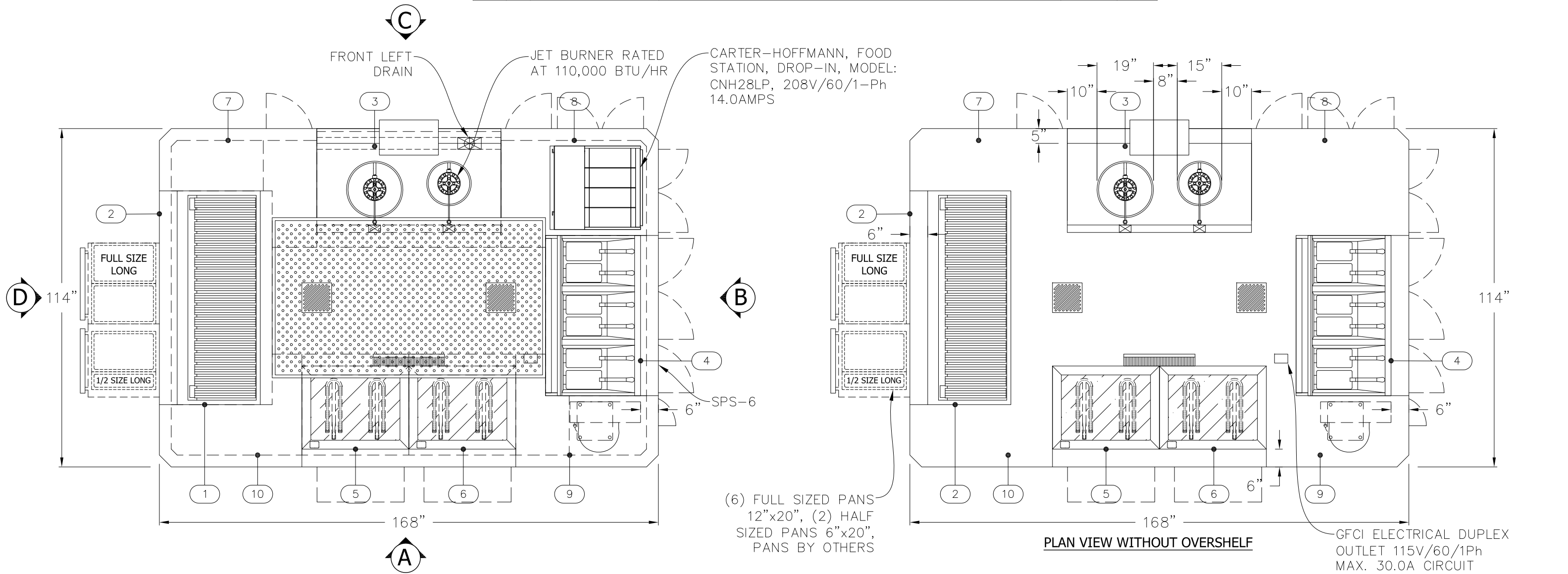
ALL GAS PRESSURE REGULATORS ARE SHIPPED LOOSE & WILL NEED TO BE INSTALLED BY CERTIFIED PLUMBER - LOCAL CODE PREVAILING

ITEM	QTY	MODEL #	DESCRIPTION	BTU/HR	AMP
1	1	JMRH-72B, SIG	TITAN 72", CHARBROILER, MODULAR	180,000	N/A
2	1	JRLH-04S-T-72	TITAN 72", SELF-CONTAINED, REFRIGERATED BASE 115V/60/1-Ph	N/A	12.6
3	1	JCR-2-14J18J-RWFG	TITAN CHINESE RANGE 14" WOK HOLE, 18" WOK HOLE, JET BURNERS, REAR WATER FRONT GUTER	220,000	N/A
4	1	JTFF-340-54, SIG	TITAN 54", TRIPLE TANK FRYER, CABINET BASE	366,000	N/A
5	1	JTRH-36IP-36, SIG	TITAN 36", PLANCHA TOP, OVEN BASE	70,000	N/A
6	1	JTRH-36IP-36, SIG	TITAN 36", PLANCHA TOP, OVEN BASE	70,000	N/A
7	1	CORNER CABINET	CUSTOM CABINET BASE	N/A	N/A
8	1	CORNER CABINET	CUSTOM CABINET BASE	N/A	N/A
	1	CNH28LP	CARTER-HOFFMANN, HOLD FRIED FOOD STATION, 208V/60/1-Ph	N/A	14.0
9	1	CORNER CABINET	CUSTOM CABINET BASE	N/A	N/A
	1	DUPLEX OUTLET	DUPLEX OUTLET RECEPTACLE 115V/60/1-Ph	N/A	30.0
10	1	CORNER CABINET	CUSTOM CABINET BASE	N/A	N/A

REVISIONS					
REV	DESCRIPTION	ECN	BY	DATE	APPROVED
A	INITIAL DRAWING PER REQUEST	XXX	ECS	11.20.20	
B	REVISED DRAWING PER REQUEST	XXX	ECS	08.05.22	
C	REVISED DRAWING PER REQUEST	XXX	ECS	08.16.22	
CHANGES TO DRAWING MAY RESULT IN CHANGES TO DELIVERY DATE & COST					

SIGNATURE PACKAGE

TOTAL BTU/HR: 906,000
TOTAL AMPS:(115V) 42.6A
TOTAL AMPS:(208V) 14.0A



MIN 6" CLEARANCE ABOVE FLUE PEDESTALS

GAS TYPE:	
ELEVATION:	
TO BE SPECIFIED BEFORE MFG.	

PROJECT MANAGER: SERGIO FORCATTO

- 1. REGULATOR AND GAS CONNECTION
- ELECTRICAL CONNECTION
- DRAIN
- REFRIGERATION
- WATER
- 2. GAS SHUT-OFF VALVES AND CONNECTIONS SUPPLIED BY OTHERS.
- 3. ALL ELECTRICAL WORK (INSTALLATIONS AND CONNECTIONS) MUST BE PROVIDED BY OTHERS (BY CERTIFIED ELECTRICIAN)

JADE
JADE RANGE LLC
2650 ORBITER ST.
BREA, CA 92821
-A MIDDLEBY CO.

UNLESS OTHERWISE NOTED DIMENSIONS ARE IN INCHES AND TOLERANCES: .X±.125 .XX±.03 .XXX±.015. ANGLES ±1°

MATERIAL	DRAWN	ECS	11.20.20
FINISH	CHECKED		
	APPROVED		

DESC	University of Nebraska - Stadium Expansion			
FOR				
SIZE	DWG NO	20272C		
B	SCALE	3/8" = 1'-0"	SHEET	1 OF 8

THIS DRAWING IS THE PROPERTY OF JADE RANGE LLC NO PART OF THIS DOCUMENT MAY BE COPIED OR USED WITHOUT THE WRITTEN PERMISSION.

THIS DRAWING IS A CONCEPTUAL LAYOUT, SUBJECT TO CHANGES AS THE FINAL MANUFACTURING PARTS ARE CREATED.

REVISIONS					
REV	DESCRIPTION	ECN	BY	DATE	APPROVED
A	INITIAL DRAWING PER REQUEST	XXX	ECS	11.20.20	
B	REVISED DRAWING PER REQUEST	XXX	ECS	08.05.22	
C	REVISED DRAWING PER REQUEST	XXX	ECS	08.16.22	
CHANGES TO DRAWING MAY RESULT IN CHANGES TO DELIVERY DATE & COST					


NOTES:


- All electrical wires, conduit and pig tails are provided by Jade and are long enough to reach the main load panel, which is also provided by Jade. The connection of the wires, conduit and pigtails, which are provided by Jade, from each component to the load panel is to be completed by the KEC or contract electrician. The KEC or contract electrician is to make the final connection from the load panel to the incoming main line.
- All gas manifolds and connection of the gas manifolds in between each unit are provided by Jade. Those connections to the main manifold from each Jade unit is to be completed by the KEC or plumbing contractor. The KEC or plumbing contractor is to make the final connection from the main manifold to the gas pressure regulator located in the specified location per drawing and then to make the connections to the main incoming gas line.
- All convenience outlets to be commercial grade GFCI breakers and outlets.
- All water connections and drain connections are to be completed by the KEC or contract plumber. Jade provides no water or drain connections, only fixtures and devices that require water and / or drains. The KEC or contract plumber is to complete all the water lines to each water connection and each drain connection to the appropriate floor sink/drain.
- All units ship assembled unless otherwise specified. Jade Range ships salamanders and cheesemelters range mounted and line-ups & suites ship in as large of sections as possible for easier assembly onsite at the time of install.

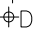
MIN 6” CLEARANCE
ABOVE FLUE PEDESTALS


GAS TYPE:	
ELEVATION:	
TO BE SPECIFIED BEFORE MFG.	


PROJECT MANAGER: SERGIO FORCATTO

1.  REGULATOR AND GAS CONNECTION

 ELECTRICAL CONNECTION

 DRAIN

 REFRIGERATION

 WATER
2. GAS SHUT-OFF VALVES AND CONNECTIONS SUPPLIED BY OTHERS.

3. ALL ELECTRICAL WORK (INSTALLATIONS AND CONNECTIONS)
MUST BE PROVIDED BY OTHERS (BY CERTIFIED ELECTRICIAN)



JADE
JADE RANGE LLC
2650 ORBITER ST.
BREA, CA 92821
-A MIDDLEBY CO.

UNLESS OTHERWISE NOTED DIMENSIONS ARE IN INCHES AND TOLERANCES: .X±.125 .XX±.03 .XXX±.015. ANGLES ±1°			
MATERIAL	DRAWN	ECS	11.20.20
	CHECKED		
FINISH	APPROVED		

DESC		University of Nebraska - Stadium Expansion	
FOR			
SIZE	DWG NO	20272C	
B			
SCALE	3/8" = 1'-0"	SHEET	2 OF 8

THIS DRAWING IS THE PROPERTY OF JADE RANGE LLC NO PART OF THIS DOCUMENT MAY BE COPIED OR USED WITHOUT THE WRITTEN PERMISSION.

THIS DRAWING IS A CONCEPTUAL LAYOUT, SUBJECT TO CHANGES AS THE FINAL MANUFACTURING PARTS ARE CREATED.



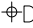


REVISIONS					
REV	DESCRIPTION	ECN	BY	DATE	APPROVED
A	INITIAL DRAWING PER REQUEST	XXX	ECS	11.20.20	
B	REVISED DRAWING PER REQUEST	XXX	ECS	08.05.22	
C	REVISED DRAWING PER REQUEST	XXX	ECS	08.16.22	
CHANGES TO DRAWING MAY RESULT IN CHANGES TO DELIVERY DATE & COST					

ADD LOAD PANEL
SCHEDULE HERE

MIN 6” CLEARANCE
ABOVE FLUE PEDESTALS

GAS TYPE:	
ELEVATION:	
TO BE SPECIFIED BEFORE MFG.	

PROJECT MANAGER: SERGIO FORCATTO

1.  REGULATOR AND GAS CONNECTION
-  ELECTRICAL CONNECTION
-  DRAIN
-  REFRIGERATION
-  WATER
2. GAS SHUT-OFF VALVES AND CONNECTIONS SUPPLIED BY OTHERS.
3. ALL ELECTRICAL WORK (INSTALLATIONS AND CONNECTIONS) MUST BE PROVIDED BY OTHERS (BY CERTIFIED ELECTRICIAN)



JADE RANGE LLC
2650 ORBITER ST.
BREA, CA 92821
-A MIDDLEBY CO.

UNLESS OTHERWISE NOTED DIMENSIONS ARE IN INCHES AND TOLERANCES: .X±.125 .XX±.03 .XXX±.015. ANGLES ±1°

MATERIAL	DRAWN	ECS	11.20.20
	CHECKED		
FINISH	APPROVED		

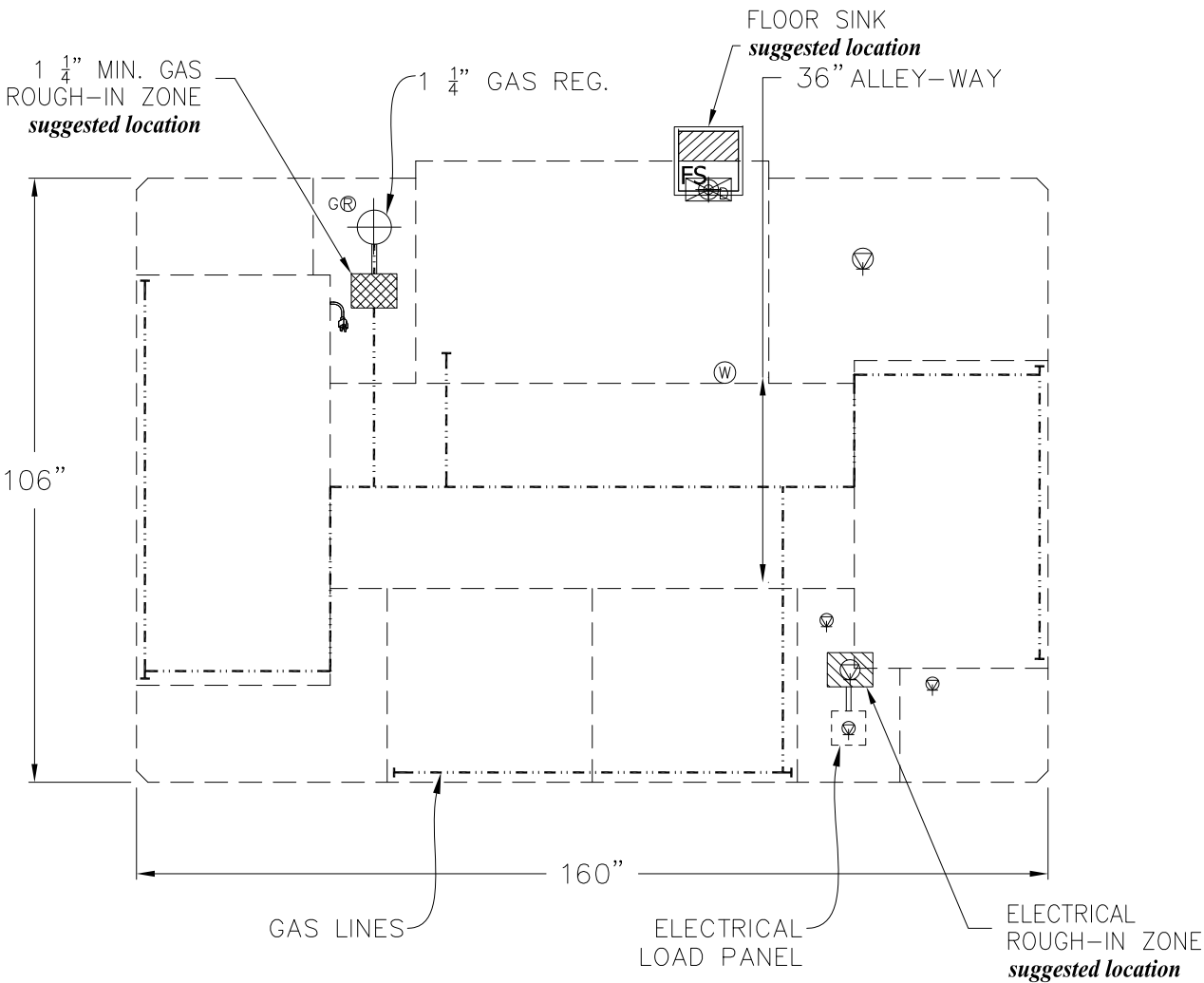
DESC		University of Nebraska - Stadium Expansion	
FOR			
SIZE	DWG NO	20272C	
B			
SCALE	3/8" = 1'-0"	SHEET	3 OF 8

THIS DRAWING IS THE PROPERTY OF JADE RANGE LLC. NO PART OF THIS DOCUMENT MAY BE COPIED OR USED WITHOUT THE WRITTEN PERMISSION.

THIS DRAWING IS A CONCEPTUAL LAYOUT, SUBJECT TO CHANGES AS THE FINAL MANUFACTURING PARTS ARE CREATED.

THIS DRAWING IS A CONCEPTUAL LAYOUT, SUBJECT TO CHANGES
AS THE FINAL MANUFACTURING PARTS ARE CREATED.

REVISIONS						
REV	DESCRIPTION	ECN	BY	DATE	APPROVED	
A	INITIAL DRAWING PER REQUEST	XXX	ECS	11.20.20		
B	REVISED DRAWING PER REQUEST	XXX	ECS	08.05.22		
C	REVISED DRAWING PER REQUEST	XXX	ECS	08.16.22		
CHANGES TO DRAWING MAY RESULT IN CHANGES TO DELIVERY DATE & COST						








EQUIPMET BODY PERIMETER DETAIL

MIN 6" CLEARANCE
ABOVE FLUE PEDESTALS

GAS TYPE:	
ELEVATION:	
TO BE SPECIFIED BEFORE MFG.	

PROJECT MANAGER: SERGIO FORCATTO

1.  REGULATOR AND GAS CONNECTION
 ELECTRICAL CONNECTION
 DRAIN
 REFRIGERATION
 WATER
2. GAS SHUT-OFF VALVES AND CONNECTIONS SUPPLIED BY OTHERS.
3. ALL ELECTRICAL WORK (INSTALLATIONS AND CONNECTIONS)
 MUST BE PROVIDED BY OTHERS (BY CERTIFIED ELECTRICIAN)



JADE RANGE LLC
2650 ORBITER ST.
BREA, CA 92821
-A MIDDLEBY CO.

UNLESS OTHERWISE NOTED DIMENSIONS ARE IN INCHES
AND TOLERANCES: .X \pm .125 .XX \pm .03 .XXX \pm .015. ANGLES \pm 1°

MATERIAL	DRAWN	ECS	11.20.20
	CHECKED		
FINISH	APPROVED		

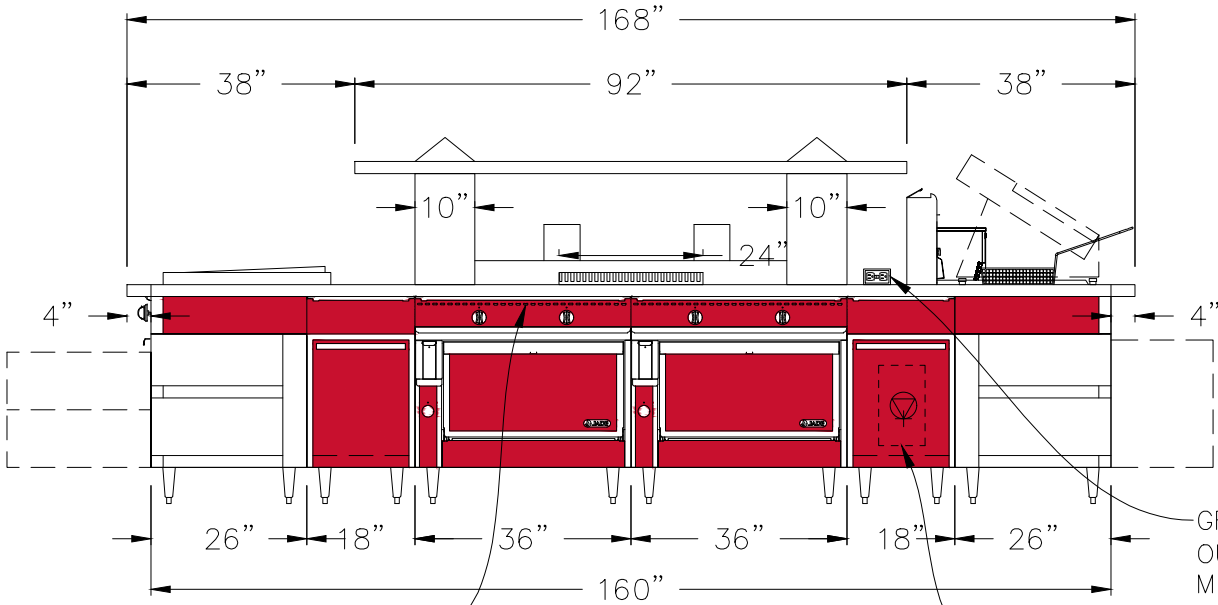
DESC University of Nebraska -
Stadium Expansion

FOR	
SIZE B	DWG NO 20272C
SCALE 3/8" = 1'-0"	SHEET 4 OF 8

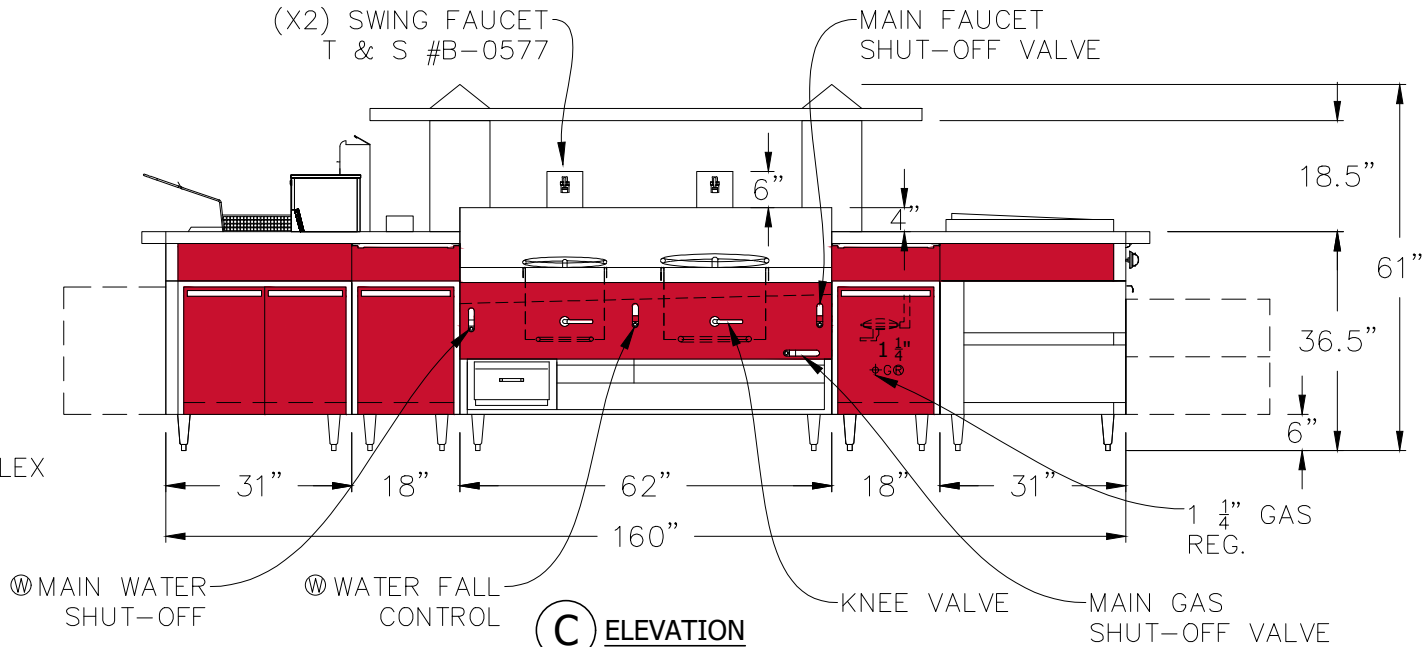
THIS DRAWING IS THE PROPERTY OF JADE RANGE LLC NO PART OF THIS DOCUMENT MAY BE COPIED OR USED WITHOUT THE WRITTEN PERMISSION.

THIS DRAWING IS A CONCEPTUAL LAYOUT, SUBJECT TO CHANGES AS THE FINAL MANUFACTURING PARTS ARE CREATED.

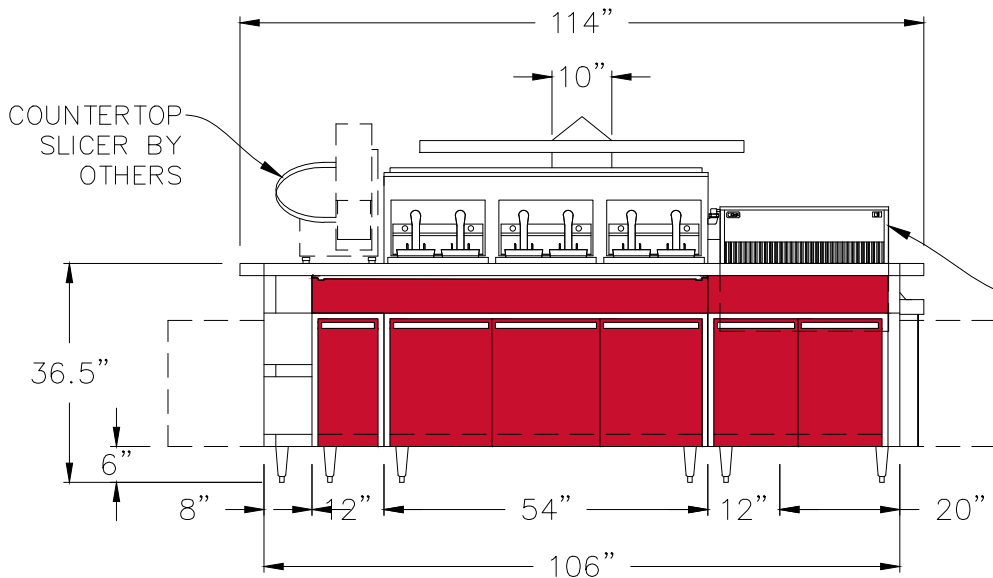
REVISIONS					
REV	DESCRIPTION	ECN	BY	DATE	APPROVED
A	INITIAL DRAWING PER REQUEST	XXX	ECS	11.20.20	
B	REVISED DRAWING PER REQUEST	XXX	ECS	08.05.22	
C	REVISED DRAWING PER REQUEST	XXX	ECS	08.16.22	
CHANGES TO DRAWING MAY RESULT IN CHANGES TO DELIVERY DATE & COST					



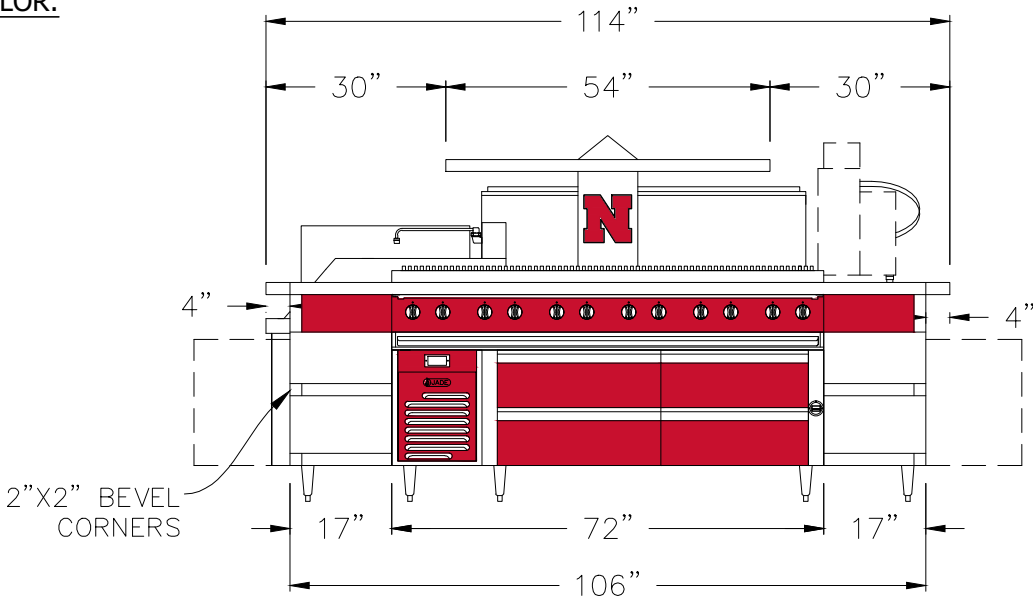
A ELEVATION



C ELEVATION



B ELEVATION



D ELEVATION

CUSTOM POWDER COAT COLOR:
RED COLOR
RGB: 200 16 46
HEX: #C8102E
LRV: 14.54%

MIN 6" CLEARANCE
ABOVE FLUE PEDESTALS

GAS TYPE:	
ELEVATION:	
TO BE SPECIFIED BEFORE MFG.	

PROJECT MANAGER: SERGIO FORCATTO

- 1. REGULATOR AND GAS CONNECTION
- 2. ELECTRICAL CONNECTION
- 3. DRAIN
- 4. REFRIGERATION
- 5. WATER
- 6. GAS SHUT-OFF VALVES AND CONNECTIONS SUPPLIED BY OTHERS.
- 7. ALL ELECTRICAL WORK (INSTALLATIONS AND CONNECTIONS) MUST BE PROVIDED BY OTHERS (BY CERTIFIED ELECTRICIAN)



UNLESS OTHERWISE NOTED DIMENSIONS ARE IN INCHES
AND TOLERANCES: .X±.125 .XX±.03 .XXX±.015. ANGLES ±1°

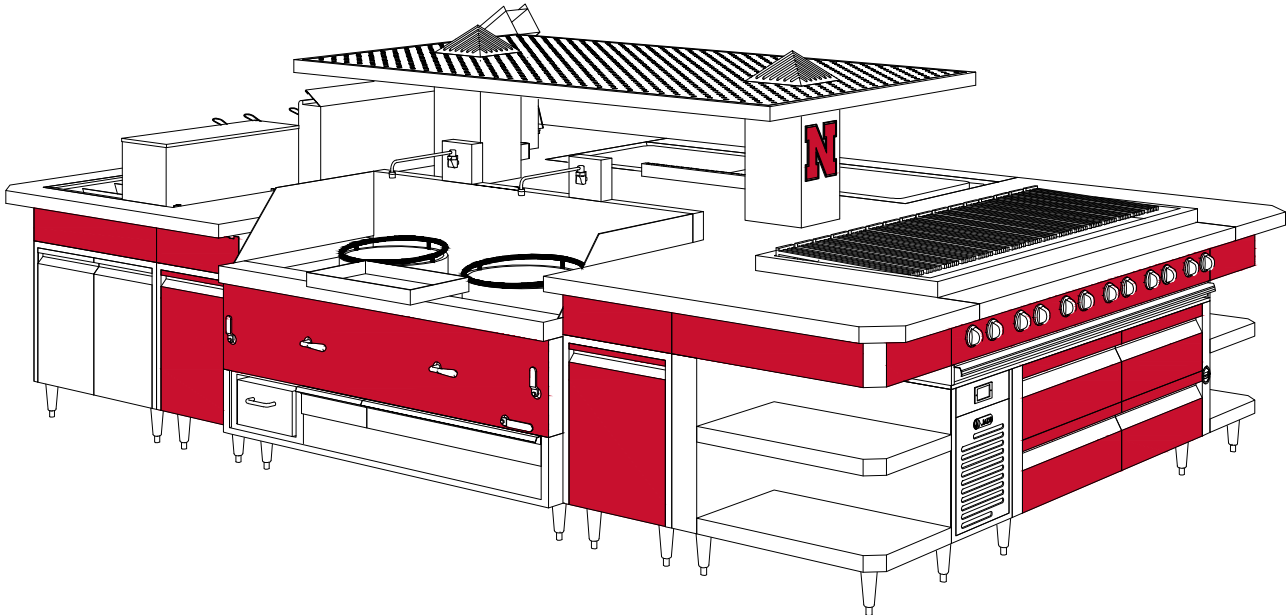
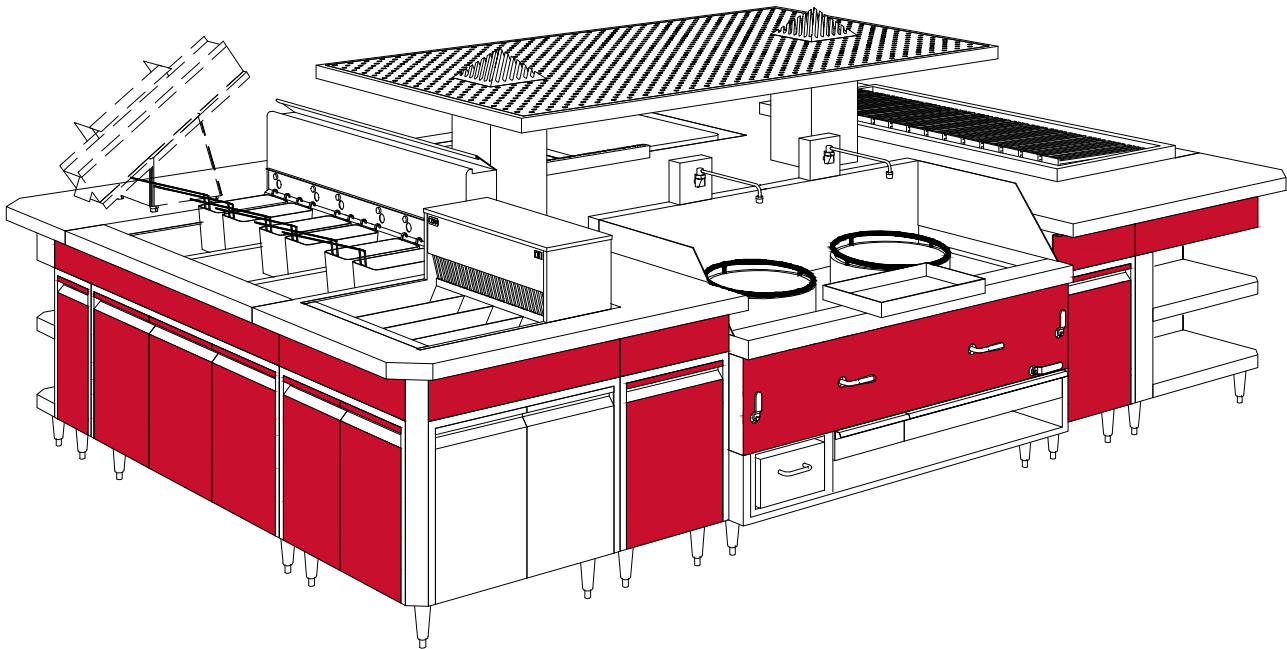
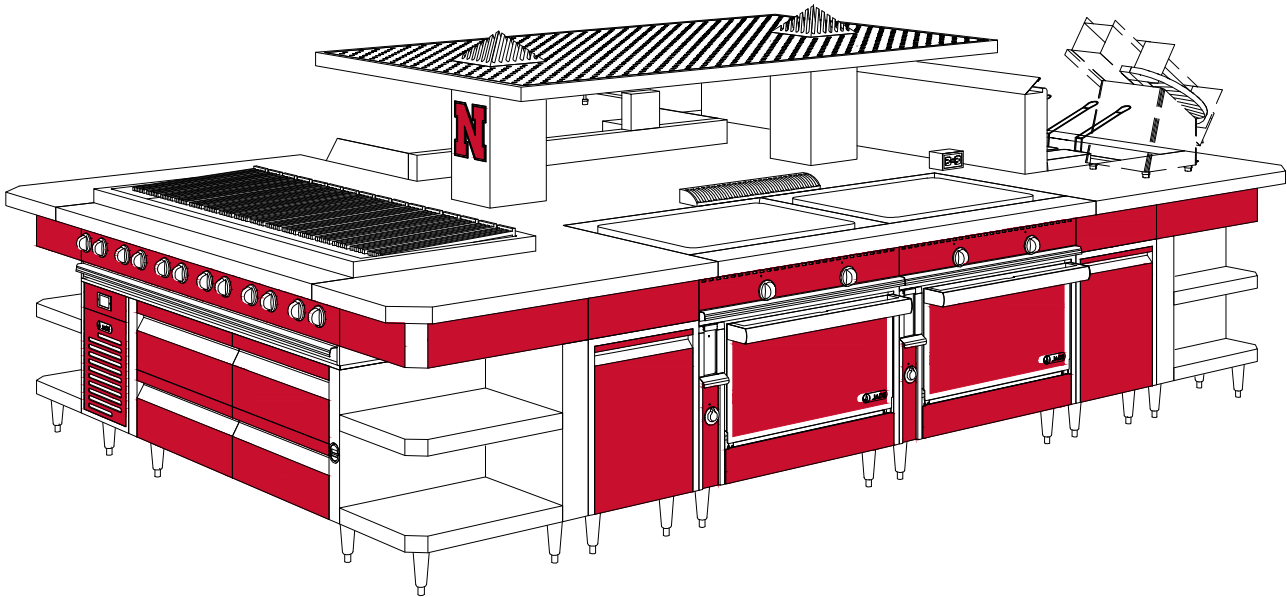
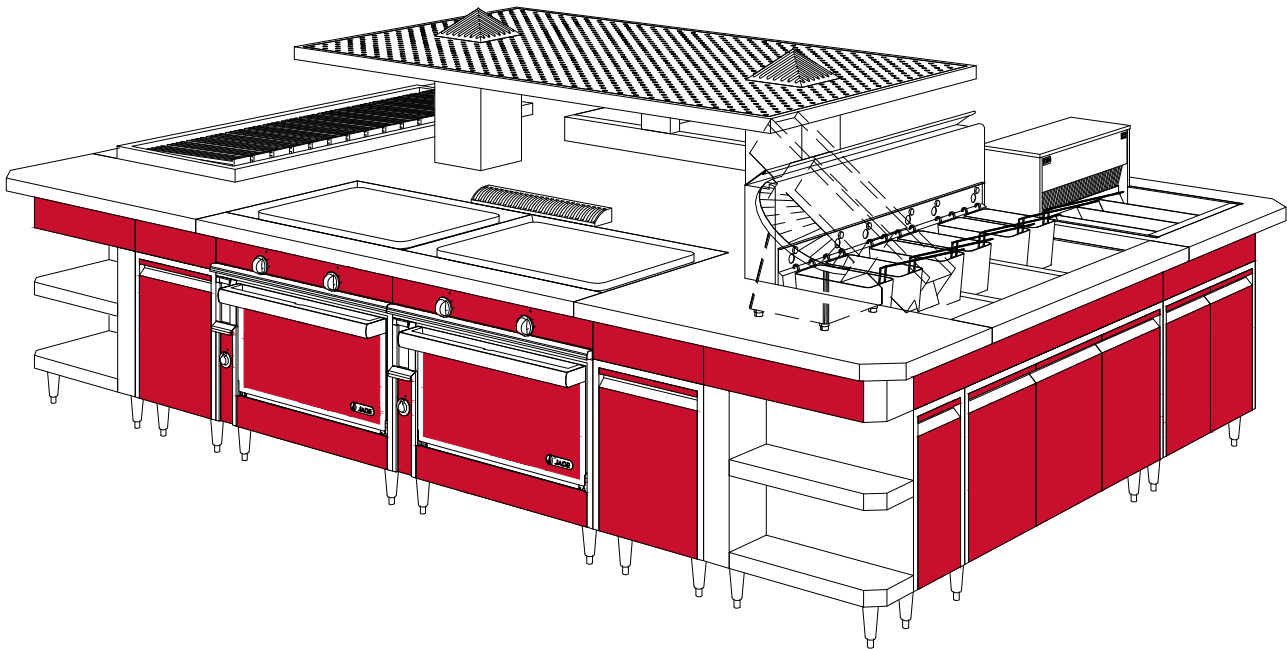
MATERIAL	DRAWN	ECS	11.20.20
FINISH	CHECKED		
	APPROVED		

DESC		University of Nebraska - Stadium Expansion	
FOR		SIZE DWG NO	
SCALE		3/8" = 1'-0"	
SHEET		5 OF 8	

THIS DRAWING IS THE PROPERTY OF JADE RANGE LLC NO PART OF THIS DOCUMENT MAY BE COPIED OR USED WITHOUT THE WRITTEN PERMISSION.

THIS DRAWING IS A CONCEPTUAL LAYOUT, SUBJECT TO CHANGES AS THE FINAL MANUFACTURING PARTS ARE CREATED.

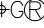

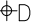


REVISIONS					
REV	DESCRIPTION	ECN	BY	DATE	APPROVED
A	INITIAL DRAWING PER REQUEST	XXX	ECS	11.20.20	
B	REVISED DRAWING PER REQUEST	XXX	ECS	08.05.22	
C	REVISED DRAWING PER REQUEST	XXX	ECS	08.16.22	
CHANGES TO DRAWING MAY RESULT IN CHANGES TO DELIVERY DATE & COST					



MIN 6" CLEARANCE
ABOVE FLUE PEDESTALS

GAS TYPE:	
ELEVATION:	
TO BE SPECIFIED BEFORE MFG.	

PROJECT MANAGER: SERGIO FORCATTO

- 1.  REGULATOR AND GAS CONNECTION
-  ELECTRICAL CONNECTION
-  DRAIN
-  REFRIGERATION
-  WATER
- 2. GAS SHUT-OFF VALVES AND CONNECTIONS SUPPLIED BY OTHERS.
- 3. ALL ELECTRICAL WORK (INSTALLATIONS AND CONNECTIONS) MUST BE PROVIDED BY OTHERS (BY CERTIFIED ELECTRICIAN)



JADE
JADE RANGE LLC
2650 ORBITER ST.
BREA, CA 92821
-A MIDDLEBY CO.

UNLESS OTHERWISE NOTED DIMENSIONS ARE IN INCHES
AND TOLERANCES: .X±.125 .XX±.03 .XXX±.015. ANGLES ±1°

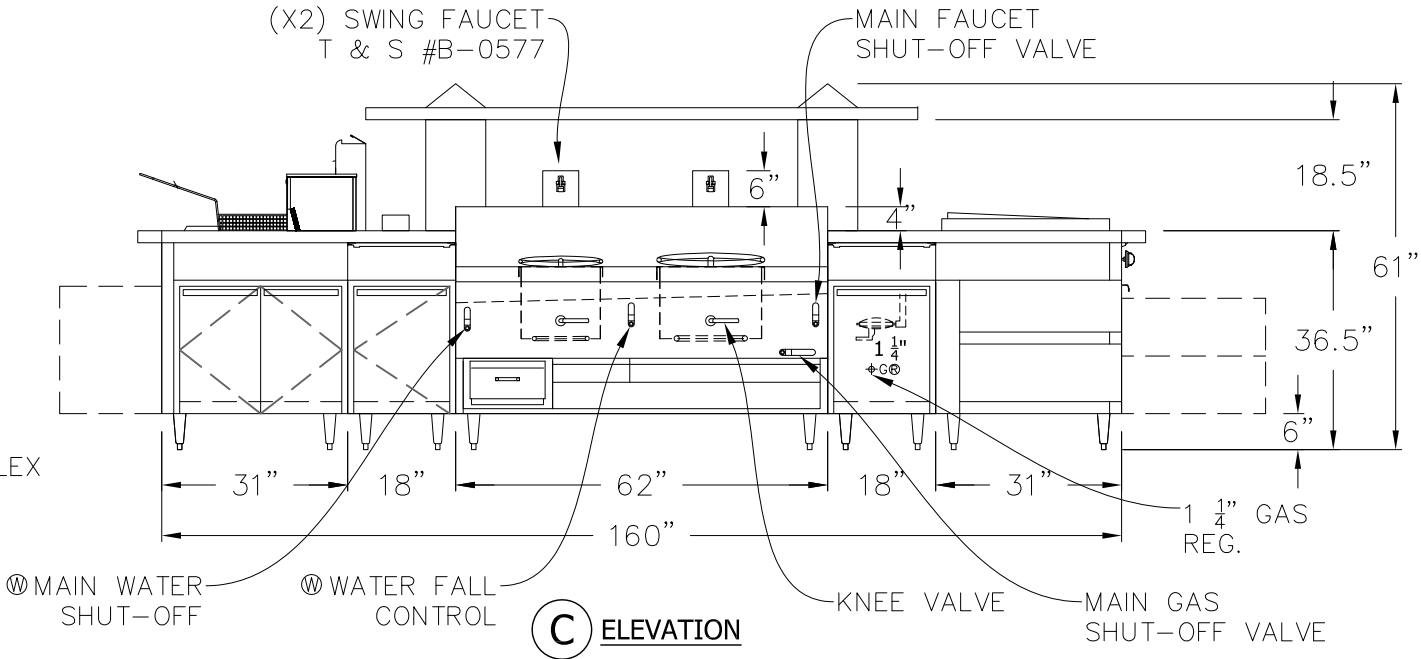
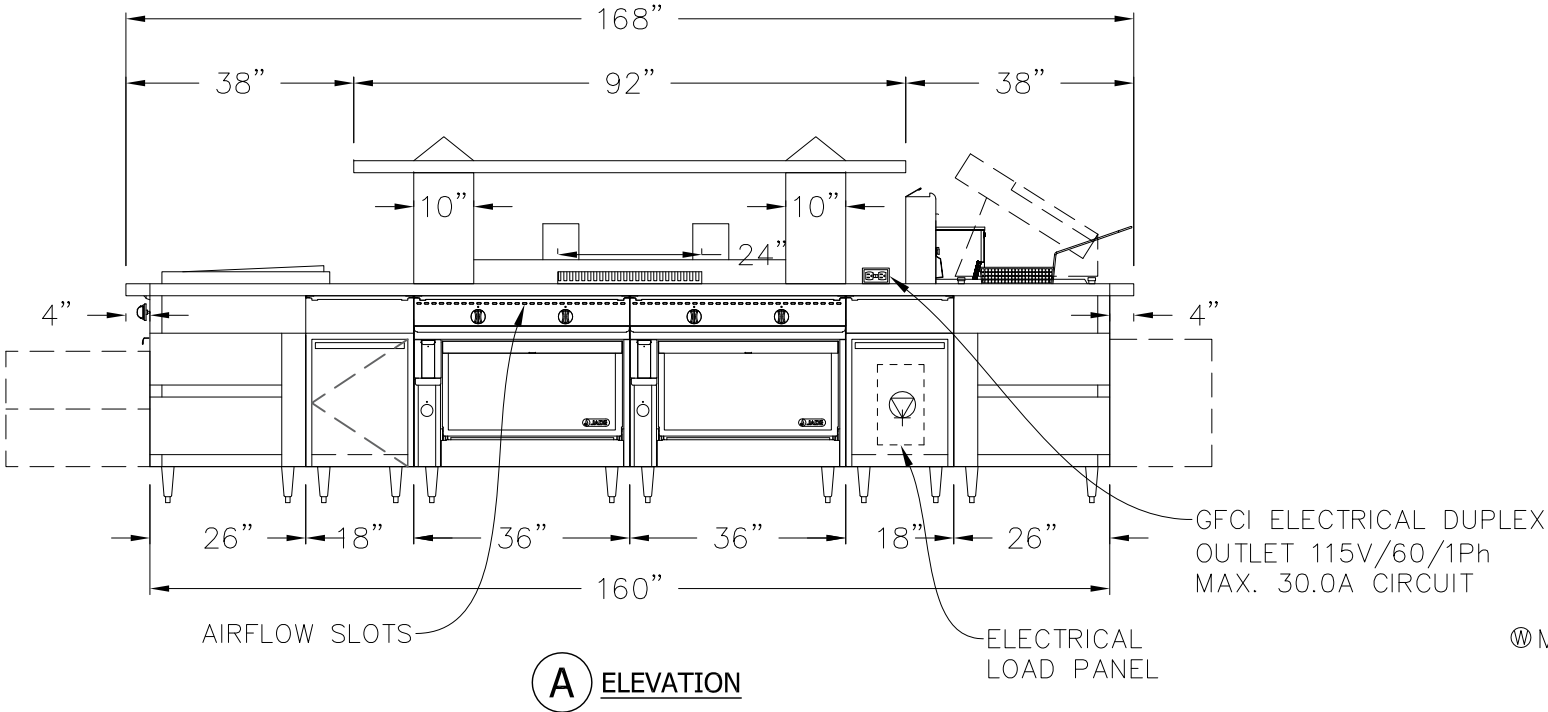
MATERIAL	DRAWN	ECS	11.20.20
FINISH	CHECKED		
	APPROVED		

DESC		University of Nebraska - Stadium Expansion	
FOR	SIZE	DWG NO	
	B	20272C	
SCALE	NTS	SHEET	6 OF 8

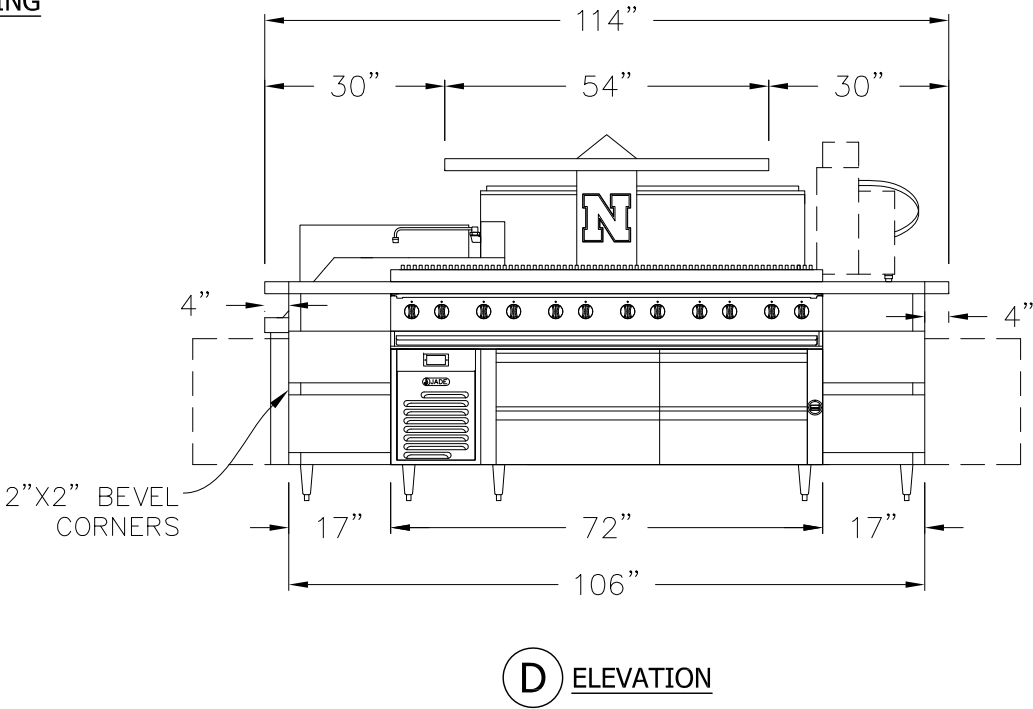
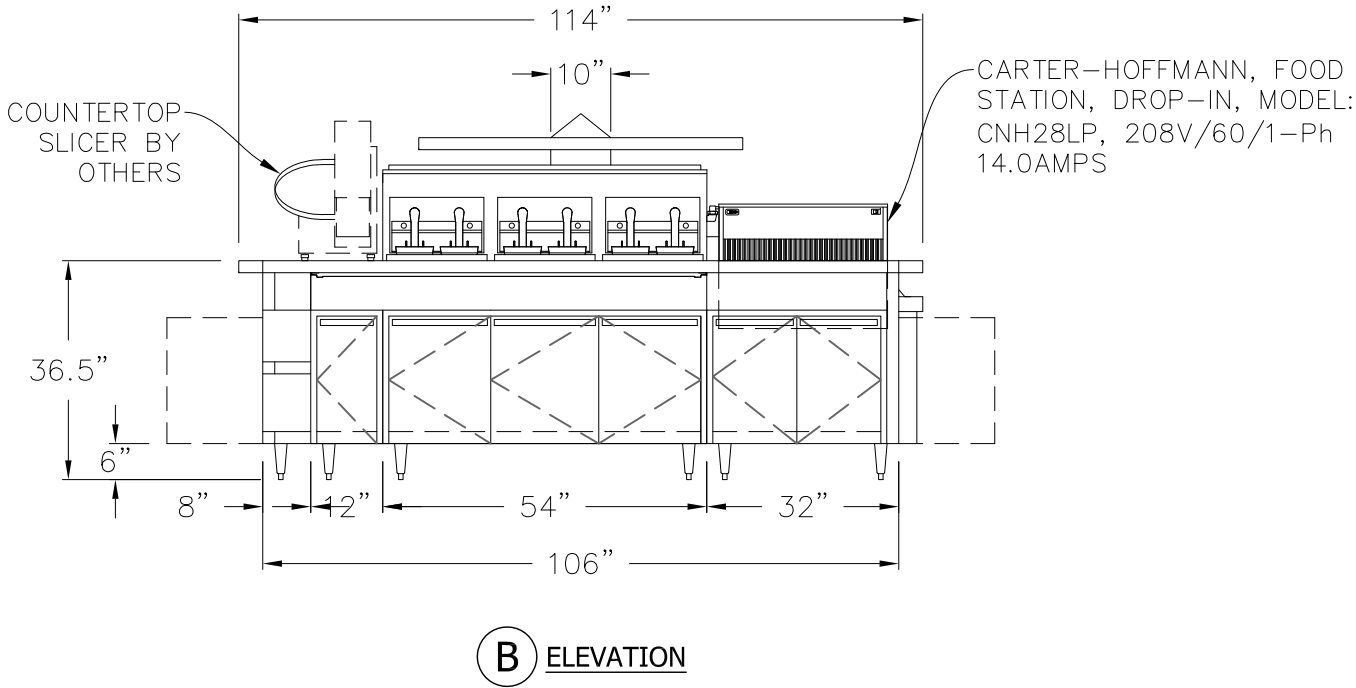
THIS DRAWING IS THE PROPERTY OF JADE RANGE LLC NO PART OF THIS DOCUMENT MAY BE COPIED OR USED WITHOUT THE WRITTEN PERMISSION.

THIS DRAWING IS A CONCEPTUAL LAYOUT, SUBJECT TO CHANGES AS THE FINAL MANUFACTURING PARTS ARE CREATED.

REVISIONS					
REV	DESCRIPTION	ECN	BY	DATE	APPROVED
A	INITIAL DRAWING PER REQUEST	XXX	ECS	11.20.20	
B	REVISED DRAWING PER REQUEST	XXX	ECS	08.05.22	
C	REVISED DRAWING PER REQUEST	XXX	ECS	08.16.22	
CHANGES TO DRAWING MAY RESULT IN CHANGES TO DELIVERY DATE & COST					



NO POWDER COAT COLORING



MIN 6" CLEARANCE
ABOVE FLUE PEDESTALS

GAS TYPE:	
ELEVATION:	
TO BE SPECIFIED BEFORE MFG.	

PROJECT MANAGER: SERGIO FORCATTO

1. Ⓜ Ⓜ REGULATOR AND GAS CONNECTION
- Ⓜ ELECTRICAL CONNECTION
- Ⓜ DRAIN
- Ⓜ REFRIGERATION
- Ⓜ WATER
2. GAS SHUT-OFF VALVES AND CONNECTIONS SUPPLIED BY OTHERS.
3. ALL ELECTRICAL WORK (INSTALLATIONS AND CONNECTIONS) MUST BE PROVIDED BY OTHERS (BY CERTIFIED ELECTRICIAN)



UNLESS OTHERWISE NOTED DIMENSIONS ARE IN INCHES AND TOLERANCES: .X±.125 .XX±.03 .XXX±.015. ANGLES ±1°

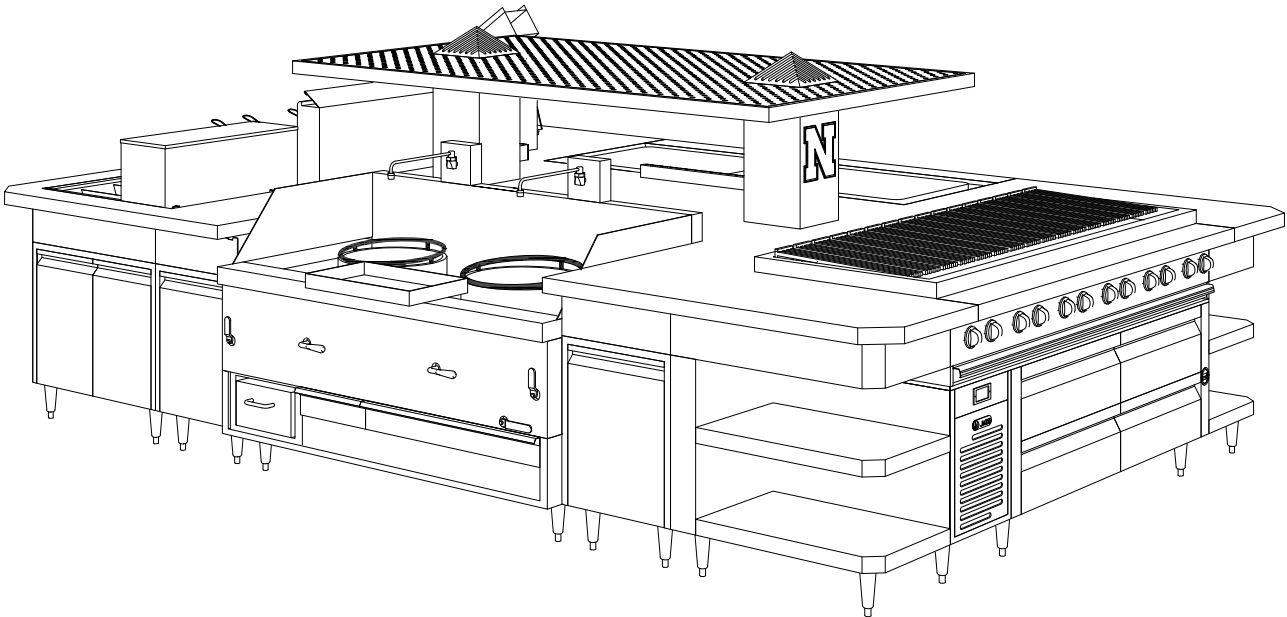
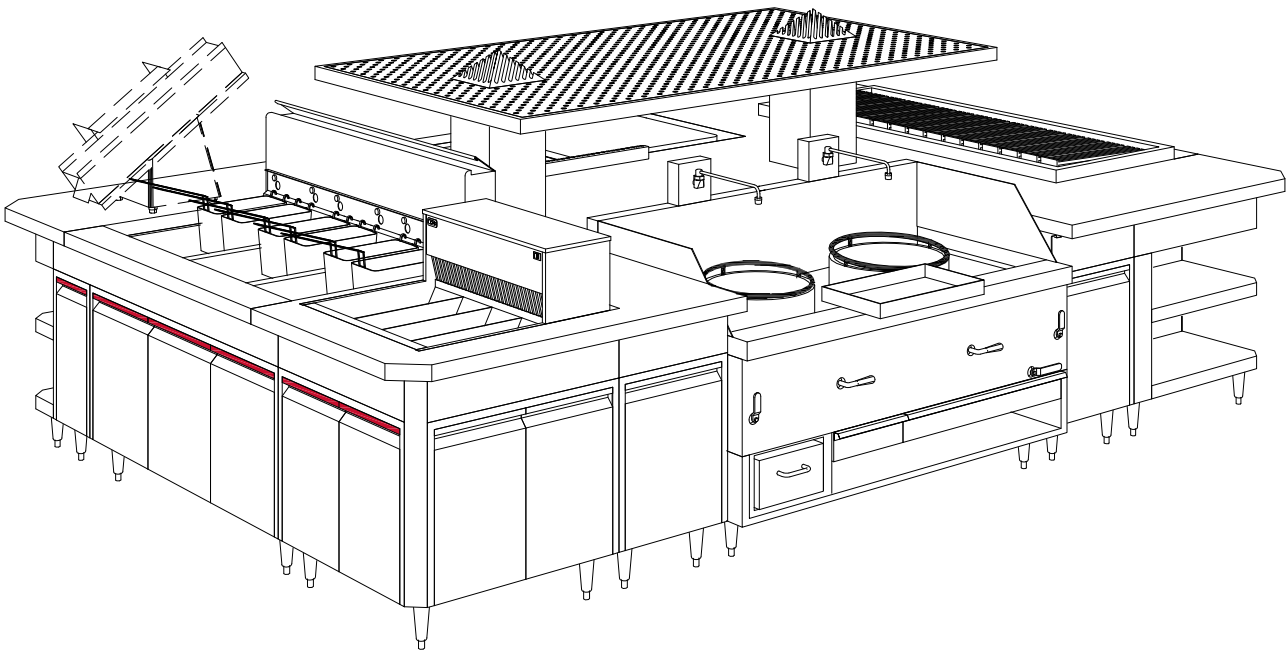
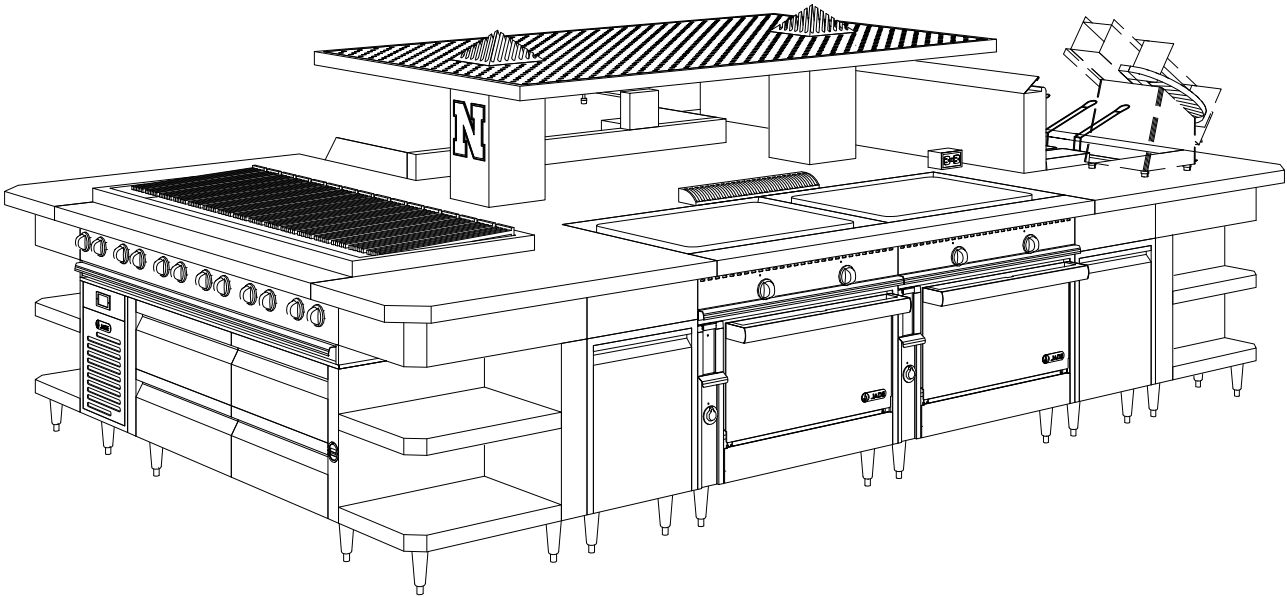
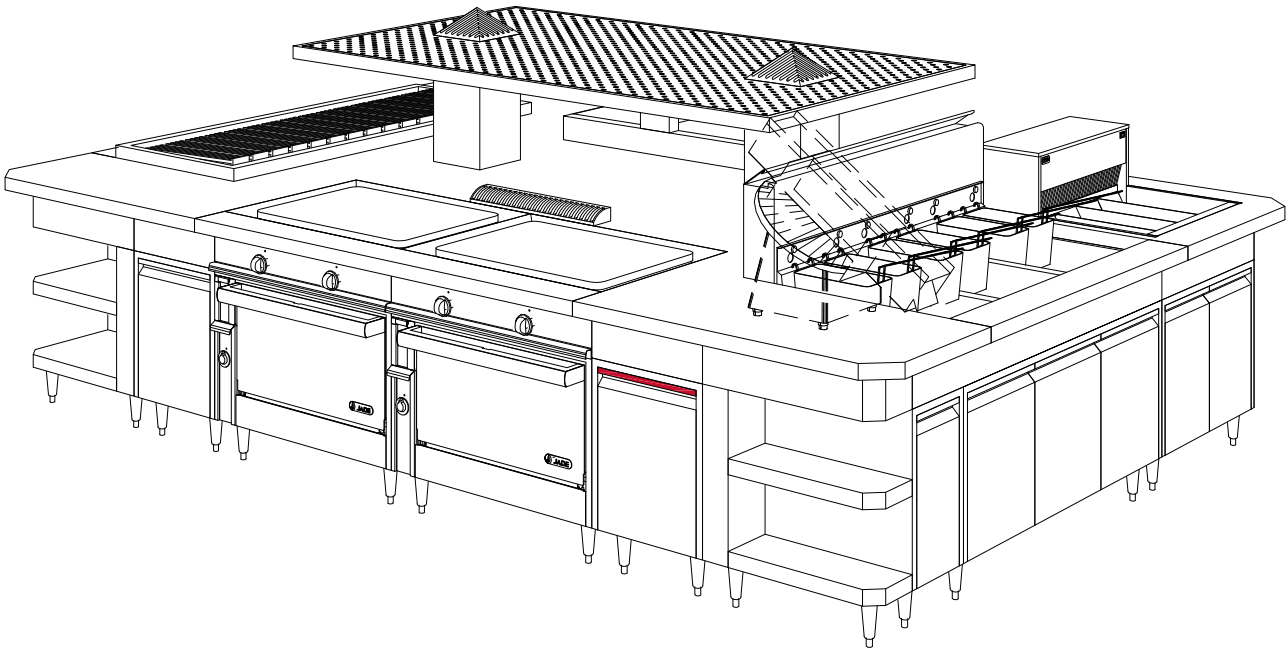
MATERIAL	DRAWN	ECS	11.20.20
FINISH	CHECKED		
	APPROVED		

DESC		University of Nebraska - Stadium Expansion	
FOR		DWG NO	
SIZE		20272C	
SCALE		3/8" = 1'-0"	
SHEET		7 OF 8	

THIS DRAWING IS THE PROPERTY OF JADE RANGE LLC NO PART OF THIS DOCUMENT MAY BE COPIED OR USED WITHOUT THE WRITTEN PERMISSION.

THIS DRAWING IS A CONCEPTUAL LAYOUT, SUBJECT TO CHANGES AS THE FINAL MANUFACTURING PARTS ARE CREATED.

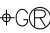
REVISIONS					
REV	DESCRIPTION	ECN	BY	DATE	APPROVED
A	INITIAL DRAWING PER REQUEST	XXX	ECS	11.20.20	
B	REVISED DRAWING PER REQUEST	XXX	ECS	08.05.22	
C	REVISED DRAWING PER REQUEST	XXX	ECS	08.16.22	
CHANGES TO DRAWING MAY RESULT IN CHANGES TO DELIVERY DATE & COST					





MIN 6" CLEARANCE
ABOVE FLUE PEDESTALS


GAS TYPE:	
ELEVATION:	
TO BE SPECIFIED BEFORE MFG.	


PROJECT MANAGER: SERGIO FORCATTO

1.  REGULATOR AND GAS CONNECTION

 ELECTRICAL CONNECTION

 DRAIN

 REFRIGERATION

 WATER

2. GAS SHUT-OFF VALVES AND CONNECTIONS SUPPLIED BY OTHERS.

3. ALL ELECTRICAL WORK (INSTALLATIONS AND CONNECTIONS)
MUST BE PROVIDED BY OTHERS (BY CERTIFIED ELECTRICIAN)



JADE
JADE RANGE LLC
2650 ORBITER ST.
BREA, CA 92821
-A MIDDLEBY CO.

UNLESS OTHERWISE NOTED DIMENSIONS ARE IN INCHES
AND TOLERANCES: .X±.125 .XX±.03 .XXX±.015. ANGLES ±1°

MATERIAL	DRAWN	ECS	11.20.20
FINISH	CHECKED		
	APPROVED		

DESC		University of Nebraska - Stadium Expansion	
FOR		DWG NO	
SIZE		20272C	
SCALE		NTS	
SHEET		8 OF 8	